



# SDR4P COMPACT PISTOL DRILL

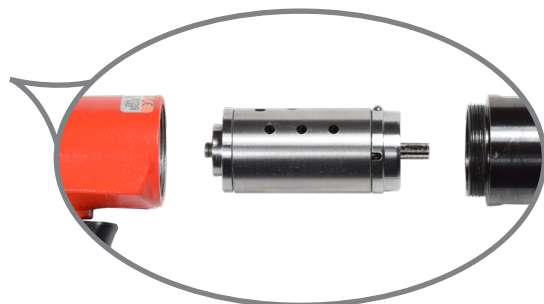
## 0.4 hp Compact Drill



SDR4P

### NEW for 2018 - SDR4P Series:

- 0.4 HP – High Power to Weight Ratio
- Precision Spindle & Chuck:  $\pm 0.0025$  Runout
- 3 Planet Gear-Set – Longer Life
- Ergonomic Features:
  - Integrated Finger Rest
  - Contoured 3-Finger Grip
  - Low Noise – 78 dBA
- Drop-In Motors – Ease of Service



# SDR4P COMPACT PISTOL DRILL



**AVAILABLE  
IN REVERSING!**

Model Number	Chuck Capacity		Free Speed rpm	Weight		Length		Side To Center		Maximum Air Consumption		Spindle Thread
	in	mm		lb	kg	in	mm	in	mm	cfm	l/s	
<b>0.4 hp (0.30 kW) – Non-Reversible Keyed Chuck</b>												
SDR4P5N2	1/4	6	500	1.7	0.8	6.1	155	0.7	17	20	10	3/8"-24
SDR4P8N2	1/4	6	800	1.7	0.8	6.1	155	0.7	17	20	10	3/8"-24
SDR4P12N2	1/4	6	1200	1.7	0.8	6.1	155	0.7	17	20	10	3/8"-24
SDR4P22N2	1/4	6	2200	1.6	0.7	5.5	140	0.7	17	20	10	3/8"-24
SDR4P26N2	1/4	6	2600	1.6	0.7	5.5	140	0.7	17	20	10	3/8"-24
SDR4P30N2	1/4	6	3000	1.6	0.7	5.5	140	0.7	17	20	10	3/8"-24
SDR4P36N2	1/4	6	3600	1.6	0.7	5.5	140	0.7	17	20	10	3/8"-24
SDR4P43N2	1/4	6	4300	1.6	0.7	5.5	140	0.7	17	20	10	3/8"-24
SDR4P50N2	1/4	6	5000	1.6	0.7	5.5	140	0.7	17	20	10	3/8"-24
SDR4P60N2	1/4	6	6000	1.6	0.7	5.5	140	0.7	17	20	10	3/8"-24
<b>0.4 hp (0.30 kW) – Reversible Keyed Chuck</b>												
SDR4P3R2	1/4	6	300	1.8	0.8	6.4	165	0.7	17	20	10	3/8"-24
SDR4P5R2	1/4	6	500	1.8	0.8	6.4	165	0.7	17	20	10	3/8"-24
SDR4P8R2	1/4	6	800	1.8	0.8	6.4	165	0.7	17	20	10	3/8"-24
SDR4P18R2	1/4	6	1800	1.6	0.7	5.8	150	0.7	17	20	10	3/8"-24
SDR4P20R2	1/4	6	2000	1.6	0.7	5.8	150	0.7	17	20	10	3/8"-24
SDR4P24R2	1/4	6	2400	1.6	0.7	5.8	150	0.7	17	20	10	3/8"-24
SDR4P30R2	1/4	6	3000	1.6	0.7	5.8	150	0.7	17	20	10	3/8"-24
SDR4P33R2	1/4	6	3300	1.6	0.7	5.8	150	0.7	17	20	10	3/8"-24



Distributed By:

Dobco Equipment Limited  
1-2430 Lucknow Drive,  
Mississauga, Ontario  
L5S 1V3 Canada  
  
905.672.5557  
  
sales@dobcoeqp.com

www.dobcoeqp.com sales@dobcoeqp.com DOBCO EQUIPMENT LTD. 905-672-5557

DOBCO EQUIPMENT LTD. 905-672-5557 sales@dobcoeqp.com