

**Automated  
Systems**

**Still on the line.  
Still working hard.**

# Tork-Trak™



**DOBCO**  
EQUIPMENT LTD

1-2430 Lucknow Drive, Mississauga, Ontario L5S 1V3.  
Tel: 905-672-5557 Fax: 905-672-5559  
Email: [sales@dobcoeqp.com](mailto:sales@dobcoeqp.com) [www.dobcoeqp.com](http://www.dobcoeqp.com)

**COOPER** Power Tools

# Tork-Trak™



1-2430 Lucknow Drive, Mississauga, Ontario L5S 1V3.  
Tel: 905-672-5557 Fax: 905-672-5559  
Email: sales@dobcoeqp.com www.dobcoeqp.com

Automated Systems

## Single Channel Controller

The new **Tork-Trak™** is an extraordinary Single Channel Fastening Controller which provides programmable automation on your assembly line.

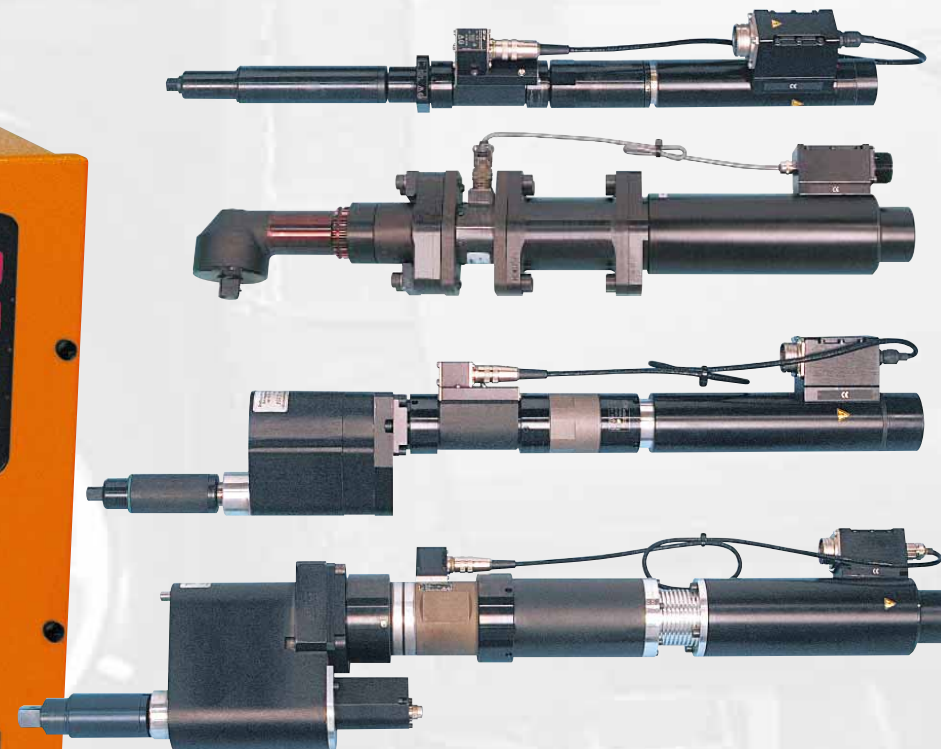
The design technology is both user-friendly and technically advanced, delivering speed, repeatability and reduction of the possibility of error. It can increase your profit potential with design ingenuity that enables the **Tork-Trak™** to troubleshoot and control simultaneously. It not only performs the work, it also looks for problems during the process.

With a wide range of hardware and software options, The **Tork-Trak™** controller can be customized to accommodate your specific fastening requirements and assembly line communication protocols. The **Tork-Trak™** controller is designed to overcome the most persistent problems inherent in many of today's complex manufacturing environments:

The **Tork-Trak™** controller is capable of handling a



broad array of tooling from Cooper Power Tools. In fact, it can control all fixtured and portable electric tools offered by Cooper – covering a torque range of 1 to 4000 Nm and it can control all tools including Cleco, DGD, EMT and Rotor.

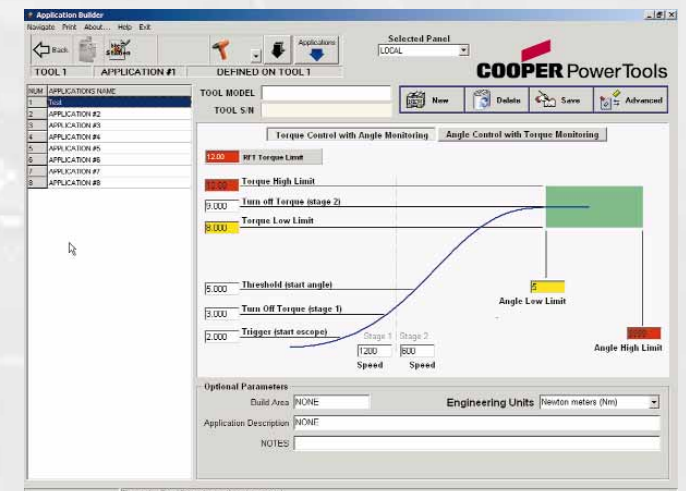


■ The TM Multi-Trak software set on the **Tork-Trak™** is the same software as on the Cooper Power Tools Automated Systems multiple spindle panels so there's no need to learn different programming procedures.

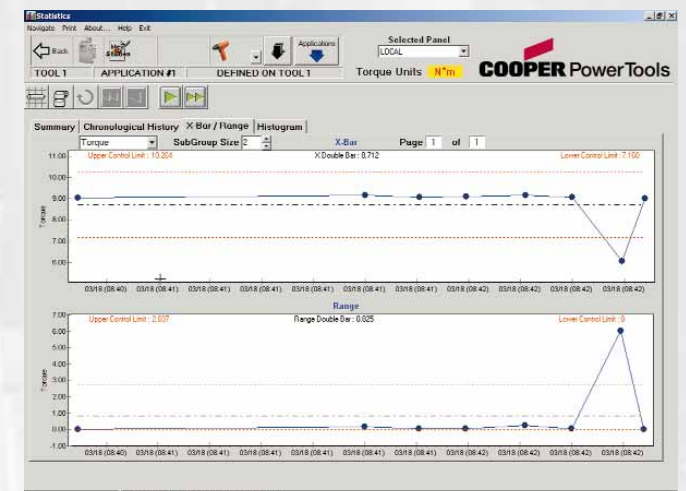
■ One of the inherent drawbacks of other controllers is the user interface – which tends to be unnecessarily complex and difficult to use. So, we have designed ours to be as simple as possible, to improve speed and reduce the potential for error. Ours is highly intuitive – there is no need to consult a manual or use a laminated “cheat sheet” because everything required to operate the controller is right on the screen.

■ **Tork-Trak™** helps save both time and money by employing a screen navigation strategy that makes it easy to find your way around. For example, we have eliminated the sequential nature of other controllers, enabling efficiency and avoiding wasted steps.

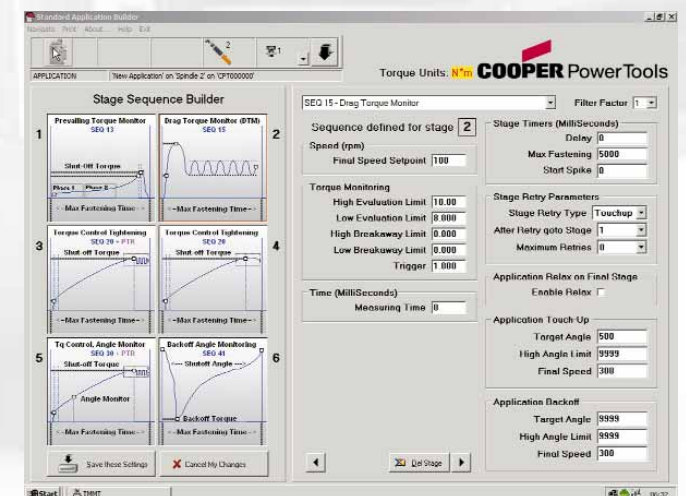
■ Perfection in critical fastening applications demands an accurate and consistent flow of real time information. The **Tork-Trak™** controller supports the monitoring, evaluation and editing of any procedure through the use of unique graphic displays, including histograms, diagnostics, and statistical process control data. X-Bar and Range charts, Histograms and Statistical Summary tables provide the ability to monitor the process and edit parameters before little problems become big problems. The Oscilloscope screen supports a thorough analysis of the torque and rotation relationship on every application. We provide you with a way to analyze your product fastening process and manage your process results.



Basic Application Builder Screen – Torque, Angle, Application and Speed editing.



Statistics Screen – X-bar and Range Charts.



Advanced Application Builder Screen – Fastening strategy selection and rundown stage programming.

# Tork-Trak™ Single Channel Controller

## Controller Hardware Features

- Industrial PC with PC-104 board set.
- High resolution color TFT digital LCD display with 1024 x 768 pixels – XGA with DVD viewing quality!
- All cables connect through a bulkhead below the front door, allowing several controllers to be mounted side by side.
- Eight front panel indicator lights.  
High-Low Torque & Angle, Accept & Reject and two user programmable indicator lights.
- 16 user programmable physical outputs/inputs and mating connector
- EtherNet port (standard)
- USB port for memory stick file transfer (standard)
- Keyboard / mouse ports
- Keyboard with integrated trackball supplied with each controller
- Field Bus port
- 650 MHz Celeron processor, PC-104 CPU
- 24 VDC, fused, for physical I/O, replaceable from the outside of the enclosure
- Serial RS-232 port for barcode and serial data.
- Additional USB/EtherNet ports available as an option

## Controller Software Features

- Industrial PC Windows operating system
- Ease of programming
- Same TM Multi-Trak software as used on the Cooper Power Tools Automated Systems multiple spindle panels
- Assures quality fastening on critical assembly processes
- Single or dual transducers to verify torque
- Self diagnostics
- Twenty-eight user programmable fastening strategies including Yield and Gradient as well as self-tap and tube-nut
- Network communication capability
  - RS-232 Serial
  - EtherNet TCP/IP
  - EtherNet data and control protocols
  - FieldBus
  - DeviceNet
  - ProfiBus
  - InterBus
  - USB
- Expandable physical I/O (8 in/8 out are standard)
- Expandable spindle support through use of low-cost Satellites
- FieldBus virtual I/O

## Controller Tool Compatibility

- EMT Series fixtured tools
- DGD Series fixtured tools
- Rotor™ tools
- Cleco® tools



ISO 14001: 1996



QS-9000:98 TE

For more information please contact:

**Automated Systems**  
NORTH AMERICA  
4121 N. Atlantic Blvd.  
Auburn Hills, MI 48326  
Phone: (248) 391-3700  
Fax: (248) 391-7824  
www.cooper-automatedsystems.com



**Cooper Power Tools**  
P.O. Box 1410  
Lexington, SC 29071-1410  
USA  
Phone: 800-845-5629  
Fax: 803-808-6735

**Cooper Power Tools**  
5925 McLaughlin Road  
Mississauga, Ontario  
Canada L5R 1B8  
Phone: (905) 501-4785  
Fax: (905) 501-4786

**Cooper Power Tools de México S.A. de C.V.**  
Libramiento La Joya No. 1  
Bodega No. 2  
Esq. Politécnico  
Barrio San José  
Cuautitlán, Edo de México  
C.P. 54870  
Phone: (011) 525 5899 9510  
Fax: (011) 525 5870 5012

**Cooper Tools Industrial Ltda.**  
Av. Liberdade, 4055  
Zona Industrial - Iporanga  
18087-170 Sorocaba, SP  
Brazil  
Tel: +55-15-3238-3929  
Fax: +55-15-228-3260

**Cooper Power Tools SAS**  
Zone industrielle – B.P. 28  
77831 Ozoir-la-Ferrière Cedex  
France  
Téléphone: +33-1-6443-2200  
Téléfax: +33-1-6440-1717

**DGD/Automated Systems**  
Postfach 30  
D-73461 Westhausen  
Germany  
Phone: +49-7363-810  
Fax: +49-7363-81222

**Cooper Tools Hungária Kft.**  
Berkenyefa sor 7  
H-9027 Győr  
Hungary  
Tel: +36 96 505 300  
Fax: +36 96 505 301

**Cooper (China) Co., Ltd.**  
18th Floor Yu An Building  
738 Dongfang Road  
Pudong, Shanghai 200122  
China  
Phone: +86 21 5831 6805  
Fax: +86 21 5831 6762

Visit us online at [www.cooper-automatedsystems.com](http://www.cooper-automatedsystems.com)