

SOCKETS & ATTACHMENTS



Ontario's Largest
Pneumatic & Hydraulic Tool Distributor

1-2430 Lucknow Drive, Mississauga, Ontario L5S 1V3. Tel: 905-672-5557 Fax: 905-672-5559
Email: sales@dobcoeqp.com www.dobcoeqp.com

FEATURES & BENEFITS

- One of the largest socket ranges available in Canada; from 1/4" to 2 1/2" drive and up to 8" hex diameter.
- Professional grade sockets are available in chrome, impact, hex head & Torx® and designed to meet or exceed all government specifications.
- Sockets are available in SAE & Metric, 6, 8 & 12 point, in standard or deep lengths.
- A unique socket design eliminates fastener rounding while providing a secure and powerful hold; even on worn or rounded fasteners.
- Innovative handle, gear & pawl designs allow the 20, 32 & 40 tooth ratchets to deliver remarkable torque, speed and safety.
- Ratchets are drop forged, polished and chrome plated to an unmatched industry leading finish.
- Over 155 conveniently packaged and assembled ratchet, attachment and socket sets to choose from.

1/4" Drive	52
3/8" Drive	60
1/2" Drive	82
3/4" Drive	103
1" Drive	112
1 1/2" Drive	117
2 1/2" Drive	119



Reversible Ratchets

Part No.	Description	Length
V25	Reversible ratchet, 20 tooth - Chrome	5"
V25B	Reversible ratchet, 20 tooth - Black	5"

Federal Spec. CDA 39-GP-12b U.S. GGG-W-641E ANSI B107.10M



Screwdriver Handle Ratchet

Part No.	Description	Length
10820	Reversible Ratchet, 20 tooth - Chrome with Orange Florescent Handle	6½"



Flex Handle

Part No.	Description	Length
V26	Flex Handle - Chrome	5½"

Federal Spec. CDA 39-GP-12b U.S. GGG-W-641E ANSI B107.10M



Hand Driver - Flex

Part No.	Description	Length
SD14	Hand Driver, flexible shank	6⅝"

Federal Spec. CDA 39-GP-12b U.S. GGG-W-641E



Hand Driver

Part No.	Description	Length
V780	Hand Driver, solid shank	6"

Federal Spec. CDA 39-GP-12b U.S. GGG-W-641E. ANSI B107.10M



Sliding T Handle

Part No.	Description	Length
V17	Sliding T Handle - Chrome	4½"

Federal Spec. CDA 39-GP-12b U.S. GGG-W-641E. ANSI B107.10M



Extensions - Male Square End

Part No.	Square Male		Description	Length
	1/4"	1/4"		
79242	1/4"	1/4"	1/4" male hex drive - extension	2"
79244	1/4"	1/4"	1/4" male hex drive - extension	4"

Extension - Flex

Part No.	Description	Length
MF6	Extension - Flexible	6"

Federal Spec. CDA 39-GP-12b U.S. GGG-W-641E ANSI B107.10M



Extensions

Part No.	Description	Length
V602	Chrome Extension	2"
V603	Chrome Extension	3"
V606	Chrome Extension	6"
V610	Chrome Extension	10"
V614	Chrome Extension	14"
V602W	Chrome Wobble Extension	2"
V604W	Chrome Wobble Extension	4"
V606W	Chrome Wobble Extension	6"

Federal Spec. CDA 39-GP-12b U.S. GGG-W-641E ANSI B107.10M



No. 14003S 3 Piece Wobble Extension Set

Part No.	Length
V602W	2"
V604W	4"
V606W	6"



Universal Joint

Part No.	Description	Length
V760	Universal joint	1 1/4"

Federal Spec. CDA 39-GP-12b U.S. GGG-W-641E ANSI B107.10M



Adapter

Part No.	Description	Female	Male	Length
4216*	Adapter	3/8"	1/4"	1 3/64"
4217	Adapter	1/4"	3/8"	1 1/8"

Federal Spec. CDA 39-GP-12b U.S. GGG-W-641E ANSI B107.10M
* Due to the nature of the product this item is not warranted.

No. 42506 6 Piece Adapter Set

Part No.	Description	Length
4206	1/2" Female, 3/8" Male	1.42"
4215	3/8" Female, 1/2" Male	1.47"
4216	3/8" Female, 1/4" Male	1.05"
4217	1/4" Female, 3/8" Male	1.03"
4298	1/2" Female, 3/4" Male	1.80"
4299	3/4" Female, 1/2" Male	2.04"

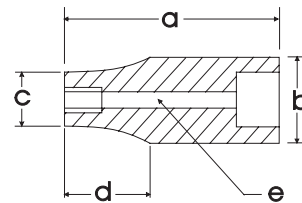
Includes socket rail # SB071607



6 & 12 Point Standard Length

Hex Size	6 Point Part No.	12 Point Part No.	Overall Length in. a	Drive End in. b	Hex End in. c	Taper Length in. d	Bolt Clearance in. e
5/32"	V5	—	0.88	0.45	0.29	0.44	0.15
3/16"	V6	V106	0.88	0.45	0.31	0.44	0.15
7/32"	V7	V107	0.88	0.45	0.34	0.44	0.15
1/4"	V8	V108	0.88	0.45	0.38	0.44	0.20
9/32"	V9	V109	0.88	0.45	0.42	0.44	0.18
5/16"	V10	V110	0.88	0.46	0.46	—	0.21
11/32"	V11	V111	0.88	0.50	0.50	—	0.21
3/8"	V12	V112	0.88	0.55	0.55	—	0.43
7/16"	V14	V114	0.88	0.61	0.61	—	0.51
1/2"	V16	V116	0.88	0.68	0.68	—	0.58
9/16"	V18	V118	0.88	0.70	0.70	—	0.65

Federal Spec. CDA 39-GP-12b U.S. GGG-W-641E ANSI B107.1



6 & 12 Point Deep Length

Hex Size	6 Point Part No.	12 Point Part No.	Overall Length in. a	Drive End in. b	Hex End in. c	Taper Length in. d	Bolt Clearance in. e
3/16"	VL6	VL106	2.00	0.45	0.31	0.98	0.21
7/32"	VL7	VL107	2.00	0.45	0.35	0.98	0.21
1/4"	VL8	VL108	2.00	0.45	0.39	0.98	0.21
9/32"	VL9	VL109	2.00	0.45	0.43	0.98	0.21
5/16"	VL10	VL110	2.00	0.45	0.45	—	0.26
11/32"	VL11	VL111	2.00	0.50	0.50	—	0.26
3/8"	VL12	VL112	2.00	0.55	0.55	—	0.33
7/16"	VL14	VL114	2.00	0.61	0.61	—	0.41
1/2"	VL16	VL116	2.00	0.68	0.68	—	0.42
9/16"	VL18	VL118	2.00	0.77	0.77	—	0.57

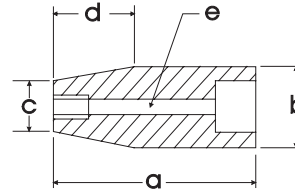
Federal Spec. CDA 39-GP-12b U.S. GGG-W-641E ANSI B107.1

Note: NOT FOR IMPACT USE. All items on this page are for hand use only.

6 Point Standard Length

Hex Size	6 Point Part No.	Overall Length mm a	Drive End mm b	Hex End mm c	Taper Length mm d	Bolt Clearance mm e
4mm	M604	22.25	11.33	6.96	11.07	3.73
4.5mm	M604.5	22.25	11.33	6.96	11.07	3.73
5mm	M605	22.25	11.33	7.85	11.07	4.11
5.5mm	M605.5	22.25	11.33	7.85	11.07	4.11
6mm	M606	22.25	11.33	9.25	11.07	4.90
7mm	M607	22.25	11.33	10.74	11.07	5.49
8mm	M608	22.25	11.76	11.76	—	5.28
9mm	M609	22.25	12.75	12.75	—	5.28
10mm	M610	22.25	13.87	13.87	—	10.16
11mm	M611	22.25	15.57	15.57	—	11.15
12mm	M612	22.25	17.12	17.12	—	12.17
13mm	M613	22.25	18.39	18.39	—	13.18
14mm	M614	22.25	19.81	19.81	—	14.20
15mm	M615	22.25	19.81	19.81	—	14.20

Federal Spec. CDA 39-GP-12M U.S. GGG-W-641E ANSI B107.5



6 Point Deep Length

Hex Size	6 Point Part No.	Overall Length mm a	Drive End mm b	Hex End mm c	Taper Length mm d	Bolt Clearance mm e
4mm	ML604	50.80	11.43	6.96	22.35	5.33
5mm	ML605	50.80	11.35	8.03	22.61	5.33
5.5mm	ML605.5	50.80	11.33	8.83	22.61	5.33
6mm	ML606	50.80	11.33	9.37	22.61	6.10
7mm	ML607	50.80	11.33	10.74	22.61	6.10
8mm	ML608	50.80	11.33	11.33	—	6.10
9mm	ML609	50.80	12.57	12.57	—	6.48
10mm	ML610	50.80	13.82	13.82	—	6.10
11mm	ML611	50.80	15.57	15.57	—	6.10
12mm	ML612	50.80	17.12	17.12	—	6.10
13mm	ML613	50.80	18.39	18.39	—	6.10
14mm	ML614	50.80	19.63	19.63	—	6.10

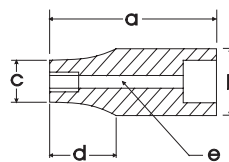
Federal Spec. CDA 39-GP-12M U.S. GGG-W-641E ANSI B107.5



Note: NOT FOR IMPACT USE. Above items on this page are for hand use only.

Female Torx® Impact Sockets

Size	Part No.	Overall Length in. a	Drive End in. b	Hex End in. c	Taper Length in. d	Bolt Clearance in. e
E4	14004	1.0	0.5	0.25	0.33	0.83
E5	14005	1.0	0.5	0.30	0.33	0.81
E6	14006	1.0	0.5	0.33	0.33	0.79
E7	14007	1.0	0.5	0.35	0.33	0.75
E8	14008	1.0	0.5	0.39	0.33	0.75





15008

**No. 15008 8 Pieces 6 Point
Standard SAE Socket Set**

Contains: 1/4", 9/32", 5/16", 11/32", 3/8", 7/16", 1/2", 9/16"
Includes socket rail # SB060810

**No. 15009 9 Pieces 6 Point
Standard SAE Socket Set**

Contains: 3/16", 7/32", 1/4", 9/32", 5/16", 11/32", 3/8", 7/16", 1/2"
Includes socket rail # SB060810

**No. 15010 10 Pieces 6 Point
Standard SAE Socket Set**

Contains: 3/16", 7/32", 1/4", 9/32", 5/16", 11/32", 3/8", 7/16", 1/2", 9/16"
Includes socket rail # SB060810



15108

**No. 15108 8 Pieces 12 Point
Standard SAE Socket Set**

Contains: 1/4", 9/32", 5/16", 11/32", 3/8", 7/16", 1/2", 9/16"
Includes socket rail # SB060810

**No. 15110 10 Pieces 12 Point
Standard SAE Socket Set**

Contains: 3/16", 7/32", 1/4", 9/32", 5/16", 11/32", 3/8", 7/16", 1/2", 9/16"
Includes socket rail # SB060810



15208

**No. 15208 8 Pieces 6 Point
Deep SAE Socket Set**

Contains: 1/4", 9/32", 5/16", 11/32", 3/8", 7/16", 1/2", 9/16"
Includes socket rail # SB060810

**No. 15210 10 Pieces 6 Point
Deep SAE Socket Set**

Contains: 3/16", 7/32", 1/4", 9/32", 5/16", 11/32", 3/8", 7/16", 1/2", 9/16"
Includes socket rail # SB060810

**No. 15308 8 Pieces 12 Point
Deep SAE Socket Set**

Contains: 1/4", 9/32", 5/16", 11/32", 3/8", 7/16", 1/2", 9/16"
Includes socket rail # SB060810



15308

**No. 15310 10 Pieces 12 Point
Deep SAE Socket Set**

Contains: 3/16", 7/32", 1/4", 9/32", 5/16", 11/32", 3/8", 7/16", 1/2", 9/16"
Includes socket rail # SB060810

**No. 19012 12 Pieces 6 Point
Standard Metric Socket Set**

Contains: 4, 5, 6, 7, 8, 9, 10, 11, 12, 13, 14, 15mm
Includes socket rail # SB070812



19012

**No. 19014 14 Pieces 6 Point
Standard Metric Socket Set**

Contains: 4, 4.5, 5, 5.5, 6, 7, 8, 9, 10, 11, 12, 13, 14, 15mm
Includes socket rail # SB070812

**No. 19212 12 Pieces 6 Point
Deep Metric Socket Set**

Contains: 4, 5, 5.5, 6, 7, 8, 9, 10, 11, 12, 13, 14mm
Includes socket rail # SB070812



19212

**No. 24510 10 Pieces
Female Torx® Impact Socket Set**

Contains: 1/4" Drive: E4, E5, E6, E7, E8
3/8" Drive: E10, E12, E14, E16
1/2" Drive: E18

Includes socket rail # SB070812



24510



No. 10805 5 Pieces Chrome Ratchet & Attachments

Includes: Reversible Ratchet, U-Joint, 2" Extension, 6" Extension, Hand Driver, Metal Box # 93001



No. 15015 15 Pieces 6 Point Standard SAE Socket Set

Contains: 3/16", 7/32", 1/4", 9/32", 5/16", 11/32", 3/8", 7/16", 1/2", 9/16"
Includes: Reversible ratchet, U-Joint, 2" Extension, 6" Extension, Hand Driver, Metal Box # 93001, Socket Rail #SB060810



No. 15025 25 Pieces 6 Point Standard & Deep SAE Socket Set

Contains: Standard 3/16", 7/32", 1/4", 9/32", 5/16", 11/32", 3/8", 7/16", 1/2", 9/16"
Deep 3/16", 7/32", 1/4", 9/32", 5/16", 11/32", 3/8", 7/16", 1/2", 9/16"

Includes: Reversible Ratchet, U-Joint, 2" Extension, 6" Extension, Hand Driver, Metal Box # 93001, 2 Socket Rails # SB060810

No. 15125 25 Pieces 12 Point Standard & Deep SAE Socket Set

Contains: Standard 3/16", 7/32", 1/4", 9/32", 5/16", 11/32", 3/8", 7/16", 1/2", 9/16"
Deep 3/16", 7/32", 1/4", 9/32", 5/16", 11/32", 3/8", 7/16", 1/2", 9/16"

Includes: Reversible Ratchet, U-Joint, 2" Extension, 6" Extension, Hand Driver, Metal Box # 93001, 2 Socket Rails # SB060810

**No. 19017 17 Pieces 6 Point
Standard Metric Socket Set**

Contains: 4, 5, 6, 7, 8, 9, 10, 11, 12, 13, 14, 15mm
Includes: Reversible Ratchet, U-Joint, 2" Extension, 6" Extension,
Hand Driver, Metal Box # 93001, Socket Rail # SB070812



**No. 19029 29 Pieces 6 Point
Standard & Deep Metric Socket Set**

Contains: **Standard** 4, 5, 6, 7, 8, 9, 10, 11, 12, 13, 14, 15mm
Deep 4, 5, 5.5, 6, 7, 8, 9, 10, 11, 12, 13, 14mm
Includes: Reversible Ratchet, U-Joint, 2" Extension, 6" Extension,
Hand Driver, Metal Box # 93001, 2 Socket Rails # SB070812



**No. 15027SH 27 Pieces 6 Point
SAE & Metric Socket & Attachment Set**

Contains: 4, 5, 6, 7, 8, 9, 10, 11, 12, 13mm,
3/16", 7/32", 1/4", 9/32", 5/16", 11/32", 3/8", 7/16", 1/2", 9/16"
Includes: 20 Tooth Ratchet, Flex Handle, 2" Extension,
3" Extension, 6" Extension, U-Joint, Hand Driver,
Plastic Carrying Case # 93014





Reversible Ratchet

Part No.	Description	Length
T88	Chrome reversible ratchet, 20 tooth	7½"
T85	Chrome reversible ratchet, 32 tooth	7½"
T85B	Black reversible ratchet, 32 tooth	7½"

Federal Spec. CDA 39-GP-12b U.S. GGG-W-641E ANSI B107.10M



Screwdriver Handle Ratchet

Part No.	Description	Length
20820	Reversible Ratchet, 20 tooth with Orange Florescent Handle	9"

Federal Spec. CDA 39-GP-12b U.S. GGG-W-641E ANSI B107.10M



Reversible Ratchet - Flexible Head

Part No.	Description	Length
T81	Chrome flexible head ratchet, 20 tooth	11⅜"
T86	Chrome flexible head ratchet, 32 tooth	11⅜"

Federal Spec. CDA 39-GP-12b U.S. GGG-W-641E ANSI B107.10M



Reversible Ratchet - Flexible Head Bent Handle

Part No.	Description	Length
T82	Chrome flexible head ratchet, 20 tooth	11⅜"
T87	Chrome flexible head ratchet, 32 tooth	11⅜"

Federal Spec. CDA 39-GP-12b U.S. GGG-W-641E ANSI B107.10M



Flex Handle

Part No.	Description	Length
T30	Flex Handle	9"

Federal Spec. CDA 39-GP-12b U.S. GGG-W-641E ANSI B107.10M



Speeder

Part No.	Description	Length
T9	Speeder	16¼"

Federal Spec. CDA 39-GP-12b U.S. GGG-W-641E ANSI B107.10M



Hand Driver

Part No.	Description	Length
T42	Hand Driver	6⅞"



Ratchet Sliding T-Handle

Part No.	Description	Length
T36	Chrome sliding T-handle	6⅞"

Extensions - Male Square End

Part No.	Square Male	Description	Length
79282	3/8"	3/8" male hex drive - extension	2"
79263	3/8"	3/8" male hex drive - extension	3"
79265	3/8"	3/8" male hex drive - extension	5"



Extension - Flex

Part No.	Description	Length
MF8	Flexible	7 1/4"

Federal Spec. CDA 39-GP-12b U.S. GGG-W-641E ANSI B107.10M



Extensions

Part No.	Description	Length
T1	Chrome Extension	1 1/2"
T31	Chrome Extension	3"
T4	Chrome Extension	6"
T41	Chrome Extension	8"
T5	Chrome Extension	12"
T6	Chrome Extension	20"
T31W	Chrome Wobble Extension	3"
T4W	Chrome Wobble Extension	6"
T41W	Chrome Wobble Extension	8"
T5W	Chrome Wobble Extension	12"

Federal Spec. CDA 39-GP-12b U.S. GGG-W-641E ANSI B107.10M



No. T4S 4 Pieces Chrome Extension Set

Part No.	Length
T31	3"
T4	6"
T41	8"
T5	12"



No. 38004S 4 Pieces Chrome Wobble Extension Set

Part No.	Length
T31W	3"
T4W	6"
T41W	8"
T5W	12"





Universal Joint

Part No.	Description	Length
T3	Universal joint	1 3/4"

Federal Spec. CDA 39-GP-12b U.S. GGG-W-641E ANSI B107.10M



Drag Link Socket

Part No.	Description	Tip Size	Length
T27	Drag link socket	.113 x 1 1/16"	1 3/4"

Federal Spec. CDA 39-GP-12b U.S. GGG-W-641E



Ratchet Adapter

Part No.	Description	Length
T58	Reversible Ratchet Adapter	2 1/4"



Adapters

Part No.	Description	Female	Male	Length
4215	Adapter	3/8"	1/2"	1 25/64"
4216*	Adapter	3/8"	1/4"	1 3/64"

* Due to the nature of the product this item is not warranted.



No. 42506 6 Pieces Adapter Set

Part No.	Description	Length
4206	1/2" Female, 3/8" Male	1.42"
4215	3/8" Female, 1/2" Male	1.47"
4216	3/8" Female, 1/4" Male	1.05"
4217	1/4" Female, 3/8" Male	1.03"
4298	1/2" Female, 3/4" Male	1.80"
4299	3/4" Female, 1/2" Male	2.04"

Includes socket rail # SB071607

Spark Plug Socket

Part No.	Description	Length
21221	Spark plug socket, 5/8"	2 5/8"
LT26R	Spark plug socket, 1 3/16"	2 5/16"

Federal Spec. CDA 39-GP-12b U.S. GGG-W-641E



21221



LT26R

Screwdriver Socket

Part No.	Description	Tip Size	Length
T34	Screwdriver socket	3/8" x 1/16"	3 3/16"

Federal Spec. CDA 39-GP-12b U.S. GGG-W-641E



**Extensions - Impact
Black Industrial Finish**

Part No.	Female	Male	Length
P2-103A	3/8"	3/8"	3"
P2-106A	3/8"	3/8"	6"

Federal Spec. CDA 39-GP-12b U.S. GGG-W-641E



**Universal Joint - Impact
Black Industrial Finish**

Part No.	Female	Male	Length
P2-140A*	3/8"	3/8"	2 3/8"

Federal Spec. CDA 39-GP-12b U.S. GGG-W-641E

* Due to the nature of the product this item is not warranted.



**Adapter - Impact
Black Industrial Finish**

Part No.	Female	Male	Length
PA2-4A*	3/8"	1/2"	1 3/8"

Federal Spec. CDA 39-GP-12b U.S. GGG-W-641E

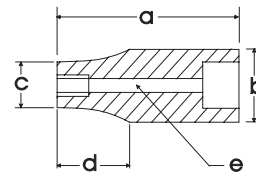
* Due to the nature of the product this item is not warranted.



6 & 12 Point Standard Length

Hex Size	6 Point Part No.	12 Point Part No.	Overall Length in. a	Drive End in. b	Hex End in. c	Taper Length in. d	Bolt Clearance in. e
1/4"	TH8S	T8	0.94	0.66	0.41	0.44	0.17
5/16"	TH10	T10	0.94	0.66	0.46	0.44	0.32
3/8"	TH12	T12	0.94	0.66	0.56	0.44	0.38
7/16"	TH14	T14	0.94	0.66	0.66	—	0.44
1/2"	TH16	T16	0.97	0.72	0.72	—	0.51
9/16"	TH18	T18	0.97	0.78	0.78	—	0.57
5/8"	TH20	T20	1.01	0.86	0.86	—	0.64
11/16"	TH22	T22	1.01	0.95	0.95	—	0.70
3/4"	TH24	T24	1.13	1.00	1.00	—	0.76
13/16"	TH26	T26	1.13	1.08	1.08	—	0.83
7/8"	TH28	T28	1.25	1.17	1.17	—	0.88
15/16"	TH30	T30S	1.25	1.25	1.25	—	0.88
1"	TH32	T32S	1.25	1.25	1.30	—	0.90

Federal Spec. CDA 39-GP-12b U.S. GGG-W-641E ANSI B107.10M



6 & 12 Point Deep Length

Hex Size	6 Point Part No.	12 Point Part No.	Overall Length in. a	Drive End in. b	Hex End in. c	Taper Length in. d	Bolt Clearance in. e
1/4"	T80	LT8	2.55	0.74	0.41	0.54	0.18
5/16"	T100	LT10	2.55	0.74	0.47	0.54	0.18
3/8"	T120	LT12	2.50	0.65	0.56	0.87	0.31
7/16"	T140	LT14	2.50	0.65	0.65	—	0.37
1/2"	T160	LT16	2.50	0.72	0.72	—	0.34
9/16"	T180	LT18	2.50	0.77	0.77	—	0.51
5/8"	T200	LT20	2.50	0.86	0.86	—	0.62
11/16"	T220	LT22	2.50	0.95	0.95	—	0.66
3/4"	T240	LT24	2.50	1.00	1.00	—	0.74
13/16"	T260	LT26	2.51	1.17	1.17	—	0.88
7/8"	T280	LT28	2.53	1.16	1.16	—	0.88
15/16"	T300	LT30	2.53	1.25	1.25	—	0.88
1"	T320	LT32	2.53	1.30	1.30	—	0.88

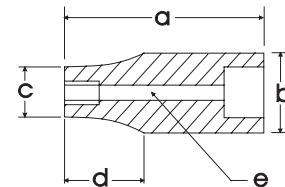
Federal Spec. CDA 39-GP-12b U.S. GGG-W-641E ANSI B107.10M

Note: NOT FOR IMPACT USE. All items on this page are for hand use only.

6 & 12 Point Standard Length

Hex Size	6 Point Part No.	12 Point Part No.	Overall Length mm a	Drive End mm b	Hex End mm c	Taper Length mm d	Bolt Clearance mm e
6mm	MT6H	MT6	23.83	16.76	9.93	11.13	4.32
7mm	MT7H	MT7	23.83	16.69	10.52	11.13	4.32
8mm	MT8H	MT8	23.83	16.69	11.63	11.13	5.56
9mm	MT9H	MT9	23.83	16.69	12.90	11.13	5.56
10mm	MT10H	MT10	23.83	16.66	14.81	10.74	7.62
11mm	MT11H	MT11	23.83	16.64	16.64	0.00	9.40
12mm	MT12H	MT12	24.59	17.17	17.17	0.00	9.27
13mm	MT13H	MT13	24.59	18.39	18.39	0.00	9.27
14mm	MT14H	MT14	24.59	19.74	19.74	0.00	13.84
15mm	MT15H	MT15	24.59	20.73	20.73	0.00	14.86
16mm	MT16H	MT16	25.73	21.89	21.89	0.00	9.65
17mm	MT17H	MT17	25.73	23.55	23.55	0.00	12.34
18mm	MT18H	MT18	25.73	24.18	24.18	0.00	18.24
19mm	MT19H	MT19	28.65	25.60	25.60	0.00	19.23
20mm	MT20H	MT20	30.0	28.0	28.0	—	14.81
21mm	MT21H	MT21	30.0	28.0	28.0	—	16.23
22mm	MT22H	MT22	30.0	30.0	30.0	—	17.38
23mm	MT23H	MT23	30.0	32.0	32.0	—	18.25
24mm	MT24H	—	30.0	32.0	32.0	—	22.48
25mm	MT25H	—	30.0	34.0	34.0	—	19.05
26mm	MT26H	MT26	30.0	34.0	34.0	—	19.05

Federal Spec. CDA 39-GP-12b U.S. GGG-W-641E ANSI B107.5



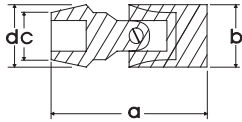
6 & 12 Point Deep Length

Hex Size	6 Point Part No.	12 Point Part No.	Overall Length mm a	Drive End mm b	Hex End mm c	Taper Length mm d	Bolt Clearance mm e
6mm	MTL6H	MTL6	63	16.9	9.9	38	6.99
7mm	MTL7H	MTL7	63	16.9	10.6	38	5.59
8mm	MTL8H	MTL8	63	16.9	11.8	37	5.89
9mm	MTL9H	MTL9	63	16.48	12.93	21.97	7.87
10mm	MTL10H	MTL10	63	16.48	14.83	21.97	7.87
11mm	MTL11H	MTL11	63	16.51	16.51	—	8.74
12mm	MTL12H	MTL12	63	17.20	17.20	—	8.74
13mm	MTL13H	MTL13	63	18.36	18.36	—	11.68
14mm	MTL14H	MTL14	63	19.63	19.63	—	12.45
15mm	MTL15H	MTL15	63	20.65	20.65	—	13.59
16mm	MTL16H	MTL16	63	21.84	21.84	—	15.62
17mm	MTL17H	MTL17	63	23.50	23.50	—	16.76
18mm	MTL18H	MTL18	63	24.13	24.13	—	16.76
19mm	MTL19H	MTL19	63	25.40	25.40	—	18.80
20mm	MTL20H	—	63	27.1	27.1	—	15.49
21mm	MTL21H	—	63	27.8	27.8	—	19.92
22mm	MTL22H	—	63	29.6	29.6	—	19.89
23mm	MTL23H	—	63	31.6	31.6	—	21.84

Federal Spec. CDA 39-GP-12b U.S. GGG-W-641E ANSI B107.5

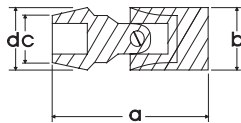


Note: NOT FOR IMPACT USE. All items on this page are for hand use only.



6 Point Universal Joint Sockets Standard Length

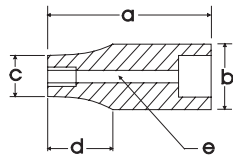
Hex Size	6 Point Part No.	Overall Length in. a	Drive End in. b	Hex End in. c	Drive Width in. d
3/8"	TU120	1.66	0.75	0.59	0.75
7/16"	TU140	1.66	0.75	0.64	0.75
1/2"	TU160	1.66	0.75	0.71	0.75
9/16"	TU180	1.71	0.75	0.79	0.79
5/8"	TU200	1.71	0.75	0.87	0.87
11/16"	TU220	1.80	0.75	0.94	0.94
3/4"	TU240	1.80	0.75	1.02	1.02



6 Point Universal Joint Sockets

Hex Size	6 Point Part No.	Overall Length mm a	Drive End mm b	Hex End mm c	Drive Width mm d
10mm	MTF10H	40	18	14	18
11mm	MTF11H	40	18	16	18
12mm	MTF12H	40	18	18	18
13mm	MTF13H	40	18	18	18
14mm	MTF14H	40	18	20	20
15mm	MTF15H	43	18	21	21
16mm	MTF16H	43	18	22	22
17mm	MTF17H	46	18	24	24
18mm	MTF18H	46	18	25	25
19mm	MTF19H	47	18	25	25

Federal Spec. CDA 39-GP-12b U.S. GGG-W-641E ANSI B107.5



Double Square - Standard Length

Hex Size	8 Point Part No.	Overall Length in. a	Drive End in. b	Hex End in. c	Taper Length in. d	Bolt Clearance in. e
1/4"	TS8	1.10	0.66	0.5	0.45	0.20
5/16"	TS10	1.10	0.66	0.55	0.45	0.20
3/8"	TS12	1.10	0.66	0.66	—	0.20
7/16"	TS14	1.10	0.7	0.7	—	0.20
1/2"	TS16	1.10	0.86	0.86	—	0.20
9/16"	TS18	1.20	0.94	0.94	—	0.20
5/8"	TS20	1.20	1.02	1.02	—	0.20

Federal Spec. CDA 39-GP-12b U.S. GGG-W-641E ANSI B107.1

Note: NOT FOR IMPACT USE. All items on this page are for hand use only.

Hex Head Sockets - Standard Length

Hex Size	Part No.	Overall Length	Replacement Bit Part No.	Bit Length
1/8"	TW4	2.25"	77408	1.5"
5/32"	TW5	2.25"	77410	1.5"
3/16"	TW6	2.25"	77412	1.5"
7/32"	TW7	2.25"	77414	1.5"
1/4"	TW8	2.25"	77416	1.5"
5/16"	TW10	2.25"	77420	1.5"
3/8"	TW12	2.25"	77424	1.5"



Hex Head Sockets - Extra Long

Hex Size	Part No.	Overall Length	Replacement Bit Part No.	Bit Length
1/8"	TW4L	4.00"	77508	3.0"
5/32"	TW5L	4.00"	77510	3.0"
3/16"	TW6L	4.00"	77512	3.0"
7/32"	TW7L	4.00"	77514	3.0"
1/4"	TW8L	4.00"	77516	3.0"
5/16"	TW10L	4.00"	77520	3.0"
3/8"	TW12L	4.00"	77524	3.0"



Hex Head Sockets - Standard Length

Hex Size	Part No.	Overall Length mm	Replacement Bit Part No.	Bit Length mm
4mm	MTW4	57	77604	31
5mm	MTW5	57	77605	31
6mm	MTW6	57	77606	31
7mm	MTW7	57	77607	31
8mm	MTW8	57	77608	31
9mm	MTW9	57	77609	31
10mm	MTW10	57	77610	31



Hex Head Sockets - Extra Long

Hex Size	Part No.	Overall Length mm	Replacement Bit Part No.	Bit Length mm
4mm	MTW4L	98	77704	70
5mm	MTW5L	98	77705	70
6mm	MTW6L	100	77706	70
7mm	MTW7L	100	77707	70
8mm	MTW8L	100	77708	70
10mm	MTW10L	100	77710	70





Torx® Head Sockets Standard Length

Torx® Size	Regular Part No.	Replacement Bit Part No.	Tamper Resistant Part No.	Replacement Bit Part No.
T6	T606	77806	—	—
T7	T607	77807	T607T	78107
T8	T608	77808	T608T	78108
T9	T609	77809	T609T	78109
T10	T610	77810	T610T	78110
T15	T615	77815	T615T	78115
T20	T620	77820	T620T	78120
T25	T625	77825	T625T	78125
T27	T627	77827	T627T	78127
T30	T630	77830	T630T	78130
T40	T640	77840	T640T	78140
T45	T645	77845	T645T	78245
T50	T650	77850	T650T	78250
T55	T655	77855	—	—

Torx® is a trademark of Camcar Division of Textron, Inc.



Phillips® Head Sockets

Part No.	Phillips® No.	Overall Length	Replacement Bit Part No.	Bit Length
TP1	No. 1	1.93"	76811	0.75"
TP2	No. 2	1.93"	76812	0.75"
TP3	No. 3	1.93"	76813	0.75"
TP4	No. 4	1.93"	76814	0.75"

**No. 25009 9 Pieces 6 Point
Standard SAE Socket Set**

Contains: 3/8", 7/16", 1/2", 9/16", 5/8", 11/16", 3/4", 13/16", 7/8"
Includes socket rail # SB111211

**No. 25010 10 Pieces 6 Point
Standard SAE Socket Set**

Contains: 5/16", 3/8", 7/16", 1/2", 9/16", 5/8", 11/16", 3/4", 13/16", 7/8"
Includes socket rail # SB111211

**No. 25011 11 Pieces 6 Point
Standard SAE Socket Set**

Contains: 3/8", 7/16", 1/2", 9/16", 5/8", 11/16", 3/4", 13/16", 7/8", 15/16", 1"
Includes socket rail # SB111211

**No. 25012 11 Pieces 6 Point
Standard SAE Socket Set**

Contains: 1/4", 5/16", 3/8", 7/16", 1/2", 9/16", 5/8", 11/16", 3/4", 13/16", 7/8"
Includes socket rail # SB111211

**No. 25013 13 Pieces 6 Point
Standard SAE Socket Set**

Contains: 1/4", 5/16", 3/8", 7/16", 1/2", 9/16", 5/8", 11/16", 3/4", 13/16", 7/8",
15/16", 1"
Includes socket rail # SB111212

**No. 25109 9 Pieces 12 Point
Standard SAE Socket Set**

Contains: 3/8", 7/16", 1/2", 9/16", 5/8", 11/16", 3/4", 13/16", 7/8"
Includes socket rail # SB111211

**No. 25111 11 Pieces 12 Point
Standard SAE Socket Set**

Contains: 3/8", 7/16", 1/2", 9/16", 5/8", 11/16", 3/4", 13/16", 7/8", 15/16", 1"
Includes socket rail # SB111211

**No. 25112 11 Pieces 12 Point
Standard SAE Socket Set**

Contains: 1/4", 5/16", 3/8", 7/16", 1/2", 9/16", 5/8", 11/16", 3/4", 13/16", 7/8"
Includes socket rail # SB111211

**No. 25113 13 Pieces 12 Point
Standard SAE Socket Set**

Contains: 1/4", 5/16", 3/8", 7/16", 1/2", 9/16", 5/8", 11/16", 3/4", 13/16", 7/8",
15/16", 1"
Includes socket rail # SB111212





25211

No. 25209 9 Pieces 6 Point

Deep SAE Socket Set

Contains: 9/16", 7/16", 1/2", 9/16", 5/8", 11/16", 3/4", 13/16", 7/8"

Includes socket rail # SB111211

No. 25211 11 Pieces 6 Point

Deep SAE Socket Set

Contains: 9/16", 7/16", 1/2", 9/16", 5/8", 11/16", 3/4", 13/16", 7/8", 15/16", 1"

Includes socket rail # SB111211

No. 25212 11 Pieces 6 Point

Deep SAE Socket Set

Contains: 1/4", 5/16", 3/8", 7/16", 1/2", 9/16", 5/8", 11/16", 3/4", 13/16", 7/8"

Includes socket rail # SB111211



25311

No. 25309 9 Pieces 12 Point

Deep SAE Socket Set

Contains: 9/16", 7/16", 1/2", 9/16", 5/8", 11/16", 3/4", 13/16", 7/8"

Includes socket rail # SB111211

No. 25311 11 Pieces 12 Point

Deep SAE Socket Set

Contains: 9/16", 7/16", 1/2", 9/16", 5/8", 11/16", 3/4", 13/16", 7/8", 15/16", 1"

Includes socket rail # SB111211

No. 25312 11 Pieces 12 Point

Deep SAE Socket Set

Contains: 1/4", 5/16", 3/8", 7/16", 1/2", 9/16", 5/8", 11/16", 3/4", 13/16", 7/8"

Includes socket rail # SB111211



29011

No. 29011 11 Pieces 6 Point

Standard Metric Socket Set

Contains: 9, 10, 11, 12, 13, 14, 15, 16, 17, 18, 19mm

Includes socket rail # SB111211

No. 29021 21 Pieces 6 Point

Standard Metric Socket Set

Contains: 6, 7, 8, 9, 10, 11, 12, 13, 14, 15, 16, 17, 18, 19,
20, 21, 22, 23, 24, 25, 26mm

Includes 2 socket rails # SB111211

**No. 29111 11 Pieces 12 Point
Standard Metric Socket Set**

Contains: 9, 10, 11, 12, 13, 14, 15, 16, 17, 18, 19mm
Includes socket rail # SB111211



29111

**No. 29119 19 Pieces 12 Point
Standard Metric Socket Set**

Contains: 6, 7, 8, 9, 10, 11, 12, 13, 14, 15, 16, 17, 18, 19,
20, 21, 22, 23, 26mm
Includes 2 socket rails # SB111211

**No. 29211 11 Pieces 6 Point
Deep Metric Socket Set**

Contains: 9, 10, 11, 12, 13, 14, 15, 16, 17, 18, 19mm
Includes socket rail # SB111211



29211

**No. 29212 12 Pieces 6 Point
Deep Metric Socket Set**

Contains: 8, 9, 10, 11, 12, 13, 14, 15, 16, 17, 18, 19mm
Includes socket rail # SB111211

**No. 29214 14 Pieces 6 Point
Deep Metric Socket Set**

Contains: 6, 7, 8, 9, 10, 11, 12, 13, 14, 15, 16, 17, 18, 19mm
Includes socket rail # SB111212

**No. 29311 11 Pieces 12 Point
Deep Metric Socket Set**

Contains: 9, 10, 11, 12, 13, 14, 15, 16, 17, 18, 19mm
Includes socket rail # SB111211



29311

**No. 29314 14 Pieces 12 Point
Deep Metric Socket Set**

Contains: 6, 7, 8, 9, 10, 11, 12, 13, 14, 15, 16, 17, 18, 19mm
Includes socket rail # SB111212

**No. 25507 7 Pieces 6 Point
Standard SAE Universal Joint Socket Set**

Contains: 3/8", 7/16", 1/2", 9/16", 5/8", 11/16", 3/4"
Includes socket rail # SB061207

Federal Spec. CDA 39-GP-12b U.S. GGG-W-641E ANSI B107.1



25507



29506

**No. 29506 6 Pieces 6 Point
Metric Universal Joint Socket Set**

Contains: 10, 11, 12, 13, 14, 15mm
Includes socket rail # SB061207

**No. 29510 10 Pieces 6 Point
Metric Universal Joint Socket Set**

Contains: 10, 11, 12, 13, 14, 15, 16, 17, 18, 19mm
Includes socket rail # SB111211



25407

**No. 25407 7 Pieces 8 Point
Standard SAE Double Square Socket Set**

Contains: 1/4", 5/16", 3/8", 7/16", 1/2", 9/16", 5/8"
Includes socket rail # SB061207



25607

**No. 25607 7 Pieces
Standard Length Hex Head Socket Set**

Contains: 1/8", 5/32", 3/16", 7/32", 1/4", 5/16", 3/8"
Includes socket rail # SB061207



25620

**No. 25620 10 Pieces
SAE Hex Head Socket Set**

Contains: 3/8" Drive: 1/8", 5/32", 3/16", 7/32", 1/4", 5/16", 3/8"
1/2" Drive: 1/2", 9/16", 5/8"
Includes socket rail # SB111211



29607

**No. 29605 5 Pieces Standard Length
Metric Hex Head Socket Set**

Contains: 4, 5, 6, 8, 10mm
Includes socket rail # SB061207

**No. 29607 7 Pieces Standard Length
Metric Hex Head Socket Set**

Contains: 4, 5, 6, 7, 8, 9, 10mm
Includes socket rail # SB061207

No. 25617 7 Pieces
SAE Extra Long Hex Head Socket Set

Contains: 1/8", 5/32", 3/16", 7/32", 1/4", 5/16", 3/8"
Includes socket rail # SB061207



25617

No. 29616 6 Pieces
Metric Extra Long Hex Head Socket Set

Contains: 4, 5, 6, 7, 8, 10mm
Includes socket rail # SB061207



29616

No. 25610 10 Pieces
SAE Hex Head Socket Set
3/8" & 1/2" Drive

Contains: 3/8" Drive Extra Long: 1/8", 5/32", 3/16", 7/32", 1/4",
5/16", 3/8"
1/2" Drive Standard: 1/2", 9/16", 5/8"
Includes socket rail # SB111211



25610

No. 29609 9 Pieces
Metric Hex Head Socket Set
3/8" & 1/2" Drive

Contains: 3/8" Drive: 4, 5, 6, 7, 8, 10mm
1/2" Drive: 12, 14, 17mm
Includes socket rail # SB111211



29609



25708

No. 25708 8 Pieces Torx® Head Socket Set

Contains: T15, T20, T25, T27, T30, T40, T45, T50
Includes socket rail # SB081209



25706

No. 25709 9 Pieces Torx® Head Socket Set

Contains: T6, T7, T8, T9, T10, T15, T20, T25, T27
Includes socket rail # SB081209

No. 25705 5 Pieces Tamper Resistant Torx® Head Socket Set

Contains: T15, T20, T25, T27, T30
Includes socket rail # SB061207

No. 25706 6 Pieces Tamper Resistant Torx® Head Socket Set

Contains: T7, T8, T9, T10, T15, T20
Includes socket rail # SB061207



No. 81003 3 Pieces Screwdriver Handle Ratchet Set

Contains: Orange Florescent Screwdriver Handle Ratchets
1/4", 3/8", & 1/2" Drive

No. 20804 4 Pieces Chrome Ratchet & Attachment Set

Contains: Reversible Ratchet, U-Joint, 3" Extension, 6" Extension,
Metal Box # 93002

No. 25015 15 Pieces 6 Point Standard SAE Socket Set

Contains: 3/8", 7/16", 1/2", 9/16", 5/8", 11/16", 3/4", 13/16", 7/8", 15/16", 1"

Includes: Reversible Ratchet, U-Joint, 3" Extension, 6" Extension, Metal Box # 93002, Socket Rail # SB111211



No. 25215 15 Pieces 6 Point Deep SAE Socket Set

Contains: 3/8", 7/16", 1/2", 9/16", 5/8", 11/16", 3/4", 13/16", 7/8", 15/16", 1"

Includes: 20 Tooth Reversible Ratchet, U-Joint, 3" Extension, 6" Extension, Metal Box # 93002, Socket Rail # SB111211



No. 25026 26 Pieces 6 Point Standard & Deep SAE Socket Set

Contains: Standard 3/8", 7/16", 1/2", 9/16", 5/8", 11/16", 3/4", 13/16", 7/8", 15/16", 1"

Deep 3/8", 7/16", 1/2", 9/16", 5/8", 11/16", 3/4", 13/16", 7/8", 15/16", 1"

Includes: Reversible Ratchet, U-Joint, 3" Extension, 6" Extension, Metal Box # 93002, 2 Socket Rails # SB111211



No. 25115 15 Pieces 12 Point Standard SAE Socket Set

Contains: 3/8", 7/16", 1/2", 9/16", 5/8", 11/16", 3/4", 13/16", 7/8", 15/16", 1"

Includes: Reversible Ratchet, U-Joint, 3" Extension, 6" Extension, Metal Box # 93002, Socket Rail # SB111211





No. 25315 15 Pieces 12 Point Deep SAE Socket Set

Contains: 3/8", 7/16", 1/2", 9/16", 5/8", 11/16", 3/4", 13/16", 7/8", 15/16", 1"

Includes: 20 Tooth Reversible Ratchet, U-Joint, 3" Extension, 6" Extension, Metal Box # 93002, Socket Rail # SB111211



No. 25126 26 Pieces 12 Point Standard & Deep SAE Socket Set

Contains: Standard 3/8", 7/16", 1/2", 9/16", 5/8", 11/16", 3/4", 13/16", 7/8", 15/16", 1"

Deep 3/8", 7/16", 1/2", 9/16", 5/8", 11/16", 3/4", 13/16", 7/8", 15/16", 1"

Includes: Reversible Ratchet, U-Joint, 3" Extension, 6" Extension, Metal Box # 93002, 2 Socket Rails # SB111211



No. 29015 15 Pieces 6 Point Standard Metric Socket Set

Contains: 9, 10, 11, 12, 13, 14, 15, 16, 17, 18, 19mm

Includes: Reversible Ratchet, U-Joint, 3" Extension, 6" Extension, Metal Box # 93002, Socket Rail # SB111211



No. 29215 15 Pieces 6 Point Deep Metric Socket Set

Contains: 9, 10, 11, 12, 13, 14, 15, 16, 17, 18, 19mm

Includes: 20 Tooth Reversible Ratchet, U-Joint, 3" Extension, 6" Extension, Metal Box # 93002, Socket Rail # SB111211

**No. 29026 26 Pieces 6 Point
Standard & Deep Metric Socket Set**

Contains: Standard 9, 10, 11, 12, 13, 14, 15, 16, 17, 18, 19mm
Deep 9, 10, 11, 12, 13, 14, 15, 16, 17, 18, 19mm

Includes: Reversible Ratchet, U-Joint, 3" Extension,
6" Extension, Metal Box # 93002, 2 Socket Rails # SB111211

**No. 29115 15 Pieces 12 Point
Standard Metric Socket Set**

Contains: 9, 10, 11, 12, 13, 14, 15, 16, 17, 18, 19mm

Includes: Reversible Ratchet, U-Joint, 3" Extension,
6" Extension, Metal Box # 93002, Socket Rail # SB111211

**No. 29126 26 Pieces 12 Point
Standard & Deep Metric Socket Set**

Contains: Standard 9, 10, 11, 12, 13, 14, 15, 16, 17, 18, 19mm
Deep 9, 10, 11, 12, 13, 14, 15, 16, 17, 18, 19mm

Includes: Reversible Ratchet, U-Joint, 3" Extension,
6" Extension, Metal Box # 93002

**No. 25033SH 33 Pieces 6 Point
SAE & Metric Socket & Attachment Set**

Contains: 5/16", 3/8", 7/16", 1/2", 9/16", 5/8", 11/16", 3/4", 13/16", 7/8"
7, 8, 9, 10, 11, 12, 13, 14, 15, 16, 17, 18, 19, 20, 21, 22 mm

Includes: 32 Tooth Ratchet, 9" Flex Handle, U-Joint,
3" Extension, 6" Extension, 2 Spark Plug Sockets,
Plastic Carrying Case # 93018

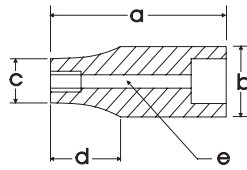




6 Point Standard Length - Impact Black Industrial Finish

Hex Size	6 Point Part No.	Overall Length in. a	Drive End in. b	Hex End in. c	Taper Length in. d	Bolt Clearance in. e
5/16"	P2210	1.18	0.75	0.49	0.51	0.24
3/8"	P2212	1.18	0.75	0.57	0.51	0.28
7/16"	P2214	1.18	0.75	0.67	0.51	0.35
1/2"	P2216	1.18	0.75	0.75	—	0.39
9/16"	P2218	1.18	0.79	0.79	—	0.47
5/8"	P2220	1.18	0.94	0.94	—	0.51
11/16"	P2222	1.18	0.94	0.94	—	0.59
3/4"	P2224	1.18	1.02	1.02	—	0.67

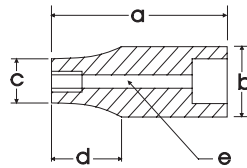
Federal Spec. U.S. GGG-W-660A ANSI B107.2



6 Point Deep Length - Impact Black Industrial Finish

Hex Size	6 Point Part No.	Overall Length in. a	Drive End in. b	Hex End in. c	Taper Length in. d	Bolt Clearance in. e
5/16"	PL2210	2.56	0.75	0.49	0.51	0.24
3/8"	PL2212	2.56	0.75	0.57	0.51	0.28
7/16"	PL2214	2.56	0.75	0.7	0.51	0.35
1/2"	PL2216	2.56	0.75	0.75	—	0.39
9/16"	PL2218	2.56	0.79	0.79	—	0.47
5/8"	PL2220	2.56	0.94	0.94	—	0.51
11/16"	PL2222	2.56	0.94	0.94	—	0.59
3/4"	PL2224	2.56	1.02	1.02	—	0.67

Federal Spec. U.S. GGG-W-660A ANSI B107.2



6 Point Standard Length - Impact Black Industrial Finish

Hex Size	6 Point Part No.	Overall Length mm a	Drive End mm b	Hex End mm c	Taper Length mm d	Bolt Clearance mm e
8mm	MTP8	30	19	12.5	13	7
9mm	MTP9	30	19	14	13	7
10mm	MTP10	30	19	15	13	8
11mm	MTP11	30	19	17	13	9
12mm	MTP12	30	19	19	—	10
13mm	MTP13	30	19	19	—	11
14mm	MTP14	30	20	20	—	12
15mm	MTP15	30	22	22	—	13
16mm	MTP16	30	24	24	—	14
17mm	MTP17	30	24	24	—	15
18mm	MTP18	30	25	25	—	16
19mm	MTP19	30	26	26	—	17

Federal Spec. U.S. GGG-W-660A ANSI B107.2

**6 Point Deep Length - Impact
Black Industrial Finish**

Hex Size	6 Point Part No.	Overall Length mm a	Drive End mm b	Hex End mm c	Taper Length mm d	Bolt Clearance mm e
8mm	MTPL8	65	19	12.5	13	7
9mm	MTPL9	65	19	14	13	7
10mm	MTPL10	65	19	15	13	8
11mm	MTPL11	65	19	17	13	9
12mm	MTPL12	65	19	19	—	10
13mm	MTPL13	65	19	19	—	11
14mm	MTPL14	65	20	20	—	12
15mm	MTPL15	65	22	22	—	13
16mm	MTPL16	65	24	24	—	14
17mm	MTPL17	65	24	24	—	15
18mm	MTPL18	65	25	25	—	16
19mm	MTPL19	65	26	26	—	17

Federal Spec. U.S. GGG-W-660A ANSI B107.2



**6 Point Universal Joint Socket - Impact
Black Industrial Finish**

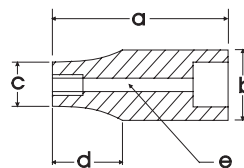
Hex Size	Part No.	Overall Length in. a	Drive End in. b	Hex End in. c
3/8"	PU120	2.11	0.93	0.59
7/16"	PU140	2.11	0.93	0.67
1/2"	PU160	2.11	0.93	0.74
9/16"	PU180	2.11	0.93	0.83
5/8"	PU200	2.11	0.93	0.91

Federal Spec. U.S. GGG-W-660A ANSI B107.2



Female Torx® Impact Sockets

Hex Size	Part No.	Overall Length in. a	Drive End in. b	Hex End in. c	Taper Length in. d	Bolt Clearance in. e
E10	24010	1.3	0.7	0.5	.57	0.96
E12	24012	1.3	0.7	0.6	.56	0.93
E14	24014	1.3	0.7	0.6	.53	0.87
E16	24016	1.3	0.7	0.7	—	0.83





P8T

No. P8T 8 Pieces 6 Point Standard SAE Impact Socket Set

Contains: 5/16", 3/8", 7/16", 1/2", 9/16", 5/8", 11/16", 3/4"
Includes socket rail # SB081209

No. PD387T 7 Pieces 6 Point Deep SAE Impact Socket Set

Contains: 3/8", 7/16", 1/2", 9/16", 5/8", 11/16", 3/4"
Includes socket rail # SB081209

No. 25058 8 Pieces 6 Point Deep SAE Impact Socket Set

Contains: 5/16", 3/8", 7/16", 1/2", 9/16", 5/8", 11/16", 3/4"
Includes socket rail # SB081209



29612

No. PM388T 8 Pieces 6 Point Standard Metric Impact Socket Set

Contains: 8, 9, 10, 11, 12, 13, 14, 15mm
Includes socket rail # SB081209

No. 29612 12 Pieces 6 Point Standard Metric Impact Socket Set

Contains: 8, 9, 10, 11, 12, 13, 14, 15, 16, 17, 18, 19mm
Includes socket rail # SB111212



PMD388T

No. PMD388T 8 Pieces 6 Point Deep Metric Impact Socket Set

Contains: 8, 9, 10, 11, 12, 13, 14, 15mm
Includes socket rail # SB081209

No. 29622 12 Pieces 6 Point Deep Metric Impact Socket Set

Contains: 8, 9, 10, 11, 12, 13, 14, 15, 16, 17, 18, 19mm
Includes socket rail # SB111212

**No. 25805 5 Pieces 6 Point
SAE Impact Universal Joint Socket Set**



Contains: 3/8", 7/16", 1/2", 9/16", 5/8"
Includes socket rail # SB061207



**No. 24510 10 Pieces
Female Torx® Impact Socket Set**



Contains: 1/4" Drive: E4, E5, E6, E7, E8
3/8" Drive: E10, E12, E14, E16
1/2" Drive: E18

Includes socket rail # SB070812



24510

**No. IMD208K 6 Pieces Impact Driver
and Attachments Set**

Part No.	Description
IMD206	3/8" sq. dr. impact driver
IMD207A	5/16" hex bit adapter
IMB21	No. 2 Phillips® 1 7/16" long
IMB22	No. 3 Phillips® 1 7/16" long
IMB23	5/16" Slotted 1 7/16" long
IMB24	3/8" Slotted 1 7/16" long





Reversible Ratchet

Part No.	Description	Length
8797	Chrome reversible ratchet, 20 tooth	10"
8798	Chrome reversible ratchet, 32 tooth	10"
8798B	Black reversible ratchet, 32 tooth	10"

Federal Spec. CDA 39-GP-12b U.S. GGG-W-641E ANSI B107.10M



Long Reversible Ratchet

Part No.	Description	Length
8797L	Chrome reversible ratchet, 20 tooth	15"
8798L	Chrome reversible ratchet, 32 tooth	15"
8798LB	Black reversible ratchet, 32 tooth	15"

Federal Spec. CDA 39-GP-12b U.S. GGG-W-641E ANSI B107.10M



Screwdriver Handle Ratchet

Part No.	Description	Length
31820	Chrome reversible ratchet, 20 tooth with florescent orange handle	11 1/4"



Flex Handle Ratchet

Part No.	Description	Length
8799F	40 tooth flex handle ratchet	14 1/2"



Linemans Ratchet

Part No.	Description	Length
8797HS	Linemans ratchet Chrome, 20 tooth	10"



Flex Handle

Part No.	Description	Length
653	Chrome flex handle	15"
653B	Black flex handle	15"
653L	Chrome flex handle	18"
653LB	Black flex handle	18"

Federal Spec. CDA 39-GP-12b U.S. GGG-W-641E ANSI B107.10M



Speeder

Part No.	Description	Length
686	Speeder	19 1/4"

Federal Spec. CDA 39-GP-12b U.S. GGG-W-641E ANSI B107.10M



Sliding T Handle

Part No.	Description	Length
699	Sliding "T" handle	11"

Federal Spec. CDA 39-GP-12b U.S. GGG-W-641E ANSI B107.10M



Hex Drive Extension

Part No.	Hex Male	Square Male	Length
79300	7/16"	1/2"	2 1/8"
79303	7/16"	1/2"	3"
79305	7/16"	1/2"	5"

Extensions

Part No.	Description	Length
718S	Chrome Extension	2"
718	Chrome Extension	5"
719	Chrome Extension	10"
715	Chrome Extension	15"
720	Chrome Extension	20"
718SW	Chrome Wobble Extension	2"
718W	Chrome Wobble Extension	5"
719W	Chrome Wobble Extension	10"

Federal Spec. CDA 39-GP-12b U.S. GGG-W-641E ANSI B107.10M



No. 7183S 3 Pieces Chrome Extension Set

Part No.	Length
718	5"
719	10"
715	15"



No. 12003S 3 Pieces Wobble Extension Set

Part No.	Length
718SW	2"
718W	5"
719W	10"



Universal Joint

Part No.	Description	Length
709	Universal Joint	2 1/2"

Federal Spec. CDA 39-GP-12b U.S. GGG-W-641E ANSI B107.10M



Ratchet Adapter

Part No.	Description	Length
797	Reversible Ratchet Adapter	2 1/4"



Adapter - Chrome

Part No.	Description	Female	Male	Length
4206*	Adapter	1/2"	3/8"	1 21/32"
4298	Adapter	1/2"	3/4"	1 3/4"

* Due to the nature of the product this item is not warranted.
Federal Spec. U.S. GGG-W-641E ANSI Spec. B107.10M





2591A



19



Spark Plug Socket

Part No.	Description	Length
LD20R	Hex size: 5/8", Chrome	2 1/2"
LD26R	Hex size: 13/16", Chrome	3"

Screwdriver Socket

Part No.	Tip Size	Overall Length	Bit Length	Replacement Bit Part No.
734	1/2 x .075	4 3/16"	2 9/16"	734-BIT

Drag Link Socket

Part No.	Description	Length
405A	.109 x 3/4, Chrome	1 9/16"
405	.150 x 15/16, Chrome	1 9/16"
405B	.150 x 1 3/16, Chrome	1 9/16"

Penta Socket

Part No.	Description	Length
31980	For Utilities - 5 Sided, Chrome	1 1/4"

Stud Remover

Part No.	Description	Length
2591A	1/2" Dr. 1/4" to 9/16"	2"
19	1/2" Dr. 1/4" to 3/4"	2"

Impact Extensions - Black Finish

Part No.	Description	Square		Length
		Female	Male	
P4-105A	Impact Extension	1/2"	1/2"	5"
P4-110A	Impact Extension	1/2"	1/2"	10"

Universal Joint - Impact - Black Finish

Part No.	Description	Square		Length
		Female	Male	
P4-140A*	Universal Joint	1/2"	1/2"	2 11/32"

Adapters - Impact - Black Finish

Part No.	Description	Square		Length
		Female	Male	
PA4-2A*	Adapter	1/2"	3/8"	1 1/2"
PA4-6*	Adapter	1/2"	3/4"	1 7/8"
PA6-4*	Adapter	3/4"	1/2"	2 3/16"

* Due to the nature of the product these items are not warranted.

6 & 12 Point Standard Length

Hex Size	6 Point Part No.	12 Point Part No.	Overall Length in. a	Drive End in. b	Hex End in. c	Taper Length in. d	Bolt Clearance in. e
3/8"	406	1406	1.50	0.87	0.59	0.35	0.32
7/16"	407	1407	1.50	0.87	0.67	0.47	0.35
1/2"	408	1408	1.50	0.87	0.75	0.47	0.43
9/16"	409	1409	1.50	0.94	0.83	0.47	0.32
5/8"	410	1410	1.50	0.94	0.91	0.47	0.49
11/16"	411	1411	1.50	0.94	0.94	—	0.58
3/4"	412	1412	1.50	1.02	1.02	—	0.69
13/16"	413	1413	1.50	1.14	1.14	—	0.70
7/8"	414	1414	1.50	1.18	1.18	—	0.76
15/16"	415	1415	1.75	1.26	1.26	—	0.86
1"	432	1432	1.75	1.38	1.38	—	0.90
1 1/16"	433	1433	2.00	1.42	1.42	—	0.98
1 1/8"	434	1434	2.00	1.54	1.54	—	1.05
1 3/16"	435	1435	2.00	1.57	1.57	—	1.10
1 1/4"	436	1436	2.00	1.65	1.65	—	1.18
1 5/16"	437	1437	2.00	1.77	1.77	—	—
1 3/8"	438	1438	2.00	1.85	1.85	—	1.27
1 7/16"	439	1439	2.00	1.93	1.93	—	1.11
1 1/2"	440	1440	2.00	1.97	1.97	—	—

Federal Spec. CDA 39-GP-12b U.S. GGG-W-641E. ANSI B107.1.



6 & 12 Point Deep Length

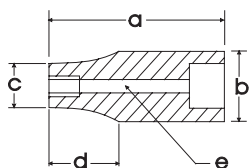
Hex Size	6 Point Part No.	12 Point Part No.	Overall Length in. a	Drive End in. b	Hex End in. c	Taper Length in. d	Bolt Clearance in. e
3/8"	LDS12	LD12	3.07	0.87	0.59	0.55	0.32
7/16"	LDS14	LD14	3.07	0.87	0.67	0.55	0.37
1/2"	LDS16	LD16	3.07	0.87	0.75	0.55	0.39
9/16"	LDS18	LD18	3.07	0.94	0.83	0.67	0.48
5/8"	LDS20	LD20	3.07	0.94	0.91	0.67	0.50
11/16"	LDS22	LD22	3.07	0.94	0.94	0.67	0.61
3/4"	LDS24	LD24	3.07	1.02	1.02	0.75	0.68
13/16"	LDS26	LD26	3.07	1.14	1.14	0.94	0.72
7/8"	LDS28	LD28	3.07	1.18	1.18	0.94	0.79
15/16"	LDS30	LD30	3.07	1.26	1.26	0.94	0.85
1"	LDS32	LD32	3.07	1.38	1.38	0.94	0.90
1 1/16"	LDS34	LD34	3.07	1.42	1.42	0.94	0.79
1 1/8"	LDS36	LD36	3.07	1.54	1.54	0.94	1.08
1 3/16"	LDS38	LD38	3.07	1.57	1.57	0.94	1.11
1 1/4"	LDS40	LD40	3.07	1.65	1.65	0.94	1.20
1 5/16"	LDS42	LD42	3.07	1.77	1.77	0.94	—
1 3/8"	LDS44	LD44	3.07	1.85	1.85	0.94	1.04
1 7/16"	LDS46	LD46	3.07	1.93	1.93	0.94	—
1 1/2"	LDS48	LD48	3.07	1.97	1.97	0.94	1.42

Federal Spec. CDA 39-GP-12b U.S. GGG-W-641E. ANSI B107.1.



Note: NOT FOR IMPACT USE. All items on this page are for hand use only.

6 & 12 Point Standard Length



Hex Size	6 Point Part No.	12 Point Part No.	Overall Length mm a	Drive End mm b	Hex End mm c	Taper Length mm d	Bolt Clearance mm e
10mm	M1210H	M1210	38	23	15	19	7
11mm	M1211H	M1211	38	23	16	19	8
12mm	M1212H	M1212	38	23	18	19	9
13mm	M1213H	M1213	38	23	19	19	9
14mm	M1214H	M1214	38	23	21	19	10
15mm	M1215H	M1215	38	23	22	19	11
16mm	M1216H	M1216	38	23	23	—	12
17mm	M1217H	M1217	38	24	24	—	12
18mm	M1218H	M1218	38	25	25	—	13
19mm	M1219H	M1219	38	27	27	—	13
20mm	M1220H	M1220	38	28	28	—	13
21mm	M1221H	M1221	38	29	29	—	15
22mm	M1222H	M1222	38	30	30	—	16
23mm	M1223H	M1223	38	32	32	—	16
24mm	M1224H	M1224	44	33	33	—	16
25mm	M1225H	M1225	44	35	35	—	18
26mm	M1226H	M1226	44	36	36	—	18
27mm	M1227H	M1227	44	36	36	—	19
28mm	M1228H	M1228	44	38	38	—	20
29mm	M1229H	—	44	40	40	—	20
30mm	M1230H	M1230	44	41	41	—	20
31mm	M1231H	—	44	43	43	—	20
32mm	M1232H	M1232	51	44	44	—	20
36mm	M1236H	M1236	57	49	49	—	23

Federal Spec. CDA 39-GP-12b U.S. GGG-W-641E ANSI B107.1

6 & 12 Point Deep Length



Hex Size	6 Point Part No.	12 Point Part No.	Overall Length mm a	Drive End mm b	Hex End mm c	Taper Length mm d	Bolt Clearance mm e
10mm	MD1210H	MD1210	83	23	14	19	7
11mm	—	MD1211	83	23	17	19	8
12mm	MD1212H	MD1212	83	23	17	19	9
13mm	MD1213H	MD1213	83	23	19	19	9
14mm	MD1214H	MD1214	83	23	21	19	10
15mm	MD1215H	MD1215	83	23	22	19	11
16mm	MD1216H	MD1216	83	23	23	—	12
17mm	MD1217H	MD1217	83	24	24	—	12
18mm	MD1218H	MD1218	83	25	25	—	13
19mm	MD1219H	MD1219	83	27	27	—	13
20mm	MD1220H	MD1220	83	28	28	—	13
21mm	MD1221H	MD1221	83	29	29	—	15
22mm	MD1222H	MD1222	83	30	30	—	16
23mm	MD1223H	MD1223	83	31	31	—	16
24mm	MD1224H	MD1224	83	33	33	—	16
25mm	MD1225H	MD1225	83	35	35	—	18
26mm	MD1226H	MD1226	83	36	36	—	18
27mm	MD1227H	MD1227	83	36	36	—	20
28mm	MD1228H	—	83	38	38	—	19
29mm	MD1229H	—	83	39	39	—	20
30mm	MD1230H	—	83	40	40	—	21

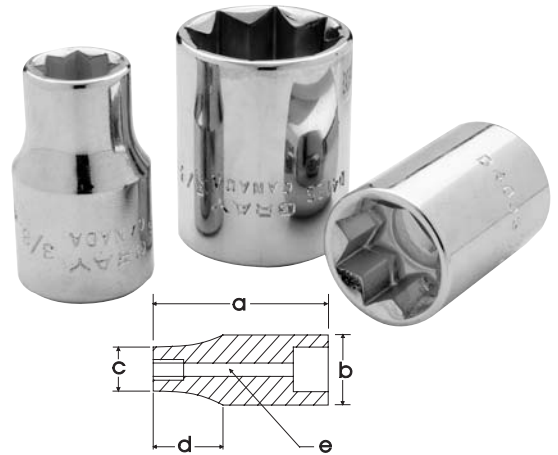
Federal Spec. CDA 39-GP-12M U.S. GGG-W-641E. ANSI B107.5.

Note: NOT FOR IMPACT USE. All items on this page are for hand use only.

Double Square - Standard Length

Hex Size	8 Point Part No.	Overall Length in a	Drive End in b	Hex End in c	Taper Length in d	Bolt Clearance in e
3/8"	D406S	1.50	0.9	0.69	0.68	0.28
7/16"	D407S	1.50	0.9	0.82	0.68	0.28
1/2"	D408S	1.50	0.9	0.90	—	0.34
9/16"	D409S	1.50	0.98	0.98	—	0.40
5/8"	D410S	1.50	1.12	1.12	—	0.46
11/16"	D411S	1.50	1.25	1.25	—	0.46
3/4"	D412S	1.50	1.30	1.30	—	0.53

Federal Spec. CDA 39-GP-12b U.S. GGG-W-641E. ANSI B107.1.



Hex Head Sockets - Standard Length

Hex Size	Part No.	Overall Length, in.	Replacement Bit Part No.	Replacement Bit Length
1/4"	DW8L	3.25	78416	1.69
5/16"	DW10L	3.25	78420	1.69
3/8"	DW12L	3.25	78424	1.69
7/16"	DW14L	3.25	78428	1.69
1/2"	DW16L	3.75	78432	1.95
9/16"	DW18L	3.75	78436	1.95
5/8"	DW20L	4.00	78440	2.05
3/4"	DW24L	4.00	78448	2.05

Federal Spec. CDA 39-GP-12B. U.S. GGG-W-641E. ANSI B107.1.



Hex Head Sockets - Extra Long

Hex Size	Part No.	Overall Length, in.	Replacement Bit Part No.	Replacement Bit Length
1/4"	DW8XL	5.0	78516	3.45
5/16"	DW10XL	5.0	78520	3.45
3/8"	DW12XL	5.0	78524	3.45
7/16"	DW14XL	5.0	78528	3.45
1/2"	DW16XL	5.5	78532	3.95
9/16"	DW18XL	5.5	78536	3.95
5/8"	DW20XL	6.0	78540	4.00
3/4"	DW24XL	6.0	78548	4.00

Federal Spec. CDA 39-GP-12B. U.S. GGG-W-641E. ANSI B107.1.



Hex Head Sockets - Standard Length

Hex Size	Part No.	Overall Length, mm	Replacement Bit Part No.	Replacement Bit Length
6mm	MDW6L	81	78606	43
8mm	MDW8L	81	78608	43
10mm	MDW10L	81	78610	43
12mm	MDW12L	94	78612	50
14mm	MDW14L	94	78614	50
17mm	MDW17L	101	78617	50
19mm	MDW19L	101	78619	50

Federal Spec. CDA 39-GP-12M. U.S. GGG-W-641E. ANSI B107.5.





Hex Head Sockets - Extra Long

Hex Size	Part No.	Overall Length, in.	Replacement Bit Part No.	Bit Length mm
6mm	MDW6XL	128	78706	95
8mm	MDW8XL	128	78708	95
10mm	MDW10XL	128	78710	95
12mm	MDW12XL	140	78712	98
14mm	MDW14XL	140	78714	98
17mm	MDW17XL	145	78717	98
19mm	MDW19XL	145	78719	98

Federal Spec. CDA 39-GP-12M. U.S. GGG-W-641E. ANSI B107.5.



Torx® Head Sockets

Torx® Size	Part No.	Overall Length, in.	Replacement Bit Part No.	Replacement Bit Length, in.
T27	TX627	3	77927	1.50
T30	TX630	3	77930	1.50
T40	TX640	3	77940	1.50
T45	TX645	3	77945	1.50
T50	TX650	3	77950	1.50
T55	TX655	3	77955	1.50
T60	TX660	3	77960	1.50

Federal Spec. CDA 39-GP-12B. U.S. GGG-W-641E. ANSI B107.1.



35012

No. 35012 12 Pieces 6 Point Standard SAE Socket Set

Contains: 7/16", 1/2", 9/16", 5/8", 11/16", 3/4", 13/16", 7/8", 15/16", 1", 1 1/16", 1 1/8"

Includes socket rail # SB191611

No. 35015 15 Pieces 6 Point Standard SAE Socket Set

Contains: 3/8", 7/16", 1/2", 9/16", 5/8", 11/16", 3/4", 13/16", 7/8", 15/16", 1", 1 1/16", 1 1/8", 1 3/16", 1 1/4"

Includes socket rail # SB191615

No. 35020 19 Pieces 6 Point Standard SAE Socket Set

Contains: 3/8", 7/16", 1/2", 9/16", 5/8", 11/16", 3/4", 13/16", 7/8", 15/16", 1", 1 1/16", 1 1/8", 1 3/16", 1 1/4", 1 5/16", 1 3/8", 1 7/16", 1 1/2"

Includes 2 socket rails # SB151611

**No. 35212 12 Pieces 6 Point
Deep SAE Socket Set**

Contains: 7/16", 1/2", 9/16", 5/8", 11/16", 3/4", 13/16", 7/8", 15/16", 1", 1 1/16",
1 1/8"

Includes socket rail # SB191611



35212

**No. 35215 15 Pieces 6 Point
Deep SAE Socket Set**

Contains: 3/8", 7/16", 1/2", 9/16", 5/8", 11/16", 3/4", 13/16", 7/8", 15/16", 1",
1 1/16", 1 1/8", 1 3/16", 1 1/4"

Includes socket rail # SB191615

**No. 35112 12 Pieces 12 Point
Standard SAE Socket Set**

Contains: 7/16", 1/2", 9/16", 5/8", 11/16", 3/4", 13/16", 7/8", 15/16", 1", 1 1/16",
1 1/8"

Includes socket rail # SB191611



35112

**No. 35115 15 Pieces 12 Point
Standard SAE Socket Set**

Contains: 3/8", 7/16", 1/2", 9/16", 5/8", 11/16", 3/4", 13/16", 7/8", 15/16", 1",
1 1/16", 1 1/8", 1 3/16", 1 1/4"

Includes socket rail # SB191615

**No. 35120 19 Pieces 12 Point
Standard SAE Socket Set**

Contains: 3/8", 7/16", 1/2", 9/16", 5/8", 11/16", 3/4", 13/16", 7/8", 15/16", 1",
1 1/16", 1 1/8", 1 3/16", 1 1/4", 1 5/16", 1 3/8", 1 7/16", 1 1/2"

Includes 2 socket rails # SB151611

**No. 35312 12 Pieces 12 Point
Deep SAE Socket Set**

Contains: 7/16", 1/2", 9/16", 5/8", 11/16", 3/4", 13/16", 7/8", 15/16", 1", 1 1/16",
1 1/8"

Includes socket rail # SB191611



35312

**No. 35315 15 Pieces 12 Point
Deep SAE Socket Set**

Contains: 3/8", 7/16", 1/2", 9/16", 5/8", 11/16", 3/4", 13/16", 7/8", 15/16", 1",
1 1/16", 1 1/8", 1 3/16", 1 1/4"

Includes socket rail # SB191615



39012

**No. 39012 12 Pieces 6 Point
Standard Metric Socket Set**

Contains: 10, 11, 12, 13, 14, 15, 16, 17, 18, 19, 20, 21mm
Includes socket rail # SB191611

**No. 39019 19 Pieces 6 Point
Standard Metric Socket Set**

Contains: 10, 11, 12, 13, 14, 15, 16, 17, 18, 19, 20, 21, 22,
23, 24, 25, 26, 27, 28mm
Includes 2 socket rails # SB151611



39218

**No. 39218 18 Pieces 6 Point
Deep Metric Socket Set**

Contains: 10, 12, 13, 14, 15, 16, 17, 18, 19, 20, 21, 22, 23,
24, 25, 26, 27, 28mm
Includes 2 socket rails # SB151611



39112

**No. 39112 12 Pieces 12 Point
Standard Metric Socket Set**

Contains: 10, 11, 12, 13, 14, 15, 16, 17, 18, 19, 20, 21mm
Includes socket rail # SB191611

**No. 39119 19 Pieces 12 Point
Standard Metric Socket Set**

Contains: 10, 11, 12, 13, 14, 15, 16, 17, 18, 19, 20, 21, 22,
23, 24, 25, 26, 27, 28mm
Includes 2 socket rails # SB151611



39318

**No. 39318 18 Pieces 12 Point
Deep Metric Socket Set**

Contains: 10, 11, 12, 13, 14, 15, 16, 17, 18, 19, 20, 21, 22,
23, 24, 25, 26, 27mm
Includes 2 socket rails # SB151611

**No. 35605 5 Pieces
Hex Head SAE Socket Set**

Contains: 5/16", 3/8", 7/16", 1/2", 9/16"
Includes socket rail # SB071607

**No. 35606 6 Pieces
Hex Head SAE Socket Set**

Contains: 1/4", 5/16", 3/8", 7/16", 1/2", 9/16"
Includes socket rail # SB071607

**No. 35607 7 Pieces
Hex Head SAE Socket Set**

Contains: 5/16", 3/8", 7/16", 1/2", 9/16", 5/8", 3/4"
Includes socket rail # SB091608

**No. DW24LS 8 Pieces
Hex Head SAE Socket Set**

Contains: 1/4", 5/16", 3/8", 7/16", 1/2", 9/16", 5/8", 3/4"
Includes socket rail # SB091608

**No. 35616 6 Pieces
Extra Long SAE Hex Head SAE Socket Set**

Contains: 1/4", 5/16", 3/8", 7/16", 1/2", 9/16"
Includes socket rail # SB071607

**No. DW24XLS 8 Pieces
Extra Long SAE Hex Head SAE Socket Set**

Contains: 1/4", 5/16", 3/8", 7/16", 1/2", 9/16", 5/8", 3/4"
Includes socket rail # SB091608

**No. MDW7LCP 7 Pieces
Hex Head Metric Socket Set**

Contains: 6, 8, 10, 12, 14, 17, 19mm
Includes socket rail # SB091608



35607



DW24LS



35616



MDW7LCP



**No. MDW19XLS 7 Pieces
Extra Long - Metric
Hex Head Socket Set**

Contains: 6, 8, 10, 12, 14, 17, 19mm

Includes socket rail # SB071607



**No. 35705 5 Pieces
Torx® Head Socket Set**

Contains: T27, T30, T40, T45, T50

Includes socket rail # SB071607

**No. 35707 7 Pieces
Torx® Head Socket Set**

Contains: T27, T30, T40, T45, T50, T55, T60

Includes socket rail # SB091608



**No. 30805 5 Pieces
Chrome Ratchet & Attachment Set**

Includes: Reversible Ratchet, Flex Handle, U-Joint, 5" Extension, 10" Extension, Metal Box # 9101



**No. 38017 17 Pieces 6 Point
Standard SAE Socket Set**

Contains: 7/16", 1/2", 9/16", 5/8", 11/16", 3/4", 13/16", 7/8", 15/16", 1", 1 1/16", 1 1/8" on socket rail # SB151611

Includes: Reversible Ratchet, Flex Handle, U-Joint, 5" Extension, 10" Extension, Metal Box # 9101

**No. 38020 20 Pieces 6 Point
Standard SAE Socket Set**

Contains: 3/8", 7/16", 1/2", 9/16", 5/8", 11/16", 3/4", 13/16", 7/8",
15/16", 1", 1 1/16", 1 1/8", 1 3/16", 1 1/4"

on socket rail # SB191615

Includes: Reversible Ratchet, Flex Handle, Universal Joint,
5" Extension, 10" Extension, Metal Box # 9101

**No. 38217 17 Pieces 6 Point
Deep SAE Socket Set**

Contains: 7/16", 1/2", 9/16", 5/8", 11/16", 3/4", 13/16", 7/8",
15/16", 1", 1 1/16", 1 1/8"

on socket rail # SB151611

Includes: Reversible Ratchet, Flex Handle, Universal Joint,
5" Extension, 10" Extension, Metal Box # 9101

**No. 38220 20 Pieces 6 Point
Deep SAE Socket Set**

Contains: 3/8", 7/16", 1/2", 9/16", 5/8", 11/16", 3/4", 13/16", 7/8",
15/16", 1", 1 1/16", 1 1/8", 1 3/16", 1 1/4"

on socket rail # SB191615

Includes: Reversible Ratchet, Flex Handle, Universal Joint,
5" Extension, 10" Extension, Metal Box # 9101





No. 38117 17 Pieces 12 Point Standard SAE Socket Set

Contains: 7/16", 1/2", 9/16", 5/8", 11/16", 3/4", 13/16", 7/8", 15/16", 1", 1 1/16", 1 1/8"
on socket rail # SB151611

Includes: Reversible Ratchet, Flex Handle, Universal Joint, 5" Extension, 10" Extension, Metal Box # 9101



No. 38120 20 Pieces 12 Point Standard SAE Socket Set

Contains: 3/8", 7/16", 1/2", 9/16", 5/8", 11/16", 3/4", 13/16", 7/8", 15/16", 1", 1 1/16", 1 1/8", 1 3/16", 1 1/4"
on socket rail # SB191615

Includes: Reversible Ratchet, Flex Handle, Universal Joint, 5" Extension, 10" Extension, Metal Box # 9101



No. 38317 17 Pieces 12 Point Deep SAE Socket Set

Contains: 7/16", 1/2", 9/16", 5/8", 11/16", 3/4", 13/16", 7/8", 15/16", 1", 1 1/16", 1 1/8"
on socket rail # SB151611

Includes: Reversible Ratchet, Flex Handle, Universal Joint, 5" Extension, 10" Extension, Metal Box # 9101



No. 38320 20 Pieces 12 Point Deep SAE Socket Set

Contains: 3/8", 7/16", 1/2", 9/16", 5/8", 11/16", 3/4", 13/16", 7/8", 15/16", 1", 1 1/16", 1 1/8", 1 3/16", 1 1/4"
on socket rail # SB191615

Includes: Reversible Ratchet, Flex Handle, Universal Joint, 5" Extension, 10" Extension, Metal Box # 9101

**No. 39017 17 Pieces 6 Point
Standard Metric Socket Set**

Contains: 10, 11, 12, 13, 14, 15, 16, 17, 18, 19, 20, 21mm
on socket rail # SB151611

Includes: Reversible Ratchet, Flex Handle, Universal Joint,
5" Extension, 10" Extension, Metal Box # 9101



**No. 35038SH 38 Pieces 6 Point
SAE & Metric Socket & Attachment Set**

Contains: 3/8", 7/16", 1/2", 9/16", 5/8", 11/16", 3/4", 13/16", 7/8",
15/16", 1", 1 1/16", 1 1/8", 1 1/4"
10, 11, 12, 13, 14, 15, 16, 17, 18, 19, 20, 21, 22, 23,
24, 27, 30, 32mm

Includes: Reversible Ratchet, 15" Flexible Handle, U Joint,
2" Extension, 5" Extension, 10" Extension, Blow Molded Case
93012

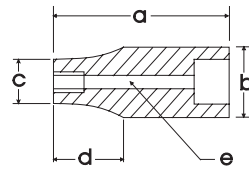


**No. 35038DH 38 Pieces 12 Point
SAE & Metric Socket & Attachment Set**

Contains: 3/8", 7/16", 1/2", 9/16", 5/8", 11/16", 3/4", 13/16", 7/8",
15/16", 1", 1 1/16", 1 1/4"
10, 11, 12, 13, 14, 15, 16, 17, 18, 19, 20, 21, 22, 23,
24, 27, 30, 32mm

Includes: Reversible Ratchet, 15" Flexible Handle, U Joint,
2" Extension, 5" Extension, 10" Extension, Blow Molded Case
93012

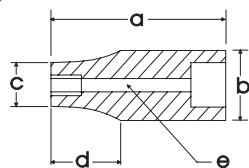




6 Point Standard Length - Impact Black Industrial Finish

Hex Size	6 Point Part No.	Overall Length in a	Drive End in b	Hex End in c	Taper Length in d	Bolt Clearance in e
3/8"	P2406	1.5	0.87	0.63	0.47	0.31
7/16"	P2407	1.5	0.87	0.71	0.33	0.35
1/2"	P2408	1.5	0.87	0.79	0.19	0.43
9/16"	P2409	1.5	0.94	0.87	0.19	0.47
5/8"	P2410	1.5	0.98	0.98	—	0.55
11/16"	P2411	1.5	1.02	1.02	—	0.63
3/4"	P2412	1.5	1.1	1.1	—	0.67
13/16"	P2413	1.5	1.18	1.18	—	0.71
7/8"	P2414	1.5	1.26	1.26	—	0.79
15/16"	P2415	1.5	1.34	1.34	—	0.87
1"	P2432	1.5	1.42	1.42	—	0.91
1 1/16"	P2433	1.57	1.5	1.5	—	0.98
1 1/8"	P2434	1.57	1.57	1.57	—	1.02
1 3/16"	P2435	1.57	1.65	1.65	—	1.1
1 1/4"	P2436	1.57	1.73	1.73	—	1.18
1 5/16"	P2437	1.69	1.77	1.77	—	1.22
1 3/8"	P2438	1.97	1.91	1.91	—	1.3
1 7/16"	P2439	1.97	1.99	1.99	—	1.34
1 1/2"	P2440	1.97	2.07	2.07	—	1.42

Federal Spec. CDA 39-GP-12M U.S. GGG-W-660A ANSI B107.1



6 Point Deep Length - Impact Black Industrial Finish

Hex Size	6 Point Part No.	Overall Length in a	Drive End in b	Hex End in c	Taper Length in d	Bolt Clearance in e
3/8"	PL2406	3.07	0.87	0.63	0.67	0.28
7/16"	PL2407	3.07	0.87	0.71	0.67	0.35
1/2"	PL2408	3.07	0.87	0.79	0.67	0.39
9/16"	PL2409	3.07	0.94	0.87	0.67	0.47
5/8"	PL2410	3.07	0.94	0.94	—	0.51
11/16"	PL2411	3.07	1.02	1.02	—	0.59
3/4"	PL2412	3.07	1.1	1.1	—	0.67
13/16"	PL2413	3.07	1.18	1.18	—	0.75
7/8"	PL2414	3.07	1.26	1.26	—	0.79
15/16"	PL2415	3.07	1.34	1.34	—	0.87
1"	PL2432	3.07	1.42	1.42	—	0.91
1 1/16"	PL2433	3.07	1.5	1.5	—	0.98
1 1/8"	PL2434	3.07	1.57	1.57	—	1.02
1 3/16"	PL2435	3.07	1.65	1.65	—	1.1
1 1/4"	PL2436	3.07	1.73	1.73	—	1.8
1 5/16"	PL2437	3.07	1.77	1.77	—	1.22
1 3/8"	PL2438	3.07	1.91	1.91	—	1.3

Federal Spec. CDA 39-GP-12M U.S. GGG-W-660A ANSI B107.2

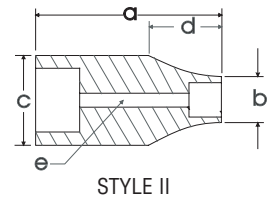
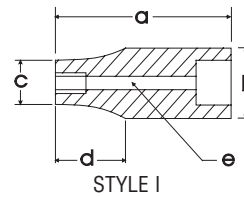
**12 Point Standard Length - Impact
Black Industrial Finish**

Hex Size	12 Point Part No.	Overall Length in a	Drive End in b	Hex End in c	Taper Length in d	Bolt Clearance in e	
3/8"	P2406DH	1.50	0.94	0.63	0.47	0.32	Style I
7/16"	P2407DH	1.50	0.94	0.71	0.47	0.35	
1/2"	P2408DH	1.50	0.94	0.79	0.47	0.43	
9/16"	P2409DH	1.50	0.94	0.87	0.47	0.46	
5/8"	P2410DH	1.50	0.94	0.94	0.47	0.49	
1 1/16"	P2411DH	1.50	1.02	1.02	0.51	0.59	
3/4"	P2412DH	1.50	1.10	1.10	0.51	0.73	
13/16"	P2413DH	1.50	1.18	1.18	0.55	0.71	
7/8"	P2414DH	1.50	1.26	1.26	0.59	0.80	
15/16"	P2415DH	1.77	1.34	1.34	0.79	0.86	
1"	P2432DH	1.77	1.42	1.42	0.79	0.90	
1 1/16"	P2433DH	1.97	1.50	1.50	0.94	0.98	
1 1/8"	P2434DH	1.97	1.50	1.57	0.94	1.05	
13/16"	P2435DH	1.97	1.50	1.65	0.94	1.10	
1 1/4"	P2436DH	1.97	1.50	1.73	0.94	1.18	
1 5/16"	P2437DH	1.97	1.50	1.77	0.94	—	
1 3/8"	P2438DH	1.97	1.50	1.85	0.94	—	
1 7/16"	P2439DH	1.97	1.50	1.91	0.94	—	
1 1/2"	P2440DH	1.97	1.50	1.99	0.94	—	

NEW



ASME 107.2 - 1995

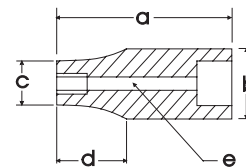


**6 Point Regular Length - Impact
Black Industrial Finish**

Hex Size	6 Point Part No.	Overall Length mm a	Drive End mm b	Hex End mm c	Taper Length mm d	Bolt Clearance mm e
8mm	MP08H	38	22	15	14	6
9mm	MP09H	38	22	15	14	7
10mm	MP10H	38	22	17	10	8
11mm	MP11H	38	22	18	8	9
12mm	MP12H	38	22	19	7	10
13mm	MP13H	38	24	20	8	11
14mm	MP14H	38	24	22	5	12
15mm	MP15H	38	25	23	5	13
16mm	MP16H	38	25	25	—	14
17mm	MP17H	38	26	26	—	15
18mm	MP18H	38	26	26	—	16
19mm	MP19H	38	28	28	—	17
20mm	MP20H	38	30	30	—	18
21mm	MP21H	38	30	30	—	19
22mm	MP22H	38	32	32	—	20
23mm	MP23H	38	32	32	—	21
24mm	MP24H	38	34	34	—	22
25mm	MP25H	38	36	36	—	23
26mm	MP26H	38	36	36	—	24
27mm	MP27H	40	38	38	—	25
28mm	MP28H	40	40	40	—	26
29mm	MP29H	40	40	40	—	27
30mm	MP30H	40	42	42	—	28
31mm	MP31H	40	43	43	—	29
32mm	MP32H	40	44	44	—	30
36mm	MP36H	50	48.5	48.5	—	34



ASME 107.2 - 1995





6 Point Deep Length - Impact Black Industrial Finish

Hex Size	6 Point Part No.	Overall Length mm a	Drive End mm b	Hex End mm c	Taper Length mm d	Bolt Clearance mm e
8mm	MPD08H	78	22	15	17	6
9mm	MPD09H	78	22	15	17	7
10mm	MPD10H	78	22	17	17	8
11mm	MPD11H	78	22	18	17	9
12mm	MPD12H	78	22	19	17	10
13mm	MPD13H	78	24	20	17	11
14mm	MPD14H	78	24	22	17	12
15mm	MPD15H	78	24	24	—	13
16mm	MPD16H	78	24	24	—	14
17mm	MPD17H	78	26	26	—	15
18mm	MPD18H	78	26	26	—	16
19mm	MPD19H	78	28	28	—	17
20mm	MPD20H	78	30	30	—	18
21mm	MPD21H	78	30	30	—	19
22mm	MPD22H	78	32	32	—	20
23mm	MPD23H	78	32	32	—	21
24mm	MPD24H	78	34	34	—	22
27mm	MPD27H	78	38	38	—	25
30mm	MPD30H	78	42	42	—	28
36mm	MPD36H	78	48.5	48.5	—	34



6 Point Universal Joint Socket - Impact Black Industrial Finish

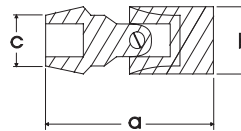
Hex Size	6 Point Part No.	Overall Length in a	Drive End in b	Hex End in c
7/16"	PHU14	2.56	1.1	0.59
1/2"	PHU16	2.56	1.1	0.67
9/16"	PHU18	2.56	1.1	0.75
5/8"	PHU20	2.56	1.1	0.87
11/16"	PHU22	2.56	1.25	0.91
3/4"	PHU24	2.56	1.25	1.02
13/16"	PHU26	2.56	1.25	1.10
7/8"	PHU28	2.56	1.25	1.18
15/16"	PHU30	2.56	1.25	1.26
1"	PHU32	2.56	1.25	1.34

Federal Spec. CDA 39-GP-12M U.S. GGG-W-660A ANSI B107.2

**6 Point Deep Universal Joint Socket - Impact
Black Industrial Finish**

Hex Size	6 Point Part No.	Overall Length in a	Drive End in b	Hex End in c
3/8"	PHU12L	3.50	1.10	0.59
7/16"	PHU14L	3.50	1.10	0.67
1/2"	PHU16L	3.50	1.10	0.75
9/16"	PHU18L	3.50	1.10	0.87
5/8"	PHU20L	3.50	1.10	0.91
11/16"	PHU22L	3.50	1.50	1.02
3/4"	PHU24L	3.50	1.50	1.10
13/16"	PHU26L	3.50	1.50	1.18
7/8"	PHU28L	3.50	1.50	1.26
15/16"	PHU30L	3.50	1.50	1.34

ASME 107.2 - 1995

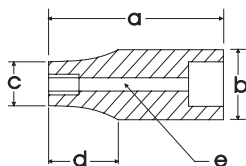


**6 Point Deep Universal Joint Socket - Impact
Black Industrial Finish**

Hex Size	6 Point Part No.	Overall Length mm a	Drive End mm b	Hex End mm c
10 mm	PHUM10L	89	28	15
11 mm	PHUM11L	89	28	17
12 mm	PHUM12L	89	28	19
13 mm	PHUM13L	89	28	20
14 mm	PHUM14L	89	28	22
15 mm	PHUM15L	89	28	23
16 mm	PHUM16L	89	28	23
17 mm	PHUM17L	89	32	26
18 mm	PHUM18L	89	32	26
19 mm	PHUM19L	89	32	28
20 mm	PHUM20L	89	32	30
21 mm	PHUM21L	89	32	30
22 mm	PHUM22L	89	32	32
23 mm	PHUM23L	89	32	32
24 mm	PHUM24L	89	32	34

ASME 107.2 - 1995





Female Torx® Impact Socket

Size	Part No.	Overall Length in a	Drive End in b	Hex End in c	Taper Length in d	Bolt Clearance in e
E18	34018	1.5	1.0	0.8	.68	1.0

Double Square Standard Length - Impact Black Industrial Finish

Size	8 Point Part No.	Overall Length in a	Drive End in b	Hex End in c	Taper Length in d	Bolt Clearance in e
3/8"	P4-812	1.5	0.87	0.75	0.60	0.31
7/16"	P4-814	1.5	0.94	0.83	0.60	0.35
1/2"	P4-816	1.5	0.94	0.94	0.60	0.43
9/16"	P4-818	1.5	1.02	1.02	—	0.47
5/8"	P4-820	1.5	1.1	1.1	—	0.55
11/16"	P4-822	1.5	1.18	1.18	—	0.63
3/4"	P4-824	1.5	1.34	1.34	—	0.67
13/16"	P4-826	1.5	1.42	1.42	—	0.75
7/8"	P4-828	1.5	1.5	1.5	—	0.75
15/16"	P4-830	1.77	1.5	1.65	—	0.91
1"	P4-832	1.77	1.5	1.73	—	0.91

Federal Spec. CDA 39-GP-12M U.S. GGG-W-660A ANSI B107.2

No. P6T 6 Pieces 6 Point Standard SAE Impact Socket Set

Contains: 1/2", 9/16", 5/8", 11/16", 3/4", 13/16"

Includes socket rail # SB091608



P11T

No. P11T 11 Pieces 6 Point Standard SAE Impact Socket Set

Contains: 3/8", 7/16", 1/2", 9/16", 5/8", 11/16", 3/4", 13/16", 7/8", 15/16", 1"

Includes socket rail # SB151611



35064

No. 35064 14 Pieces 6 Point Standard SAE Impact Socket Set

Contains: 3/8", 7/16", 1/2", 9/16", 5/8", 11/16", 3/4", 13/16", 7/8", 15/16", 1", 1 1/16", 1 1/8", 1 1/4"

Includes socket rail # SB191615

No. 35066 16 Pieces 6 Point Standard SAE Impact Socket Set

Contains: 3/8", 7/16", 1/2", 9/16", 5/8", 11/16", 3/4", 13/16", 7/8", 15/16", 1", 1 1/16", 1 1/8", 1 3/16", 1 1/4", 1 5/16"

Includes socket rail # SB151611

**No. PL8HT 8 Pieces 6 Point
Deep SAE Impact Socket Set**

Contains: 1/2", 9/16", 5/8", 11/16", 3/4", 13/16", 7/8", 15/16"
Includes socket rail # SB111609



PL8HT

**No. PL11T 11 Pieces 6 Point
Deep SAE Impact Socket Set**

Contains: 3/8", 7/16", 1/2", 9/16", 5/8", 11/16", 3/4", 13/16", 7/8", 15/16", 1"
Includes socket rail # SB151611

**No. PL13T 13 Pieces 6 Point
Deep SAE Impact Socket Set**

Contains: 1/2", 9/16", 5/8", 11/16", 3/4", 13/16", 7/8", 15/16", 1", 1 1/16", 1 1/8", 1 3/16", 1 1/4"
Includes socket rail # SB191615

**No. MP6T 6 Pieces 6 Point
Standard Metric Impact Socket Set**

Contains: 13, 14, 15, 16, 17, 18mm
Includes socket rail # SB071607



MP6T

**No. 39062 12 Pieces 6 Point
Standard Metric Impact Socket Set**

Contains: 8, 9, 10, 11, 12, 13, 14, 15, 16, 17, 18, 19mm
Includes socket rail # SB151611

**No. 39014 14 Pieces 6 Point
Standard Metric Impact Socket Set**

Contains: 10, 11, 12, 13, 14, 15, 16, 17, 18, 19, 20, 21, 22, 23mm
Includes socket rail # SB191615

**No. 39023 23 Pieces 6 Point
Standard Metric Impact Socket Set**

Contains: 10, 11, 12, 13, 14, 15, 16, 17, 18, 19, 20, 21, 22, 23, 24, 25, 26, 27, 28, 29, 30, 31, 32mm
Includes 2 socket rails # SB151615

**No. 24510 10 Pieces
Female Torx® Impact Socket Set**

Contains: 1/4" Drive: E4, E5, E6, E7, E8
3/8" Drive: E10, E12, E14, E16
1/2" Drive: E18
Includes socket rail # SB070812



24510



MPD8HT

No. MPD8HT 8 Pieces 6 Point Deep Metric Impact Socket Set

Contains: 8, 9, 10, 11, 13, 14, 17, 19mm

Includes socket rail # SB111609

No. 39260 10 Pieces 6 Point Deep Metric Impact Socket Set

Contains: 13, 14, 15, 16, 17, 18, 19, 20, 21, 22mm

Includes socket rail # SB151611

No. 39214 14 Pieces 6 Point Deep Metric Impact Socket Set

Contains: 10, 11, 12, 13, 14, 15, 16, 17, 18, 19, 20, 21, 22, 23mm

Includes socket rail # SB191615



No. 35810 10 Pieces 6 Point Standard SAE Impact Universal Joint Socket Set

Contains: 7/16", 1/2", 9/16", 5/8", 11/16", 3/4", 13/16", 7/8", 15/16", 1"

Includes socket rail # SB151611



No. 36915 15 Pieces 6 Point Deep Metric Impact Universal Joint Socket Set

Contains: 10, 11, 12, 13, 14, 15, 16, 17, 18, 19, 20, 21, 22, 23, 24mm

Includes socket rail # SB191615



No. 35057 7 Pieces 8 Point Standard SAE Double Square Impact Socket Set

Contains: 3/8", 7/16", 1/2", 9/16", 5/8", 11/16", 3/4"

Includes socket rail # SB091608



No. 35806 6 Pieces Impact Driver Set

Contains: 1/2" square drive impact driver, 5/16" hex bit adapter,
No. 2 Phillips® 1 7/16" long, No. 3 Phillips® 1 7/16" long,
5/16" Slotted 1 7/16" long, 3/8" Slotted 1 7/16" long

In metal case

Ratchet Head with Handle

Chrome Part No.	Black Part No.	Description	Length
4254-55	4254B-55B	Ratchet Head and 19½" Handle	24"
4254-56	—	Ratchet Head and 20" Handle	24½"
4254-57	—	Ratchet Head and 35" Handle	39½"

Federal Spec. U.S. GGG-W-641E. ANSI Spec. B107.10M.



Ratchet Head and Handle

Chrome Part No.	Black Part No.	Description	Length
4254	4254B	Reversible ratchet, 32 tooth (Head Only)	6¼"
4255	4255B	Handle fits 4254 or 4254B	19½"
4256	—	Knurled Grip Bar fits 4254 or 4254B	20"
4257	—	Knurled Grip Bar fits 4254 or 4254B	35"

Federal Spec. U.S. GGG-W-641E. ANSI B107.10M



Drive Head - Chrome

Part No.	Description	Length
86	Drive Head for 4255, 4256, 4257	2¼"

Federal Spec. U.S. GGG-W-641E. ANSI Spec. B107.10M



Flex Handle

Part No.	Description	Length
4288	Knurled Grip Flex Handle, Chrome	21"
4288B	Knurled Grip Flex Handle, Black	21"

Federal Spec. CDA 39-GP-12b U.S. GGG-W-641E. ANSI B107.10M



Extensions - Chrome

Part No.	Description	Length
88S	Extension	4"
88	Extension	8"
87	Extension	15½"



Universal Joint - Chrome

Part No.	Square Male	Square Female	Length
4295	¾"	¾"	3½"

Federal Spec. CDA 39-GP12b U.S. GGG-W-641E
ANSI Spec. B107.10M





Adapters - Chrome

Part No.	Female	Male	Length
4299*	3/4"	1/2"	2"
4298	1/2"	3/4"	1 3/4"
4211*	3/4"	1"	2 1/4"
4213*	1"	3/4"	2 5/8"

Federal Spec. U.S. GGG-W-641E ANSI Spec. B107.10M



Drag Link Socket - Chrome

Part No.	Description	Tip Size	Length
4405	Drag Link Socket	3/16 x 1 3/8"	2 3/16"



Extensions - Black Impact

Part No.	Description	Length
P6-107	Extension	7"
P6-110	Extension	10"
P6-113	Extension	13"



Universal Joint - Black Impact

Part No.	Female	Male	Length
P6-140A*	3/4"	3/4"	4"



Adapters - Impact

Part No.	Female	Male	Length
PA6-4*	3/4"	1/2"	2 3/16"
PA6-7	3/4"	1"	2 1/4"



Adapters - Impact

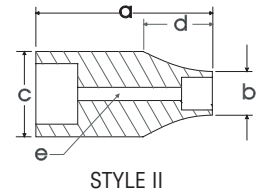
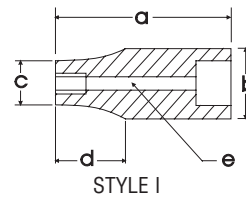
Part No.	Female	Male	Length
PA4-6	1/2"	3/4"	1 7/8"
PA7-6*	1"	3/4"	2 7/8"

* Due to the nature of the product these items are not warranted.

12 Point Standard Length

Hex Size	12 Point Part No.	Overall Length in a	Drive End in b	Hex End in c	Taper Length in d	Bolt Clearance in e	
3/4"	HD24	1.97	1.42	1.18	0.87	0.67	Style I
13/16"	HD26	1.97	1.42	1.22	0.87	0.80	
7/8"	HD28	1.97	1.42	1.28	0.87	0.76	
15/16"	HD30	1.97	1.42	1.38	0.87	0.87	
1"	HD32	2.01	1.50	1.50	—	0.94	
1 1/16"	HD34	2.05	1.57	1.54	0.87	1.05	
1 1/8"	HD36	2.05	1.57	1.57	—	1.19	
1 3/16"	HD38	2.24	1.57	1.65	0.94	—	Style II
1 1/4"	HD40	2.24	1.57	1.73	0.94	—	
1 5/16"	HD42	2.24	1.57	1.81	0.94	—	
1 3/8"	HD44	2.24	1.57	1.89	0.94	—	
1 7/16"	HD46	2.28	1.57	2.01	0.94	—	
1 1/2"	HD48	2.36	1.73	2.05	0.94	—	
1 9/16"	HD50	2.36	1.73	2.13	0.94	—	
1 5/8"	HD52	2.44	1.73	2.20	0.94	—	
1 11/16"	HD54	2.76	1.73	2.28	0.94	—	
1 3/4"	HD56	2.76	1.73	2.36	0.94	—	
1 13/16"	HD58	2.83	1.89	2.44	0.94	—	
1 7/8"	HD60	2.91	1.89	2.52	0.94	—	
1 15/16"	HD62	2.91	1.89	2.60	0.94	—	
2"	HD64	2.91	1.89	2.68	0.94	—	
2 1/16"	HD66	3.07	2.13	2.76	0.94	—	
2 1/8"	HD68	3.27	2.13	2.83	0.94	—	
2 3/16"	HD70	3.39	2.13	2.87	0.94	—	
2 1/4"	HD72	3.39	2.13	2.95	0.94	—	
2 5/16"	HD74	3.39	2.13	3.07	0.94	—	
2 3/8"	HD76	3.54	2.13	3.15	0.94	—	

Federal Spec. CDA 39-GP12b U.S. GGG-W-641E ANSI Spec. B107.5



6 Point Deep Length

Hex Size	6 Point Part No.	Overall Length in a	Drive End in b	Hex End in c	Taper Length in d	Bolt Clearance in e
15/16"	RLH30	3.35	1.42	1.38	1.73	0.92
1"	RLH32	3.35	1.50	1.50	0.94	0.76
1 1/16"	RLH34	3.54	1.57	1.54	1.73	—
1 1/8"	RLH36	3.54	1.57	1.57	1.04	0.84
1 1/4"	RLH40	3.54	1.57	1.73	0.94	1.14
1 5/16"	RLH42	3.54	1.57	1.81	0.94	1.01
1 3/8"	RLH44	3.54	1.57	1.89	0.94	1.05
1 7/16"	RLH46	3.54	1.57	2.01	0.94	—
1 1/2"	RLH48	3.54	1.73	2.05	0.94	1.22
1 5/8"	RLH52	3.54	1.73	2.20	0.94	—

Federal Spec. CDA 39-GP12b U.S. GGG-W-641E ANSI Spec. B107.5



Note: NOT FOR IMPACT USE. All items on this page are for hand use only.

12 Point Standard Length - Chrome Finish



Hex Size	12 Point Part No.	Overall Length mm a	Drive End mm b	Hex End mm c	Taper Length mm d	Bolt Clearance mm e
24mm	M3424	51	36	34	—	—
25mm	M3425	51	35	36	16	—
26mm	M3426	51	36	37	16	—
27mm	M3427	51	36	38	22	—
28mm	M3428	51	36	39	22	—
29mm	M3429	51	38	40	22	—
30mm	M3430	54	38	42	24	—
32mm	M3432	56	38	44	26	—
35mm	M3435	58	42	48	26	—
36mm	M3436	58	42	50	28	—
38mm	M3438	58	45	52	28	—
41mm	M3441	64	45	56	30	—
42mm	M3442	64	45	57	30	—
46mm	M3446	68	47	62	34	—
50mm	M3450	72	48	68	36	—
54mm	M3454	74	48	72	38	—
55mm	M3455	76	48	74	40	—
58mm	M3458	78	48	78	40	—
60mm	M3460	78	48	80	42	—

Federal Spec. CDA 39-GP12b U.S. GGG-W-641E ANSI Spec. B107.5

Note: Not for impact use. Above items are for hand use only.

Axle Nut Sockets



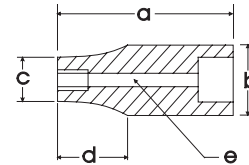
Hex Size	Part No.	Description	Length, in.
2 ³ / ₃₂ "	AN1	6 point	3
2 ¹ / ₄ "	AN2	6 point	3
2 ³ / ₈ "	AN3	6 point	3
2 ¹ / ₂ "	AN4	6 point	3
2 ⁹ / ₁₆ "	AN5	6 point	3
2 ⁵ / ₈ "	AN6	6 point	3
2 ³ / ₄ "	AN7	6 point	3
2 ⁷ / ₈ "	AN8	6 point	3
3"	AN9	6 point	3
3 ¹ / ₄ "	AN10	6 point	3
3 ¹ / ₂ "	AN11	6 point	3
3 ⁷ / ₈ "	AN12	6 point	3
4"	AN13	6 point	3
4 ¹ / ₈ "	AN14	6 point	3
2 ⁹ / ₁₆ "	AN31	8 point	3
3"	AN32	8 point	3
3 ¹ / ₄ "	AN33	8 point	3
3 ⁷ / ₈ "	AN34	8 point	3
4 ⁷ / ₈ "	AN35	8 point	3
2 ³ / ₈ "	AN51*	6 point	3
2 ⁹ / ₁₆ "	AN52*	6 point	3

* Fits special "Rounded" hex nut as found on DANA axles.

**6 Point Standard Length - Impact
Black Industrial Finish**

Hex Size	6 Point Part No.	Overall Length in a	Drive End in b	Hex End in c	Taper Length in d	Bolt Clearance in e
9/16"	P2609	1.97	1.5	1	0.87	0.47
5/8"	P2610	1.97	1.5	1.08	0.87	0.51
11/16"	P2611	1.97	1.5	1.14	0.87	0.59
3/4"	P2612	1.97	1.5	1.18	0.87	0.67
13/16"	P2613	2.05	1.5	1.26	0.87	0.71
7/8"	P2614	2.05	1.5	1.34	0.87	0.79
15/16"	P2615	2.05	1.5	1.42	0.87	0.83
1"	P2632	2.05	1.5	1.57	—	0.91
11/16"	P2634	2.05	1.5	1.57	—	1.02
11/8"	P2636	2.05	1.65	1.65	—	1.02
13/16"	P2638	2.05	1.73	1.73	—	1.1
11/4"	P2640	2.05	1.73	1.73	—	1.18
15/16"	P2642	2.2	1.73	1.85	—	1.22
13/8"	P2644	2.2	1.73	1.97	—	1.3
17/16"	P2646	2.2	1.73	2	—	1.34
11/2"	P2648	2.2	1.73	2.09	—	1.42
19/16"	P2650	2.44	1.73	2.2	—	1.48
15/8"	P2652	2.44	1.73	2.28	—	1.54
111/16"	P2654	2.44	1.73	2.5	—	1.61
13/4"	P2656	2.44	1.73	2.56	—	1.67
113/16"	P2658	2.68	1.73	2.64	—	1.69
17/8"	P2660	2.68	1.73	2.68	—	1.75
15/16"	P2662	2.76	1.73	2.76	—	1.77
2"	P2664	2.83	2.13	1.8	—	1.81
21/16"	P2666	2.83	2.13	2.91	—	1.85
21/8"	P2668	2.83	2.13	3.03	—	1.93
23/16"	P2670	2.91	2.13	3.03	—	1.99
21/4"	P2672	2.91	2.13	3.15	—	1.05
25/16"	P2674	2.95	2.13	3.23	—	2.11
23/8"	P2676	2.95	2.13	3.31	—	2.17

Federal Spec. U.S. GGG-W-660A

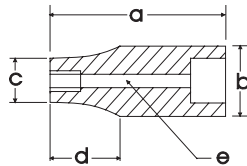


**8 Point Standard Length - Impact
Black Industrial Finish**

Hex Size	8 Point Part No.	Overall Length in a	Drive End in b	Hex End in c	Taper Length in d	Bolt Clearance in e
3/4"	P6-824	2.05	1.6	1.60	—	0.67
13/16"	P6-826	2.05	1.6	1.60	—	0.71
7/8"	P6-828	2.05	1.73	1.76	—	0.79
15/16"	P6-830	2.05	1.73	1.76	—	0.83
1"	P6-832	2.12	1.73	2.00	—	0.91
11/16"	P6-834	2.20	1.73	2.08	—	1.02
11/8"	P6-836	2.27	1.73	2.27	—	1.02
13/16"	P6-838	2.35	1.73	2.36	—	1.1
11/4"	P6-840	2.35	1.73	2.36	—	1.18
15/16"	P6-842	2.43	1.73	2.50	—	1.22

Federal Spec. U.S. GGG-W-660A

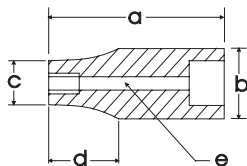




6 Point Deep Length - Impact Black Industrial Finish

Hex Size	6 Point Part No.	Overall Length in a	Drive End in b	Hex End in c	Taper Length in d	Bolt Clearance in e
3/4"	PL2612	3.35	1.5	1.18	1.73	0.67
13/16"	PL2613	3.35	1.5	1.26	1.73	0.71
7/8"	PL2614	3.35	1.5	1.34	1.73	0.79
15/16"	PL2615	3.35	1.5	1.42	1.73	0.83
1"	PL2632	3.35	1.5	1.57	—	0.91
1 1/16"	PL2634	3.35	1.5	1.57	—	1.04
1 1/8"	PL2636	3.35	1.65	1.65	—	1.06
1 3/16"	PL2638	3.35	1.73	1.73	—	1.1
1 1/4"	PL2640	3.35	1.73	1.73	—	1.18
1 5/16"	PL2642	3.35	1.73	1.85	—	1.22
1 3/8"	PL2644	3.35	1.73	1.97	—	1.3
1 7/16"	PL2646	3.35	1.73	2.01	—	1.36
1 1/2"	PL2648	3.74	1.73	2.09	—	1.42
1 9/16"	PL2650	3.74	1.73	2.2	—	1.48
1 5/8"	PL2652	3.74	1.73	2.28	—	1.54
1 11/16"	PL2654	3.74	1.73	2.5	—	1.61
1 3/4"	PL2656	3.74	1.73	2.56	—	1.67
1 13/16"	PL2658	3.74	1.73	2.64	—	1.69
1 7/8"	PL2660	3.74	1.73	2.68	—	1.75
1 15/16"	PL2662	3.74	1.73	2.76	—	1.77
2"	PL2664	3.74	2.13	2.8	—	1.81

Federal Spec. U.S. GGG-W-6660A



6 Point Standard Length - Impact Black Industrial Finish

Hex Size	6 Point Part No.	Overall Length mm a	Drive End mm b	Hex End mm c	Taper Length mm d	Bolt Clearance mm e
24mm	MP3424H	52	38	36	22	22
27mm	MP3427H	52	38	40	—	26
28mm	MP3428H	52	42	42	—	26
30mm	MP3430H	52	44	44	—	28
32mm	MP3432H	52	44	44	—	30
33mm	MP3433H	56	44	47	—	31
34mm	MP3434H	56	44	48	—	32
35mm	MP3435H	56	44	50	—	33
36mm	MP3436H	56	44	51	—	34
38mm	MP3438H	56	44	53	—	36
40mm	MP3440H	62	44	56	—	38
41mm	MP3441H	62	44	58	—	39
42mm	MP3442H	62	44	61	—	40
43mm	MP3443H	63	44	63	—	41
46mm	MP3446H	63	44	67	—	43
50mm	MP3450H	72	54	71	—	45

Lock Ring and Pin

Part No.	Description
PLR34	Locking Ring .140 x 1.687 O/D
PLP34	Locking Pin .185 x 1.45 long



**6 Point Deep Length - Impact
Black Industrial Finish**

Hex Size	6 Point Part No.	Overall Length mm a	Drive End mm b	Hex End mm c	Taper Length mm d	Bolt Clearance mm e
19mm	MPD3419H	85	38	30	44	17
27mm	MPD3427H	85	38	40	—	25
30mm	MPD3430H	85	44	44	—	28
32mm	MPD3432H	85	44	49	—	30
33mm	MPD3433H	85	44	50	—	31
35mm	MPD3435H	85	44	50	—	33
36mm	MPD3436H	85	44	51	—	34
38mm	MPD3438H	95	44	56	—	36
41mm	MPD3441H	95	44	60	—	39
43mm	MPD3443H	95	44	63	—	41



**Standard Length Hex Head Sockets - Impact
Black Industrial Finish**

Hex Size	Part No.	Overall Length, in.	Replacement Bit Part No.	Replacement Bit Length, in.
1/16"	PB2618	4	PB2618-BIT	2
5/8"	PB2620	4	PB2620-BIT	2
3/4"	PB2624	4	PB2624-BIT	2
7/8"	PB2628	4	PB2628-BIT	2
1"	PB2632	4	PB2632-BIT	2



**No. 45805 5 Pieces SAE
Hex Head Socket Set - Impact
Black Industrial Finish**

Contains 1/16", 5/8", 3/4", 7/8", 1"
Includes socket rail # SB112406





No. 45110 10 Pieces 12 Point Standard SAE Socket Set

Contains: 15/16", 1", 1 1/16", 1 1/8", 1 1/4", 1 5/16", 1 3/8",
1 7/16", 1 1/2", 1 5/8"

Includes 2 socket rails # SB112406



No. 45010 10 Pieces 6 Point Standard SAE Impact Socket Set

Contains: 15/16", 1", 1 1/16", 1 1/8", 1 1/4", 1 5/16", 1 3/8",
1 7/16", 1 1/2", 1 5/8"

Includes 2 socket rails # SB112406



No. 45260 10 Pieces 6 Point Deep SAE Impact Socket Set

Contains: 15/16", 1", 1 1/16", 1 1/8", 1 1/4", 1 5/16", 1 3/8",
1 7/16", 1 1/2", 1 5/8"

Includes 2 socket rails # SB112406

**No. HD12 12 Pieces 12 Point
SAE Socket Set**

Contains: 1", 1 1/16", 1 1/8", 1 1/4", 1 3/8", 1 7/16", 1 1/2", 1 5/8"

Includes: Reversible Ratchet Head, Handle, 8" Extension,
Sliding T-Head, Metal Box # 9101

**No. HD15 15 Pieces 12 Point
SAE Socket Set**

Contains: 7/8", 1", 1 1/16", 1 1/8", 1 1/4", 1 3/8", 1 7/16", 1 1/2",
1 5/8", 1 3/4"

Includes: Reversible Ratchet Head, Handle, Sliding T-Head,
8" Extension, Metal Box # 9101

**No. HD21 22 Pieces 12 Point
SAE Socket Set**

Contains: 7/8", 1 5/16", 1", 1 1/16", 1 1/8", 1 3/16", 1 1/4", 1 5/16",
1 3/8", 1 7/16", 1 1/2", 1 5/8", 1 3/4", 1 13/16", 1 7/8", 2"

Includes: Reversible Ratchet Head, Handle, Sliding T-Head,
15 1/2" Extension, 8" Extension, Metal Box # 9119

**No. HD25 26 Pieces 12 Point
SAE Socket Set**

Contains: 7/8", 1 5/16", 1", 1 1/16", 1 1/8", 1 3/16", 1 1/4", 1 5/16",
1 3/8", 1 7/16", 1 1/2", 1 5/8", 1 11/16", 1 3/4", 1 13/16",
1 7/8", 2", 2 3/16"

Includes: Reversible Ratchet Head, Handle, Flex Handle,
Sliding T-Head, 15 1/2" Extension, 8" Extension,
4" Extension, Metal Box # 9119

**No. MHD15 15 Pieces 12 Point
Metric Socket Set**

Contains: 24, 25, 26, 27, 28, 29, 30, 32, 35, 36mm

Includes: Reversible Ratchet Head, Handle, Sliding T-Head,
8" Extension, Tool Box # 9101



HD15



HD25





Reversible Ratchet - Satin Chrome

Part No.	Description	Length
X101	Reversible Ratchet	24"

Federal Spec. U.S. GGG-W-641E ANSI Spec. B107.10M



Flex Handle - Satin Chrome

Part No.	Description	Length
X106	Flex Handle	26"

Federal Spec. U.S. GGG-W-641E ANSI Spec. B107.10M



Sliding T-bar - Satin Chrome

Part No.	Description	Length
X31-32	Sliding T-bar	22"

Federal Spec. U.S. GGG-W-641E ANSI Spec. B107.10M



Extensions - Satin Chrome

Part No.	Description	Length
X8	Extension	8"
X9	Extension	17"

Federal Spec. U.S. GGG-W-641E ANSI Spec. B107.10M



Extension - Black Impact

Part No.	Description	Length
P5406	Extension	7"



Adapters - Chrome

Part No.	Female	Male	Length
4213*	1"	3/4"	2 5/8"
4211*	3/4"	1"	2 1/4"

Federal Spec. U.S. GGG-W-641E ANSI Spec. B107.10M



Universal Joint - Black Impact

Part No.	Female	Male	Length
P7-140A*	1"	1"	4 3/8"



Adapters - Black Impact

Part No.	Female	Male	Length
PA7-6*	1"	3/4"	2 7/8"
PA6-7	3/4"	1"	2 1/4"
PA7-8	1"	1 1/2"	3 1/4"
PA8-7*	1 1/2"	1"	3 1/4"



Budd Wheel Socket - Black Impact

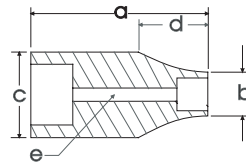
Part No.	Size	Length
P5426S	1 3/16"	2 1/4"

* Due to the nature of the product these items are not warranted.

12 Point Standard Length

Hex Size	12 Point Part No.	Overall Length in a	Drive End in b	Hex End in c	Taper Length in d	Bolt Clearance in e
17/16"	X46	2.50	1.75	2.00	1.00	thru
1 1/2"	X48	2.56	1.75	2.12	1.00	thru
1 5/8"	X52	2.68	1.75	2.25	1.87	thru
1 11/16"	X54	2.75	1.93	2.37	1.87	thru
1 3/4"	X56	2.81	1.93	2.50	1.87	thru
1 13/16"	X58	2.93	1.93	2.56	1.87	thru
1 7/8"	X60	3.00	2.25	2.62	.87	thru
2"	X64	3.00	2.25	2.75	.93	thru
2 1/16"	X66	3.00	2.25	2.84	1.00	thru
2 1/8"	X68	3.00	2.25	2.93	1.12	thru
2 3/16"	X70	3.12	2.25	3.00	1.00	thru
2 1/4"	X72	3.18	2.25	3.12	1.00	thru
2 5/16"	X74	3.25	2.25	3.18	1.50	thru
2 3/8"	X76	3.31	2.25	3.25	1.12	thru
2 7/16"	X78	3.37	2.25	3.31	1.18	thru
2 1/2"	X80	3.50	2.25	3.37	1.25	thru
2 9/16"	X82	3.50	2.25	3.37	1.25	thru
2 5/8"	X84	3.50	2.25	3.50	1.25	thru
2 3/4"	X88	3.68	2.68	3.68	1.25	thru
2 15/16"	X94	3.87	2.68	3.93	1.37	thru
3"	X96	4.00	2.68	4.00	1.37	thru
3 1/8"	X100	4.00	2.68	4.18	1.37	thru
3 1/2"	X112	4.87	2.68	4.75	1.43	thru

Federal Spec. CDA 39-GP-12b U.S. GGG-W 641E ANSI Spec. B107.10M



12 Point Standard Length

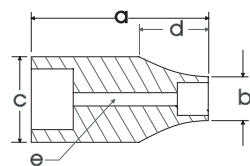
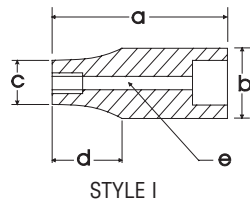
Hex Size	12 Point Part No.	Overall Length mm a	Drive End mm b	Hex End mm c	Taper Length mm d	Bolt Clearance mm e
46mm	MX46	75	49	65	30	thru
50mm	MX50	76	57	70	24	thru
54mm	MX54	76	57	75	29	thru
55mm	MX55	79	57	76	25	thru
60mm	MX60	84	57	83	29	thru
65mm	MX65	89	57	86	32	thru
70mm	MX70	94	68	94	32	thru
75mm	MX75	102	68	102	35	thru

Federal Spec. CDA 39-GP-12b U.S. GGG-W 641E.



Note: NOT FOR IMPACT USE. All items on this page are for hand use only.

6 Point Standard Length - Impact Black Industrial Finish



Hex Size	6 Point Part No.	Overall Length in a	Drive End in b	Hex End in c	Taper Length in d	Bolt Clearance in e
Style I						
3/4"	7-624	2.28	2.01	1.42	0.98	0.67
13/16"	7-626	2.28	2.01	1.5	0.98	0.71
7/8"	7-628	2.28	2.01	1.54	0.98	0.79
15/16"	7-630	2.28	2.01	1.57	0.98	0.83
1"	7-632	2.28	2.01	1.65	0.98	0.91
1 1/16"	7-634	2.28	2.01	1.73	0.98	0.98
1 1/8"	7-636	2.28	2.01	1.81	0.98	1.02
1 3/16"	7-638	2.36	2.01	1.89	0.98	1.1
1 1/4"	7-640	2.36	2.01	2.01	—	1.14
1 5/16"	7-642	2.44	2.05	2.09	—	1.22
1 3/8"	7-644	2.44	2.05	2.13	—	1.38
1 7/16"	7-646	2.44	2.05	2.2	—	1.42
1 1/2"	7-648	2.44	2.05	2.28	—	1.42
1 9/16"	7-650	2.44	2.05	2.36	—	1.48
1 5/8"	7-652	2.99	2.28	3.07	—	1.5
Style II						
1 1/16"	7-654	3.07	2.44	3.31	—	1.5
1 3/4"	7-656	3.07	2.44	3.31	—	1.5
1 13/16"	7-658	3.15	2.44	3.39	—	1.5
1 7/8"	7-660	3.35	2.44	3.46	—	1.5
1 15/16"	7-662	2.67	2.28	2.82	—	1.5
2"	7-664	3.35	2.44	3.62	—	1.5
2 1/16"	7-666	2.76	2.28	2.95	—	1.85
2 1/8"	7-668	2.76	2.28	3.07	—	1.93
2 3/16"	7-670	2.83	2.44	3.15	—	1.99
2 1/4"	7-672	2.95	2.44	3.31	—	2.05
2 5/16"	7-674	2.95	2.44	3.39	—	2.11
2 3/8"	7-676	3.07	2.44	3.43	—	2.17
2 7/16"	7-678	3.07	2.44	3.5	—	2.24
2 1/2"	7-680	3.15	2.44	3.58	—	2.3
2 9/16"	7-682	3.15	2.44	3.66	—	2.36
2 5/8"	7-684	3.23	2.44	3.74	—	2.42
2 11/16"	7-686	3.23	2.44	3.82	—	2.48
2 3/4"	7-688	3.35	2.44	3.86	—	2.56
2 13/16"	7-690	3.43	2.44	3.94	—	2.6
2 7/8"	7-692	3.43	2.44	4.02	—	2.68
2 15/16"	7-694	3.74	3.39	4.09	—	2.76
3"	7-696	3.86	3.39	4.17	—	2.8
3 1/8"	7-6100	3.94	3.39	4.29	—	2.91
3 1/4"	7-6104	3.94	3.39	4.45	—	3.03
3 3/8"	7-6108	3.94	3.39	4.53	—	3.15
3 1/2"	7-6112	4.13	3.39	4.92	—	3.31
3 5/8"	7-6116	4.13	3.39	5	—	3.43
3 7/8"	7-6124	4.13	3.74	5.35	—	3.66
4"	7-6128	4.13	3.74	5.51	—	3.78
4 1/8"	7-6132	4.13	3.74	5.63	—	3.9
4 1/4"	7-6136	4.13	3.74	5.75	—	4.06
4 1/2"	7-6144	4.13	3.74	5.98	—	4.29

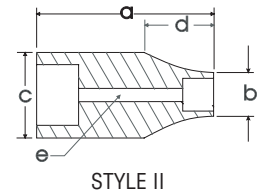
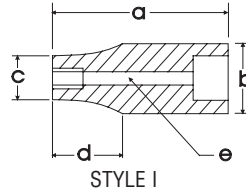
Federal Spec. U.S. GGG-W-660 ANSI Spec. B107.2-1975

**6 Point Deep Length - Impact
Black Industrial Finish**

Hex Size	6 Point Part No.	Overall Length in a	Drive End in b	Hex End in c	Taper Length in d	Bolt Clearance in e
7/8"	17-628	2.33	2.01	1.54	0.85	0.79
15/16"	17-630	3.54	2.01	1.57	1.60	0.87
1"	17-632	3.54	2.01	1.65	1.60	0.91
1 1/16"	17-634	3.54	2.01	1.73	1.60	0.98
1 1/8"	17-636	3.54	2.01	1.81	1.60	1.02
1 3/16"	17-638	3.54	2.01	1.89	1.60	1.1
1 1/4"	17-640	3.54	2.01	2.01	—	1.18
1 5/16"	17-642	3.54	2.05	2.09	—	1.22
1 3/8"	17-644	3.54	2.05	2.13	0.93	1.3
1 7/16"	17-646	3.54	2.05	2.2	0.94	1.42
1 1/2"	17-648	3.62	2.05	2.28	1.05	1.42
1 9/16"	17-650	3.62	2.05	2.36	1.05	1.48
1 5/8"	17-652	3.62	2.05	2.42	1.08	1.54
1 11/16"	17-654	3.62	2.05	2.56	1.08	1.61
1 3/4"	17-656	3.62	2.28	2.6	1.08	1.67
1 13/16"	17-658	3.62	2.28	2.68	1.08	1.69
1 7/8"	17-660	3.62	2.28	2.76	1.08	1.75
1 15/16"	17-662	3.62	2.28	2.83	1.15	1.77
2"	17-664	3.74	2.28	2.91	1.15	1.81
2 1/16"	17-666	3.74	2.28	2.95	1.06	1.85
2 1/8"	17-668	3.94	2.28	3.07	1.06	1.93
2 3/16"	17-670	3.94	2.44	3.15	1.06	1.99
2 1/4"	17-672	3.94	2.44	3.31	1.06	2.05
2 5/16"	17-674	4.13	2.44	3.39	1.08	2.11
2 3/8"	17-676	4.13	2.44	3.43	1.08	2.17
2 7/16"	17-678	4.33	2.44	3.5	1.08	2.24
2 1/2"	17-680	4.33	2.44	3.58	1.08	2.3
2 9/16"	17-682	4.72	2.44	3.66	1.08	2.36
2 5/8"	17-684	4.72	2.44	3.74	1.08	2.42
2 3/4"	17-688	4.88	2.44	3.86	1.20	2.56

Style I

Style II



Federal Spec. U.S. GGG-W-660A ANSI Spec. B107.2-1975

**6 Point Standard Length - Impact
Black Industrial Finish**

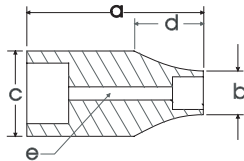
Hex Size	6 Point Part No.	Overall Length mm a	Drive End mm b	Hex End mm c	Taper Length mm d	Bolt Clearance mm e
27mm	XP27H	58	51	44	19	25
30mm	XP30H	60	51	48	19	28
32mm	XP32H	60	51	51	19	30
36mm	XP36H	62	52	56	25	36
41mm	XP41H	62	52	61.5	28	39
46mm	XP46H	64	58	68	29	43
50mm	XP50H	70	58	73	29	45
55mm	XP55H	72	62	79	29	50
60mm	XP60H	78	62	87	29	55
65mm	XP65H	80	62	93	29	60
70mm	XP70H	85	62	98	29	65
75mm	XP75H	98	86	104	29	70

Style I

Style II



Federal Spec. U.S. GGG-W-660A ANSI Spec. B107.2-1975



8 Point Standard Length Double Square - Impact Black Industrial Finish

Size	8 Point Part No.	Overall Length in a	Drive End in b	Hex End in c	Taper Length in d	Bolt Clearance in e
1 ⁵ / ₈ "	7-652S	2.99	2.28	3.07	-	-
1 ¹¹ / ₁₆ "	7-654S	3.07	2.44	3.31	-	-
1 ³ / ₄ "	7-656S	3.07	2.44	3.31	-	-
1 ¹³ / ₁₆ "	7-658S	3.15	2.44	3.39	-	-
1 ⁷ / ₈ "	7-660S	3.35	2.44	3.46	-	-
2"	7-664S	3.35	2.44	3.62	-	-

Federal Spec. U.S. GGG-W-660 ANSI Spec. B107.2-1975



Lock Ring and Pin

Part No.	Description	
PLR100	Locking Ring	.210 x 2.150" O/D
PLP100	Locking Pin	.185 x 1.90" long



No. XH16 15 Pieces 12 Point Standard SAE Socket Set

Contains: 1⁷/₁₆", 1¹/₂", 1⁵/₈", 1¹¹/₁₆", 1¹³/₁₆", 1⁷/₈", 2", 2³/₁₆", 2¹/₄", 2³/₈", 2¹/₂"

Includes: 8" Extension, Sliding "T" Handle, Reversible Ratchet, Metal Box # 9104



No. XH25 24 Pieces 12 Point Standard SAE Socket Set

Contains: 1⁷/₁₆", 1¹/₂", 1⁵/₈", 1¹¹/₁₆", 1¹³/₁₆", 1⁷/₈", 2", 2³/₁₆", 2¹/₄", 2⁵/₁₆", 2³/₈", 2⁷/₁₆", 2¹/₂", 2⁹/₁₆", 2⁵/₈", 2³/₄", 3"

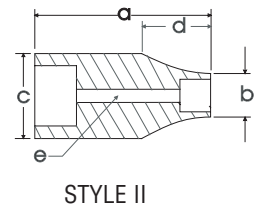
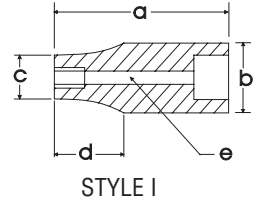
Includes: 8" Extension, 17" Extension, Sliding "T" Handle, Reversible Ratchet, Flex Handle, Adapter 3/4" female 1" male, Metal Box # 9104

**6 Point Standard Length - Impact
Black Industrial Finish**

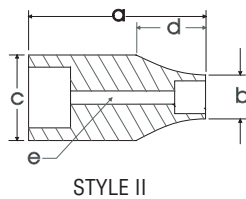
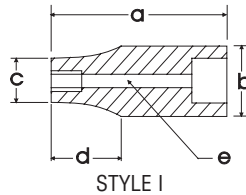
Hex Size	6 Point Part No.	Overall Length in a	Drive End in b	Hex End in c	Taper Length in d	Bolt Clearance in e
15/16"	8-642	3.07	3.39	2.36	1.93	1.22
13/8"	8-644	3.07	3.39	2.44	1.75	1.3
17/16"	8-646	3.07	3.39	2.52	1.65	1.34
1 1/2"	8-648	3.07	3.39	2.6	1.52	1.42
19/16"	8-650	3.07	3.39	2.68	1.38	1.48
19/8"	8-652	3.15	3.39	2.76	1.24	1.54
11 1/16"	8-654	3.15	3.39	2.8	1.17	1.61
13/4"	8-656	3.31	3.39	2.95	0.9	1.67
13 1/16"	8-658	3.31	3.39	2.99	0.83	1.69
17/8"	8-660	3.31	3.39	3.07	0.69	1.75
15 1/16"	8-662	3.43	3.39	3.15	0.55	1.77
2"	8-664	3.43	3.39	3.23	0.42	1.81
2 1/16"	8-666	3.43	3.39	3.27	0.35	1.85
2 1/8"	8-668	3.54	3.39	3.39	—	2.13
23 1/16"	8-670	3.54	3.39	3.39	—	2.13
2 1/4"	8-672	3.62	3.39	3.39	—	2.13
25 1/16"	8-674	3.62	3.39	3.62	—	2.13
23 1/8"	8-676	3.62	3.39	3.66	—	2.17
27 1/16"	8-678	3.74	3.39	3.78	—	2.24
2 1/2"	8-680	3.74	3.39	3.82	—	2.3
29 1/16"	8-682	3.74	3.39	3.82	—	2.36
25 1/8"	8-684	3.94	3.39	4.06	—	2.42
211 1/16"	8-686	3.94	3.39	4.09	—	2.48
23 1/4"	8-688	3.94	3.39	4.13	—	2.56
213 1/16"	8-690	4.06	3.39	4.25	—	2.6
27 1/8"	8-692	4.06	3.39	4.25	—	2.68
215 1/16"	8-694	4.06	3.39	4.33	—	2.76
3"	8-696	4.06	3.39	4.33	—	2.8
31 1/16"	8-698	4.33	3.39	4.53	—	2.85
31 1/8"	8-6100	4.33	3.39	4.57	—	2.91
33 1/16"	8-6102	4.33	3.39	4.92	—	2.99
3 1/4"	8-6104	4.33	3.39	4.92	—	3.05
35 1/16"	8-6106	4.65	3.39	4.92	—	3.11
33 1/8"	8-6108	4.65	3.39	4.92	—	3.17
37 1/16"	8-6110	4.65	3.39	5.04	—	3.23
3 1/2"	8-6112	4.65	3.39	5.12	—	3.31
39 1/16"	8-6114	4.65	3.39	5.12	—	3.37
35 1/8"	8-6116	4.65	3.39	5.12	—	3.43
311 1/16"	8-6118	4.65	3.39	5.12	—	3.48
33 1/4"	8-6120	4.65	3.74	5.39	—	3.54
313 1/16"	8-6122	4.92	3.74	5.51	—	3.62
37 1/8"	8-6124	4.92	3.74	5.51	—	3.68
315 1/16"	8-6126	4.92	3.74	5.51	—	3.74
4"	8-6128	4.92	3.74	5.51	—	3.74
41 1/16"	8-6130	4.92	3.74	5.75	—	3.86
41 1/8"	8-6132	4.92	3.74	5.91	—	3.94
43 1/16"	8-6134	4.92	3.74	5.91	—	3.98
4 1/4"	8-6136	4.92	3.74	5.91	—	4.06
45 1/16"	8-6138	4.92	3.74	6.14	—	4.13
43 1/8"	8-6140	4.92	3.74	6.3	—	4.13
47 1/16"	8-6142	4.92	3.74	6.3	—	4.17
4 1/2"	8-6144	5.31	3.74	6.3	—	4.33
49 1/16"	8-6148	5.31	3.74	6.5	—	4.41
43 1/4"	8-6152	5.31	3.74	6.61	—	4.53

Style I

Style II



Federal Spec. U.S. GGG-W-660A ANSI Spec. B107.2



Lock Ring and Pin

Part No.	Description	
PLR150	Locking Ring	.210 x 3.3" O/D
PLP150	Locking Pin	.250 x 2.90" long

6 Point Deep Length - Impact Black Industrial Finish

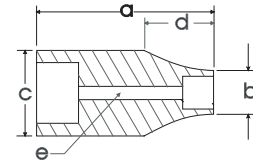
Hex Size	6 Point Part No.	Overall Length in a	Drive End in b	Hex End in c	Taper Length in d	Bolt Clearance in e
Style I						
1 5/16"	8-642L	4.50	3.25	2.37	1.25	1.09
1 3/8"	8-644L	4.53	3.38	2.52	2.4	1.3
1 7/16"	8-646L	4.53	3.38	2.64	2.4	1.38
1 1/2"	8-648L	4.53	3.38	2.68	2.4	1.42
1 9/16"	8-650L	4.53	3.38	2.76	2.4	1.5
1 5/8"	8-652L	4.53	3.38	2.83	2.4	1.54
1 11/16"	8-654L	4.53	3.38	2.91	2.4	1.57
1 3/4"	8-656L	4.53	3.38	2.95	2.4	1.65
1 13/16"	8-658L	4.53	3.38	3.07	2.4	1.69
1 7/8"	8-660L	4.53	3.38	3.15	2.4	1.73
1 15/16"	8-662L	4.53	3.38	3.19	2.4	1.77
2"	8-664L	5.31	3.38	3.27	3.19	1.77
Style II						
2 1/16"	8-666L	5.51	3.38	3.31	3.39	1.85
2 1/8"	8-668L	5.51	3.38	3.39	—	1.93
2 3/16"	8-670L	5.51	3.38	3.46	—	2.01
2 1/4"	8-672L	5.91	3.38	3.54	—	2.05
2 5/16"	8-674L	5.91	3.38	3.62	—	2.13
2 3/8"	8-676L	5.91	3.38	3.7	—	2.17
2 7/16"	8-678L	5.91	3.38	3.78	—	2.24
2 1/2"	8-680L	5.91	3.38	3.86	—	2.28
2 9/16"	8-682L	5.91	3.38	3.94	—	2.36
2 5/8"	8-684L	5.91	3.38	4.02	—	2.4
2 11/16"	8-686L	5.91	3.38	4.09	—	2.48
2 3/4"	8-688L	6.3	3.38	4.17	—	2.56
2 13/16"	8-690L	6.3	3.38	4.25	—	2.6
2 7/8"	8-692L	6.3	3.38	4.29	—	2.68
2 15/16"	8-694L	6.69	3.38	4.49	—	2.76
3"	8-696L	6.69	3.38	4.49	—	2.8
3 1/16"	8-698L	6.69	3.38	4.57	—	2.87
3 1/8"	8-6100L	6.69	3.38	4.65	—	2.93
3 3/16"	8-6102L	6.69	3.38	4.92	—	3
3 1/4"	8-6104L	6.69	3.38	4.92	—	3.05
3 5/16"	8-6106L	6.69	3.38	4.92	—	3.11
3 3/8"	8-6108L	6.69	3.38	4.92	—	3.17
3 7/16"	8-6110L	6.69	3.38	5.04	—	3.23
3 1/2"	8-6112L	6.69	3.38	5.12	—	3.31
3 9/16"	8-6114L	6.69	3.38	5.12	—	3.37
3 5/8"	8-6116L	6.69	3.38	5.12	—	3.43
3 11/16"	8-6118L	6.69	3.38	5.12	—	3.48
3 3/4"	8-6120L	7.09	3.74	5.39	—	3.54
3 13/16"	8-6122L	7.09	3.74	5.51	—	3.62
3 7/8"	8-6124L	7.09	3.74	5.51	—	3.68
3 15/16"	8-6126L	7.48	3.74	5.51	—	3.74
4"	8-6128L	7.48	3.74	5.51	—	3.74
4 1/16"	8-6130L	7.48	3.74	5.75	—	3.86
4 1/8"	8-6132L	7.48	3.74	5.91	—	3.94
4 3/16"	8-6134L	7.48	3.74	5.91	—	3.98
4 1/4"	8-6136L	7.48	3.74	5.91	—	4.06
4 5/16"	8-6138L	7.87	3.74	6.14	—	4.13
4 3/8"	8-6140L	7.87	3.74	6.3	—	4.13
4 1/2"	8-6144L	8.27	3.74	6.3	—	4.33
4 5/8"	8-6148L	8.27	3.74	6.5	—	4.41
4 3/4"	8-6152L	8.27	3.74	6.61	—	4.53

Federal Spec. U.S. GGG-W-660A ANSI Spec. B107.2

**6 Point Standard Length - Impact
Black Industrial Finish**

Hex Size	6 Point Part No.	Overall Length in a	Drive End in b	Hex End in c	Taper Length in d	Bolt Clearance in e
1 3/4"	9-656	4.50	5.00	3.12	1.81	1.37
1 7/8"	9-660	4.50	5.00	3.31	1.81	1.50
2"	9-664	4.75	5.00	3.46	1.81	1.50
2 1/8"	9-668	4.75	5.00	3.59	1.81	1.62
2 1/4"	9-672	4.75	5.00	3.75	1.81	1.75
2 3/8"	9-676	5.00	5.00	3.93	1.81	1.75
2 5/8"	9-684	5.00	5.00	4.25	1.81	1.87
2 3/4"	9-688	5.00	5.00	4.43	1.81	2.00
2 15/16"	9-694	5.00	5.00	4.62	1.81	2.12
3"	9-696	5.25	5.00	4.75	1.81	2.25
3 1/8"	9-6100	5.25	5.00	4.96	1.81	2.25
3 1/4"	9-6104	5.25	5.00	5.06	1.81	2.37
3 3/8"	9-6108	5.25	5.00	5.18	1.81	2.37
3 7/16"	9-6110	5.50	5.00	5.25	1.81	2.50
3 1/2"	9-6112	5.50	5.00	5.37	1.81	2.50
3 5/8"	9-6116	5.75	5.00	5.50	1.81	2.62
3 3/4"	9-6120	5.75	5.00	5.68	1.81	2.75
3 7/8"	9-6124	6.00	5.00	5.68	1.81	2.75
4"	9-6128	6.00	5.00	6.00	1.81	3.00
4 1/8"	9-6132	6.25	5.00	6.12	1.81	3.00
4 1/4"	9-6136	6.50	5.00	6.25	1.81	3.00
4 3/8"	9-6140	6.75	5.00	6.50	1.81	3.25
4 1/2"	9-6144	7.00	5.00	6.62	1.81	3.25
4 5/8"	9-6148	7.00	5.00	6.75	1.81	3.25
4 3/4"	9-6152	7.25	5.00	6.90	1.81	3.50
4 7/8"	9-6156	7.50	5.00	7.00	1.81	3.50
5"	9-6160	7.75	5.00	7.25	1.81	3.50
5 1/8"	9-6164	7.75	5.00	7.43	1.81	3.75
5 1/4"	9-6168	7.75	5.00	7.56	1.81	3.75
5 3/8"	9-6172	7.75	5.00	7.75	1.81	3.75
5 1/2"	9-6176	8.00	5.00	8.00	1.81	4.00
5 5/8"	9-6180	8.00	5.00	8.25	1.81	4.00
5 3/4"	9-6184	8.00	5.00	8.50	1.81	4.00
6 1/8"	9-6196	8.25	5.00	9.00	1.81	4.25
6 1/2"	9-6208	8.50	5.00	9.50	1.81	4.50
6 7/8"	9-6220	8.50	5.00	10.00	1.81	4.75
7 1/4"	9-6232	9.00	5.00	10.50	1.81	5.00
7 5/8"	9-6244	9.00	5.00	11.50	1.81	5.25
8"	9-6256	9.25	5.00	11.50	1.81	5.50

Style II

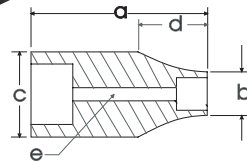


STYLE II

2 1/2" DRIVE



SOCKETS & ATTACHMENTS



STYLE II



6 Point - Deep Length - Impact Black Industrial Finish

Size	6 Point Part No.	Overall Length in a	Drive End in b	Hex End in c	Taper Length in d	Bolt Clearance in e
3 7/16"	9-6110L	7.75	5.00	5.25	.81	2.50
3 1/2"	9-6112L	7.75	5.00	5.37	.81	2.50
3 5/8"	9-6116L	8.00	5.00	5.50	.81	2.62
3 3/4"	9-6120L	8.00	5.00	5.68	.81	2.75
3 7/8"	9-6124L	8.25	5.00	5.90	.81	2.75
4"	9-6128L	8.25	5.00	6.00	.81	3.00
4 1/8"	9-6132L	8.50	5.00	6.12	.81	3.00
4 1/4"	9-6136L	8.75	5.00	6.25	.81	3.00
4 3/8"	9-6140L	8.75	5.00	6.50	.81	3.25
4 1/2"	9-6144L	9.00	5.00	6.62	.81	3.25
4 5/8"	9-6148L	9.00	5.00	6.75	.81	3.25
4 3/4"	9-6152L	9.25	5.00	6.87	.81	3.50
4 7/8"	9-6156L	9.50	5.00	7.00	.81	3.50
5"	9-6160L	9.75	5.00	7.25	.81	3.50

5 Spline Drive - Standard Length - Impact Black Industrial Finish

Hex Size	6 Point Part No.	Overall Length in a	Drive End in b	Spline End in c	Taper Length in d	Bolt Clearance in e
1 1/8"	9-036	3.15	2.37	1.90	.98	.90
1 1/4"	9-040	3.15	2.37	2.00	.98	.93
1 5/16"	9-042	3.15	2.37	2.12	.98	1.06
1 7/16"	9-046	3.15	2.37	2.28	.98	1.09
1 1/2"	9-048	3.15	2.37	2.37	.98	1.17
1 5/8"	9-052	3.15	2.37	2.53	.98	1.21
1 11/16"	9-054	3.15	2.37	2.62	.98	1.29
1 13/16"	9-058	3.15	2.37	2.75	.98	1.37
1 7/8"	9-060	3.15	2.37	2.84	.98	1.40
2"	9-064	3.15	2.37	3.00	.98	1.48
2 1/8"	9-068	3.75	2.37	3.18	.98	1.60
2 3/16"	9-070	3.75	2.37	3.25	.98	1.60
2 1/4"	9-072	3.93	2.37	3.31	.98	1.68
2 5/16"	9-074	3.93	2.37	3.40	.98	1.68
2 3/8"	9-076	3.93	2.37	3.46	.98	1.68
2 9/16"	9-082	4.12	2.37	3.68	.98	1.84
2 3/4"	9-088	4.12	2.37	3.93	.98	2.00

Lock Ring and Pin

Part No.	Description
PLR250	Locking Ring
PLP250	Locking Pin



Ontario's Largest
Pneumatic & Hydraulic Tool Distributor