

RELATED HAND TOOLS



Ontario's Largest
Pneumatic & Hydraulic Tool Distributor

1-2430 Lucknow Drive, Mississauga, Ontario L5S 1V3. Tel: 905-672-5557 Fax: 905-672-5559
Email: sales@dobcoeqp.com www.dobcoeqp.com

Extractors	252
Rethreading & Tapping	254
Deburring Tools	257
Hacksaw	258
Utility Knives	258
Tube & Pipe Cutters	259
Flaring	259
Mirrors & Pick Up Tools	261
Automotive	263
Scrapers & Tape Measure	266
Marking	268
Screwdriver Bits	269
Replacement Parts	270



Straight Type Extractor

Part No.	Screw, stud or bolt size	Use drill size	Min. hole depth	Pipe size
SE50-1	1/4", 5/16"	1/8"	3/8"	—
SE50-2	3/8"	3/16"	1/2"	—
SE50-3	7/16"	15/64"	1/2"	1/8"
SE50-4	1/2", 9/16"	5/16"	1/2"	1/4"
SE50-5	5/8"	3/8"	5/8"	3/8"
SE50-6	3/4"	15/32"	11/16"	—
SE50-7	7/8"	9/16"	11/16"	1/2"
SE50-8	1", 1 1/8"	21/32"	3/4"	1/2"
SE50-9	1 1/4", 1 3/8"	13/16"	3/4"	3/4"



Left-hand Spiral Tapered Flute Extractor

Part No.	Removes screw size	Use drill size
EX1	1/8"-5/32" / 3-4mm	5/64" / 1.8mm
EX2	3/16"-9/32" / 5-7mm	7/64" / 2.6mm
EX3	5/16"-3/8" / 8-10mm	5/32" / 3.7mm
EX4	7/16"-3/8" / 11-14mm	1/4" / 5.5mm
EX5	3/8"-11/16" / 16-18mm	19/64" / 7mm
EX6	5/8"-7/8" / 16-22mm	13/32" / 10mm



No. SE50C 5 Pieces

Straight Type Extractor Set

Contains: SE50-1, SE50-2, SE50-3, SE50-4, SE50-5

No. SE70C 7 Pieces

Straight Type Extractor Set

Contains: SE50-1, SE50-2, SE50-3, SE50-4, SE50-5, SE50-6, SE50-7

Pouch: 100044



No. S35P 5 Pieces

Left Hand Spiral Tapered Flute Extractor Set

Contains: EX1, EX2, EX3, EX4, EX5

Pouch 100068

**No. SE3 3 Pieces
Damaged Screw Remover Set**

Contains: #1 removes #6 & #8 screws, #2 removes #8 & #10 screws, and #3 removes #12 & #14 screws.
Includes Custom Molded Case



Replacement Extractors for SE3

Part No.	Description
SE3-1	#1 removes #6 & #8 screws
SE3-2	#2 removes #8 & #10 screws
SE3-3	#3 removes #12 & #14 screws

**No. SE4 4 Pieces
Drill Out/Bolt Extractor Set**

Contains: 1/4"6mm, 5/16"8mm, 3/8"10mm, 1/2"12mm
Includes Custom Molded Case



Replacement Extractors for SE4

Part No.	Description
SE4-1/4(M6)	1/4"6mm
SE4-5/16(M8)	5/16"8mm
SE4-3/8(M10)	3/8"10mm
SE4-1/2(M12)	1/2"12mm

Stud Removers

Part No.	Description	Length
2591A	1/2" Dr. 1/4" to 5/16"	2"
19	1/2" Dr. 1/4" to 3/4"	2"



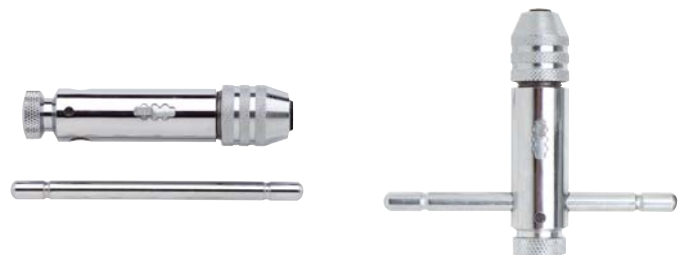
2591A



19

Ratcheting Tap Wrenches - Reversible

Part No.	Overall Length	Capacity (Tap Shanks)
G52/1	3 11/32" (85mm)	.1181"-.3937" (M3-M10)
G52/2	4 11/32" (110mm)	.1968"-.4724" (M5-M12)





Rethreading Kit

Part No.	No. Pieces	Contents
91942	42	Includes 19 taps, 21 dies, of NC, NF and metric sizes, including 2 thread files.

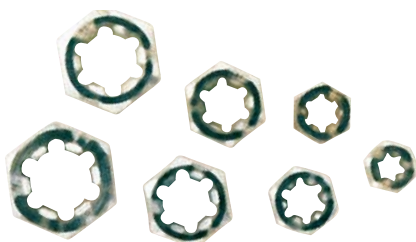
Includes Custom Molded Plastic Case.



Rethreading Kit

Part No.	No. Pieces	Contents
91953	53	Includes 19 taps, 32 dies, of NC, NF and metric sizes, including 2 thread files.

Includes Custom Molded Plastic Case.



Thread Restorer Set - External Type

Part No.	Description
C7TR	NC-USS Coarse: 1/4", 5/16", 3/8", 7/16", 1/2", 9/16", 5/8"
F7TR	NF-SAE Fine: 1/4", 5/16", 3/8", 7/16", 1/2", 9/16", 5/8"



Thread Restorers - External Type

Part No.	Description
TR1T	Threads per inch: 11, 12, 13, 14, 16, 18, 20, 24
TR2T	Threads per inch: 9, 10, 12, 16, 20, 27, 28, 32
TRM1	Threads per mm: .75, 1, 1.25, 1.5, 1.75, 2, 2.5, 3

Rethreading Replacement Parts for 91953 and 91942

SAE Coarse Taps

Part No.	Description
91108	1/4"-20 TPI
91110	5/16"-18 TPI
91112	3/8"-16 TPI
91114	7/16"-14 TPI
91116	1/2"-13 TPI
91118	9/16"-12 TPI



Metric Taps

Part No.	Description
91610	6mm x 1.00mm
91611	8mm x 1.25mm
91612	10mm x 1.25mm
91615	10mm x 1.50mm
91622	12mm x 1.25mm
91625	12mm x 1.50mm
91627	12mm x 1.75mm



SAE Fine Taps

Part No.	Description
91208	1/4"-28 TPI
91210	5/16"-24 TPI
91212	3/8"-24 TPI
91214	7/16"-20 TPI
91216	1/2"-20 TPI
91218	9/16"-18 TPI



Metric Dies

Part No.	Description
91505	6mm x 1.00mm
91506	6mm x 1.25mm
91507	7mm x 1.00mm
91508	8mm x 1.00mm
91509	8mm x 1.25mm
91510	8mm x 1.50mm
91511	10mm x 1.00mm
91512	10mm x 1.25mm
91515	10mm x 1.50mm
91522	12mm x 1.25mm
91525	12mm x 1.50mm
91527	12mm x 1.75mm
91542	14mm x 1.25mm
91545	14mm x 1.50mm
91555	20mm x 1.50mm



SAE Fine Dies

Part No.	Description
91308	1/4"-28 TPI
91310	5/16"-24 TPI
91312	3/8"-24 TPI
91314	7/16"-20 TPI
91316	1/2"-20 TPI
91318	9/16"-18 TPI
91320	5/8"-18 TPI
91324	3/4"-16 TPI
91325	3/4"-20 TPI



SAE Coarse Dies

Part No.	Description
91408	1/4"-20 TPI
91410	5/16"-18 TPI
91412	3/8"-16 TPI
91414	7/16"-14 TPI
91416	1/2"-13 TPI
91418	9/16"-12 TPI
91420	5/8"-11 TPI
91424	3/4"-10 TPI



RETHREADING, TAPPING & DEBURRING



No. 92340 40 Pieces Carbon Tap and Die Set STANDARD

Contains: Carbon tap and die set, NC/NF, with taps and 1" O.D. round dies: 4-40, 6-32, 8-32, 10-24, 10-32, 12-24, 1/4"-20, 1/4"-28, 5/16"-18, 5/16"-24, 3/8"-16, 3/8"-24, 7/16"-14, 7/16"-20, 1/2"-13, 1/2"-20, 1/8"-27 NPT, 1 Die Stock, Screw Pitch Gauge, 2 Tap Wrenches, Screwdriver

Includes Plastic Storage Case



No. 92440 40 Piece Carbon Tap and Die Set METRIC

Contains: Carbon tap and die set, NC/NF, with taps and 1" O.D. round dies: 3 x 0.5, 3 x 0.6, 4 x 0.7, 4 x 0.75, 5 x 0.8, 5 x 0.9, 6 x 0.75, 6 x 1.0, 7 x 0.75, 7 x 1.01, 8 x 1.0, 8 x 1.25, 10 x 1.25, 10 x 1.5, 12 x 1.5, 12 x 1.75, 1/8"-27 NPT, 1 Die Stock, Screw Pitch Gauge, 2 Tap Wrenches and Screwdriver

Includes Plastic Storage Case



No. 2599 18 Piece Combination Tap and Drill Set

Contains: 9 high speed standard hand taps, 6-32 to 1/2" - 13 NC featuring ground threads and 60° thread form with 9 matching high speed jobber drills.

Includes Metal Drill Index (90068)



No. 92129 29 Piece Cobalt High Speed Steel Drill Bit Set

Contains: 1/16" - 1/2" x 64^{ths}, Jobber length 135° split point, Grade: M35 Steel, Spec. DIN1412-ANSI Standard-N

Includes Metal Drill Index 95129

DOBCO
EQUIPMENT LTD

No. SE1410 10 Pieces
Combination Screw Extractor & Drill Set

Contains: 5 cobalt high speed M35 steel jobber drill bits
5/64" - 9/32" and 6 left hand spiral tapered flute
extractors EX1-EX5.
Includes Metal Drill Index 90773



No. DT1000 3 Pieces
Deburring Tool Set

Contains: 2 high speed steel blades (DT-100) in plastic handle.
Ideal for removing burrs and sharp edges on metal and plastic parts,
tubes and fittings.



No. DT2000 3 Pieces
Deburring Tool Set

Contains: 2 high speed steel blades (DT-100) in aluminum handle.
Ideal for removing burrs and sharp edges on metal and plastic parts,
tubes and fittings.



No. DT3000 3 Pieces
Deburring Tool Set w/ Telescoping Blade Holder

Contains: 2 high speed steel blades (DT-100) in aluminum handle.
Ideal for removing burrs and sharp edges on metal and plastic parts,
tubes and fittings.



No. DS-100-5 5 Pieces
Deburring Blade Set

H.S.S. blade ideal for metal and plastic edges, cuts both right and left.
Fits DT1000, DT2000 or DT3000 and most competitors handles.



No. DT-100-5 5 Pieces
Deburring Blade Set

H.S.S. blade ideal for metal and plastic edges, cuts right only.
Fits DT1000, DT2000 or DT3000 and most competitors handles.



No. SR-100-2 2 Pieces
Scriber Blade Set

H.S.S. blade ideal for placing marks on metal and plastic surfaces.
Fits DT1000, DT2000 or DT3000 and most competitors handles.



NEW



Hacksaw

Part No. Description

2682HD

Premium industrial strength hacksaw

- Cuts ferrous and non ferrous metals and other materials.
- Unique 2 step quick blade change action.
- 12" blade is adjustable to 45° and 90°.
- Blade tension lever integrated into handle for quick change of blades.
- Supplied complete with top quality bi-metal HSS 24 tpi blade.
- Flexible high speed teeth welded to top quality alloy steel backing.
- 1/2" wide lacquered blade provides superior cutting efficiency with maximum safety.
- Comfortable fully insulated molded handle.
- Spare blade storage area located in black frame.

NEW



Heavy Duty Utility Knife

Part No. Description

Replacement Blades

206

Heavy Duty Utility Knife

206-KBL (Pkg. 5)

Break-away strip of extra blades

- Handle stores extra blades.
- Easy to remove and install blades.
- Comfort grip handle.
- Includes 3 blades.



206-KBL

NEW



Quick Change Utility Knife with 5 Blades

Part No. Description

Replacement Blades

89925

Quick Change Utility Knife

206-KBL (Pkg. 5)

- Spare blade box in handle conveniently stores up to 5 blades.
- Yellow retract button allows quick and easy blade change.
- String cutting jaw.
- Ergonomic grip handle.
- Includes 5 blades.



Utility Knife

Part No. Description

Replacement Blades

209

Retractable Blade Utility Knife

209-KBL

Includes break-away strip of extra blades

Tube and Pipe Cutters

Part No.	Description	Replacement Blades
84122	Cuts tubing 1/8" to 5/8" O.D.	84100
84130*	Cuts tubing 1/8" to 1 1/8" O.D. with retractable locking reamer	84100
84142*	Cuts tubing 1/4" to 1 5/8" O.D. with retractable locking reamer	84110
84167*	Cuts tubing 1/4" to 2 1/2" O.D. with retractable locking reamer	84110
84172	Cuts steel pipes 1/8" to 2" O.D. T-handle style	84120

Above cutters are designed to cut soft copper and steel brake tubing.

**Includes replacement cutting wheel in handle*



84122



84130



84142

Includes deburring tool.



84167



84172

No. 89657 11 Piece Double Flaring Tool Set w/Tube Cutter

Contains: 7 dies, 3/16", 1/4", 5/16", 3/8", 7/16", 1/2", 5/8" O.D. Tube dia. Tubing, Yoke Assembly, Bar Assembly, Handle and 84130 Tube Cutter. 45° Flare.

Includes Custom Molded Case



Replacement Parts for 89657

Part No.	Tube Dia. O.D.
89657-1	3/16"
89657-2	1/4"
89657-3	5/16"
89657-4	3/8"
89657-5	1/2"
89657-6	7/16"
89657-7	5/8"
89657-BAR	Bar Assembly
89657-YKA	Yoke Assembly

FLARING, MIRRORS & PICK UP TOOLS



No. RF163 8 Piece Double Flaring Tool Set

Contains: 5 dies, 3/16", 1/4", 5/16", 3/8", 1/2" O.D. Tube Dia.,
Yoke assembly, bar assembly & handle. 45° Flare.
Includes Custom Molded Case

Replacement Dies for RF163

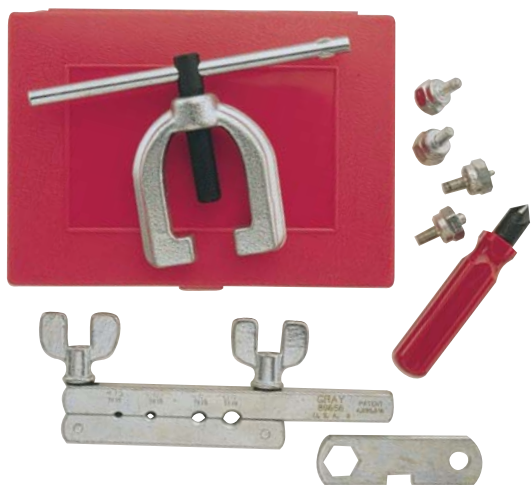
Part No.	Tube Dia. O.D.
RF163-1	3/16"
RF163-2	1/4"
RF163-3	5/16"
RF163-4	3/8"
RF163-5	1/2"



No. RF163-99 8 Piece Double Flaring Tool Set With Tube Cutter

Contains: RF163 and 84130
Includes Custom Molded Case

DOBCO
EQUIPMENT LTD



No. 89656 8 Piece I.S.O. Metric Bubble Flaring Tool Set

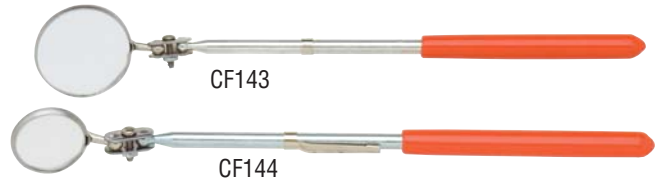
Contains: 4 dies, 4.75mm, 6.0mm, 8.0mm, 10.0mm O.D. Tube Dia.
Yoke assembly, Bar Assembly, Reamer
and Wrench. For automotive brake systems.
Includes Custom Molded Case

Replacement Parts for 89656

Part No.	Tube Dia. O.D.
89656-1	4.75
89656-2	6.0
89656-3	8.0
89656-4	10.0
89656-6	Bar Assembly
89656-7	Yoke Assembly
89656-9	Combination wrench and height gauge

Inspection Mirrors

Part No.	Description	Length
CF143	Pocket Circular, 1¼"	8"
CF144	Pocket Circular with Clip, 7/8"	7½"



Inspection Mirror

Part No.	Description	Length
CF145	Pocket Oval with Clip, 1" x 2"	8½"



Inspection Mirror

Part No.	Description	Length
CF146	Telescopic Circular, 2¼"	10-14"



Inspection Mirror

Part No.	Description	Length
CF147	Telescopic Rectangular, 2½" x 3½"	11¼ to 15¼"
CF147RM	Replacement mirror	



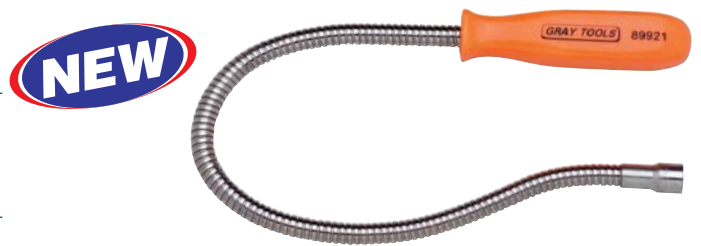
Inspection Mirror

Part No.	Description	Length
89317	Spring controlled inspection mirror 90° movement, 11¼" x 217/32"	16¼"
89317-RM	Replacement mirror	



Flexible Magnetic Pick Up Tool

Part No.	Description	Length
89921	Flexible magnetic pick up tool • Heavy duty magnet holds up to 6.6 lbs. • Locates and retrieves small lost parts from difficult to reach areas.	21"



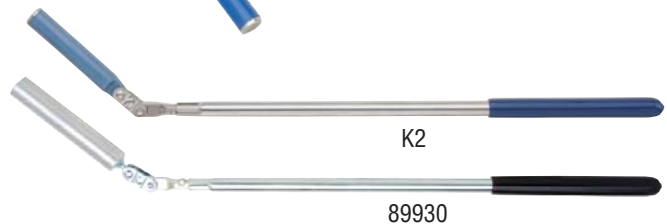
Pickup Tool - Fixed

Part No.	Description	Reach
K1	Magnetic - Fixed	9"



Pickup Tools - Telescopic

Part No.	Description	Reach
K2	Magnetic - Telescopic - lifts 2 lbs.	17 to 26½"
89930	Magnetic - Telescopic - lifts 6½ lbs.	17 to 26½"



PICK UP TOOLS & AUTOMOTIVE



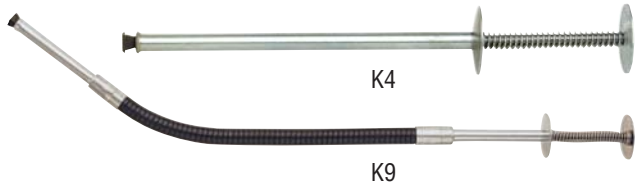
Pickup Tool - Flexible

Part No.	Description	Reach
K3	Magnetic - Flexible	18¼"



Pickup Tool

Part No.	Description	Reach
K5	Magnetic - Telescopic	5¼ to 17¼"



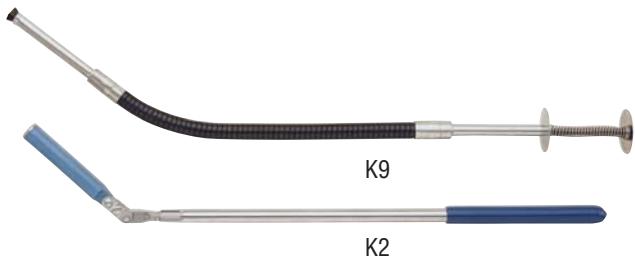
Pickup Tools

Part No.	Description	Reach
K9	Mechanical Fingers - Flexible	15"
K4	Mechanical Fingers - Rigid	6"



Pickup Tool

Part No.	Description	Reach
K906	Magnetic - Pocket-clip	6"



K29 2 Piece Pickup Tool Set

Part No.	Description
K9	Mechanical Fingers - Flexible
K2	Magnetic - Telescopic - lifts 2 lbs

Carded



K2906 2 Piece Pickup Tool Set

Part No.	Description	Reach
K2	Magnetic - Telescopic - lifts 2 lbs	17 to 26½"
K906	Magnetic - Pocket-clip	6"

Carded



Tools sold separately.

Magnetic Rectangular Tray

Part No.	Description
89922	9½" x 5½"



Parts not included.

Magnetic Parts Bowl

Part No.	Description
89923	6" diameter, attaches to any steel surface

Voltage Tester

Part No.	Description
89701	6-12-24 Volt tester 60" cord
89702	Replacement bulb for 6-12-24 Volt tester



Brake-adjusting Tool

Part No.	Description
2564	Brake-adjusting Tool



Nut Breaker

Part No.	Description
170	Capacity: up to 7/16"



Oil Filter Wrench

Part No.	Description
X010	Heavy-duty Filter Wrench



Piston Ring Compressors

Part No.	Description
RC2	Master: 2 1/2" to 5" capacity
RC3	Master: 3 1/2" to 7" capacity
RC4	Truck/Tractor/Diesel: 3 1/2" to 7" capacity



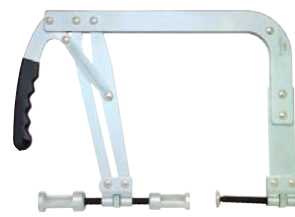
Separators

Part No.	Description	Length	Opening
P317	Tie-rod Ends	11 7/8"	5/8"
P319	Pitman Arm	11 7/8"	1 1/8"
P320	Ball Joint	11 7/8"	1 5/16"



Valve Spring Compressor

Part No.	Description	Capacity
CF11A	10 1/2" high, 9 1/2" wide	7/8" to 2 1/2" springs



Battery Terminal Cleaner

Part No.	Description
BTC2	Post and Terminal Cleaner





Toe Dolly

Part No.	Description	Weight, lbs.
F2	For dinging flat surfaces 4¾" x 2¼" x 1"	2.33

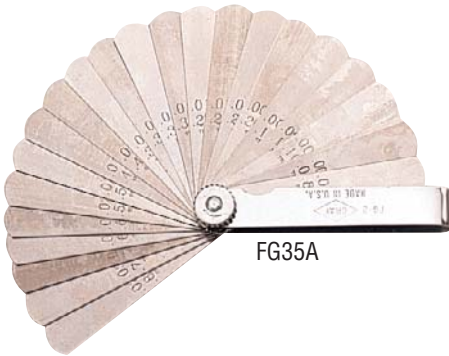


FG1

Feeler Gauges:

General Use - Standard Flat Blades (3" x ½")

Part No.	Description	Thickness, in.
FG1	10-Blade	.002, .003, .004, .005, .006, .007, .008, .010, .012, .015
FG12	15-Blade Intermediate	.002, .003, .004, .005, .006, .007, .008, .010, .011, .012, .013, .014, .015, .020, .025
FG2	25-Blade Master	.0015, .002, .003, .004, .005, .006, .007, .008, .009, .010, .011, .012, .013, .014, .015, .016, .018, .020, .022, .024, .025, .028, .030, .032, .035
FG35A	35-Blade Full Range	.0015, .002, .003, .004, .005, .006, .007, .008, .009, .010, .011, .012, .013, .014, .015, .016, .017, .018, .019, .020, .021, .022, .023, .024, .025, .026, .027, .028, .029, .030, .031, .032, .033, .034, .035



FG35A



FG23



FG15A

Ignition

Part No.	Description	Thickness, in.
FG23	6-Blade Brass Non-magnetic 3" x ½"	.006, .008, .010, .012, .014, .016
FG15A	16-Blade 1¾" x ¼"	.011, .012, .013, .014, .015, .016, .017, .018, .019, .020, .022, .024, .025, .028, .030, .032

Metric Standard - 3" x 1/2"

Part No.	Description	Thickness, mm
FG30	25-Blade	.04, .05, .06, .07, .08, .09, .10, .15,
	Full Range	.20, .25, .30, .35, .40, .45, .50, .55, .60, .65, .70, .75, .80, .85, .90, .95, 1.00



FG30

Ignition & Sparkplug Set 23 Pieces

Part No.	Description	Thickness, in.
FG18	8 Wire	.022, .025, .028, .030, .032, .035,
	90° offset	.038, .040
	15 Ignition	.012, .013, .014, .015, .016, .017,
	Blades	.018, .019, .020, .022, .024, .025,
	(1 3/4" x 1/4")	.028, .030, .032

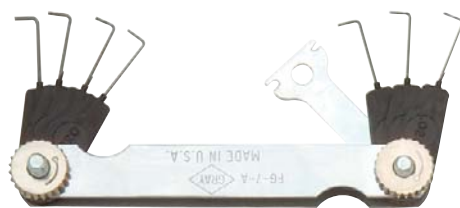
Includes Electrode Bender and Tungsten File



FG18

Spark Plug

Part No.	Description	Thicknesses
FG7A	8 Wire &	.020, .025, .028, .030, .032, .034,
	Electrode	.035, .040 in.
FG4444	Bender	
	Ramp Style	.020 to .100 in. .6 to 2.4 mm



FG7A



FG4444

Specialty

Part No.	Description	Thicknesses
FG9	8-Blade	.002, .003, .004, .005, .006, .008,
	Piston	.010, .015
FG275A	9" x 1/2"	
	26-Blade	.005, .006, .007, .008, .009, .010,
	45° Offset	.011, .012, .013, .014, .015, .016,
	Full Range	.017, .018, .019, .020, .021, .022,
	Extra Length	.023, .024, .025, .026, .027, .028,
4" x 1/2"	.029, .030	



FG9



FG275A

SCRAPERS & TAPE MEASURE



Wire Brush

Part No.	Description	Overall Length
840	Wire Brush	14"



Scriber

Part No.	Description	Reach
K908	Scriber, Carbide Tipped	6"



Scraper

Part No.	Description	Blade Width	Overall Length	Replacement Blades
207	Scraper retractable blade	1½"	5"	208-SBL



Scraper

Part No.	Description	Blade Width	Overall Length
838	Scraper	1¼"	7½"



Scrapers - Screwdriver Handle

Part No.	Description	Blade Width	Overall Length
838A	Scraper	1"	12"
839B	Scraper	1½"	13½"



No. 83839B 2 Piece Scraper Set

Contains: 838 and 839B



Scraper

Part No.	Description	Overall Length
89020	Flexible Wire Carbon Scraper	9"

DOBCO
EQUIPMENT LTD

**No. 86005 5 Pieces
Comfort Grip Scraper Set**

Part No.	Description	Blade Length	Overall Length
86801	Pick 45° Tip	6"	10"
86802	Pick 90° Tip	6"	10"
86803	Pick Hook Tip	6"	10"
86804	Pick Straight Tip	6"	10"
86805	Scraper 1" Blade Tip	6"	10"



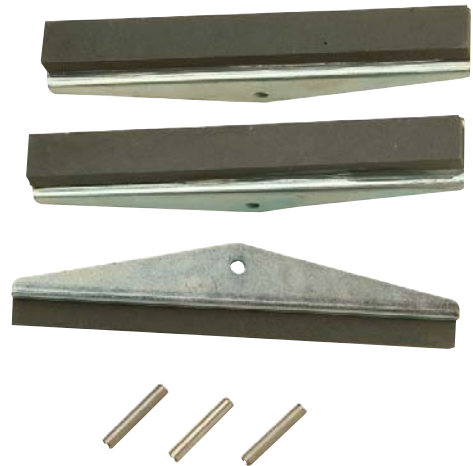
Glaze Breakers - Cylinder Honers

Part No.	Description	Complete with Stones
CF63	¾" to 2½"	1⅞" medium - 220 Grit
CF68	1¼" to 3½"	¾" medium - 220 Grit
CF61	2" to 5½"	3" medium - 220 Grit
CF62CS	2" to 7"	4" medium - 220 Grit



Replacement Stone Sets - 3 pieces per set

Part No.	Overall Length	Grit	Use on
CF63-34	¾"	320/Fine	CF63 and CF68
CF63-1	1⅞"	220/Medium	CF63 and CF68
CF63-14	1⅞"	320/Fine	CF63 and CF68
CF63-24	2"	320/Fine	CF63 and CF68
CF63-21	2"	220/Medium	CF63 and CF68
CF61-14S	3"	320/Fine	CF61
CF61-12S	3"	220/Medium	CF61
CF61-100	3"	100/Coarse	CF61
CF62-14S	4"	320/Fine	CF62
CF62-12S	4"	220/Medium	CF62



26' Measuring Tape with Auto Lock

Part No.	Description
86025	<ul style="list-style-type: none"> • Large 1" (25 mm) wide nylon powder coated blade for superior durability and easy to read graphics. • Auto brake system works at any length and eliminates retraction impact. • Integrated compass rivet on base allows arc lines to be drawn quickly and accurately. • Anti-slip grappling hook can be hung or stuck to any surface / material. • Powerful magnetic tip sticks to metal objects.



MARKING & SCREWDRIVER BITS



Steel Hand Stamps

- For hand held, hammer-struck applications.
- Crowned striking and textured shanks.
- Packed in durable plastic or metal storage containers.
- Letter sets contain 27 pieces - A thru Z, plus ampersand (&).
- Number sets contain 9 pieces - 0 thru 8 (the 6 is used as a 9).

Character Size in.	Square Size	Overall Length	Letter Sets Part No.	Number Sets Part No.	Letter & Number Sets Part No.
1/8	1/4"	2-3/8"	34-20200	34-20541	34-20624
3/16	5/16"	2-3/8"	34-20250	34-20561	34-20625
1/4	3/8"	2-5/8"	34-20300	34-20581	34-20626
3/8	1/2"	2-3/4"	34-20350	34-20601	34-20627
1/2	5/8"	3"	34-20400	34-20621	—



Barricade Tape

Part No.	Description
89800A	Caution 1000 ft 2 mil black on yellow w/cardboard dispenser.
89801A	Caution 1000 ft 2 mil black on yellow.
89802A	Danger 1000 ft 2 mil black on yellow w/cardboard dispenser.
89803A	Danger 1000 ft 2 mil black on yellow.
89804A	Danger 1000 ft 2 mil black on red w/cardboard dispenser.
89805A	Danger 1000 ft 2 mil black on red.

- Bold 2" black characters on bright yellow background.
- Durable .002" thick PVC plastic, 3" by 1,000' long.
- Available with or without dispenser.



Plastic Barricade Tape Dispenser

Part No.	Description
89807	Holds up to 1,000' barricade tape

DOBCO
EQUIPMENT LTD

1/4" HEX SHANK



Slotted



Robertson



Phillips and
Phillips-ACR®



Pozidriv®



Torx®



Hex Bit

SLOTTED	Size	Insert Bits 1" O.A.L.		Power Bits 1-15/16" 3"	
	.032 # 4	76114	76124	76134	76124
.036 # 5	76115	76125	76135	76125	76135
.040 # 6	76116	76126	76136	76126	76136
.046 # 8	76118	76128	76138	76128	76138
.050 #10	76119	76129	76139	76129	76139
.050 #10	—	76120	—	76120	—

ROBERTSON®	Square Size	Insert Bits 1" O.A.L.		Power Bits 2-3/4" 6"	
	# 0	76210	76220	76231	76261
	# 1	76211	76221	76232	76262
	# 2	76212	76222	76233	76263
	# 3	76213	76223	76233	76263

PHILLIPS®	Size	Insert Bits 1" O.A.L.		Power Bits 2-3/4" 6"	
	# 1	76311	76321	76331	76361
	# 2	76312	76322	76332	76362
	# 3	76313	76323	76333	76363
	# 1 Reduced	76391	—	—	—
	# 2 Reduced	76392	—	—	—
	# 1 ACR	—	76421	—	—
	# 2 ACR	76412	76422	—	—
# 3 ACR	—	76423	—	—	

POZIDRIV®	Size	Insert Bits 1" O.A.L.	
	#1	76511	—
	#2	76512	—
	#3	76513	—

TORX®	Size	Insert Bits 1" O.A.L.		Power Bits 1-15/16"	Insert Bits 1" O.A.L.
	T6	77106	—	—	—
	T7	77107	—	—	78107
	T8	77108	—	—	78108
	T9	77109	—	—	78109
	T10	77110	—	—	78110
	T15	77115	—	77215	78115
	T20	77120	—	77220	78120
	T25	77125	—	77225	78125
	T27	77127	—	77227	78127
	T30	77130	77330	77230	78130
	T40	77140	77340	—	78140
	T45	—	77345	—	—
	T50	—	77350	—	—
	T55	—	77355	—	—
	T60	—	TX660-BIT	—	—

HEX	SAE Size	Insert Bits 1" O.A.L.		Metric Size	Insert Bits 1" O.A.L.
	0.050	76610	—	2 mm	76712
	1/16	76612	—	2.5 mm	76712.5
	3/32	76613	—	3 mm	76713
	7/64	76613.5	—	4 mm	76714
	1/8	76614	—	5 mm	76715
	9/64	76614.5	—	6 mm	76716
	5/32	76615	—	7 mm	76717
	3/16	76616	—	8 mm	76718
	7/32	76617	—	—	—



Nut Setter

Nutsetters 1/4" Hex Power Magnetic

Hex Size	1-5/8"	2-9/16"
1/4"	76924	76934
5/16"	76925	76935
3/8"	76926	76936
7/16"	76927	76937



Bit Holders - 1/4" Hex Bits With Ring Retainer

Length	Body Dia.	Magnetic	
3"	7/16"	79103	A
2-1/4"	3/8 - 7/16"	79112	B
2-7/8"	3/8"	79102	A
6"	3/8"	79106	A



Magnetic Bit Holder

Length	Hex	Part No.
8"	1/4"	BH10014

REPLACEMENT PARTS



2 or 3 Combination Yoke



2 Leg Yoke

Yokes

Part No.	Fits Puller Part No.	Legs	Length, in.
999-YOK	999, PO50	2	2"
1001-YOK	999L, 1001	2	3¼"
1002-YOK	1002, 1004	2 or 3	4½"
1003-YOK	1003, 1006	2	6¼"
PO10-YOK	PO10, PO50	3	2"
PO11-YOK	PO11, PO13, PO60	2	4"
PO12-YOK	PO12, PO12L, PO70	2 or 3	6"
PO17-YOK	PO14, PO17	2 or 3	7¾"
P187-YOK	P187	Cross-arm	4"



Pressure Screws

Part No.	Fits Puller Part No.	Length	Thread Size
PO10-SCR	PO10, PO50, 999	4¾"	¾"-24
PO11-SCR	PO60, 1001, PO11, 999L, PO13	7"	9/16"-24
PO12-SCR	1002, 1004, PO12 PO12L, PO70	9"	1 1/16"-18
PO17-SCR	1003, 1006, PO14 PO17	12½"	1 3/16"-16
P187-SCR	P187	5"	5/8"-18



Bolts

Part No.	Fits Puller Part Number
PO10-BLT	999, 1001, PO10, PO11, PO13, 999L, PO50, PO60
PO12-BLT	1002, 1004, PO12, PO12L, PO70
PO17-BLT	1003, 1006, PO14, PO17



Legs

Part No.	Fits Puller Part Number	Length
PO10-LGS	999, PO10, PO50	4"
PO11-LGS	1001, PO11, PO60 Short	4 7/8"
PO12-LGS	1002, PO12, PO70 Short	8 5/8"
PO12L-LGS	1004, PO12L, PO70 Long	10 3/8"
PO13-LGS	999L, PO13, PO60 Long	6 1/2"
PO14-LGS	1003, PO14	12 1/4"
PO17-LGS	1006, PO17	16 1/2"

Links

Part No.	Fits Puller Part Number	Length
P010-LNK	P010, 999	2¼"
P011-LNK	P011, P060, 1001, P013, 999L	2½"
P012-LNK	P012, P070, 1002, 1004, P012L	3¼"
P017-LNK	1003, 1006, P014, P017	5½"



Nuts

Part No.	Fits Puller Part Number
P010-NUT	P050, 999, 999L, 1001, P011, P010, P013, P060
P012-NUT	1002, 1004, P012, P012L, P070
P017-NUT	P014, P017, 1003, 1006

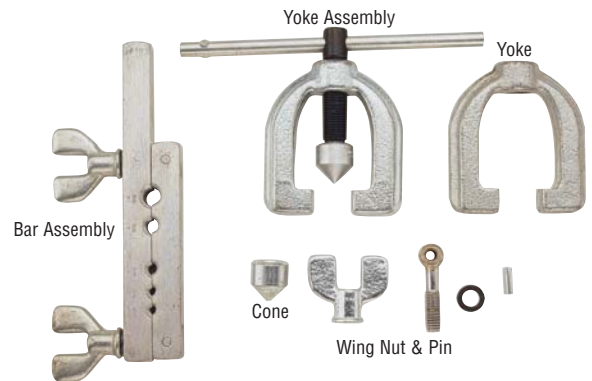


Flaring Tool Repair Parts

Parts for RF163, 89656, 89657

Part No.	Part No.	Part No.	Description
RF163-BAR	89656-BAR	89657-BAR	Bar Assembly
RF163-CON			Cone
RF163-WNP			Wing-nut & Pin
RF163-YKA	89656-YKA	89657-YKA	Yoke Assembly

Note: Replacement parts for the RF Series, 89656 and 89657 flaring tools, use the flaring tool part no. followed by the suffix.
ie: RF163-YOK (Yoke for flaring tool no. RF163)



Ratchet Repair Kits

Kit Part No.	Fits Ratchet Part Number
V25-RK	¼" Drive fits V25, V25B, 10820
T57-RK	⅜" Drive fits T57, T37, T37X
T85-RK	⅜" Drive fits T75, T75B, T76, T77
	⅜" Drive fits T85, T85B, T86, T87
T88-RK	⅜" Drive fits T70, T71, T72
	⅜" Drive fits T88, T81, T82, 20820
S69-RK	⅜" Drive fits S69
5297-RK	½" Drive fits 5297, 5297L, 677, 1597
6297-RK	½" Drive fits 6297, 6297L
6298-RK	½" Drive fits 6298, 6298L, 6298B, 6298LB
8797-RK	½" Drive fits 8797, 8797L, 8797HS, 31820, 1797
8798-RK	½" Drive fits 8798, 8798L, 8798B, 8798LB, 8798F
1969-RK	½" Drive fits 1696
8799F-RK	½" Drive fits 8799F
4254-RK	¾" Drive fits 4254, 4254B

Repair kit consists of nine parts: gear, pawl, ball, spring, shift lever, lever washer & screw and two plate screws



For maximum performance and durability of your ratchet, inspect and lubricate the tool periodically. Use a non clogging or clumping lubricant such as a lithium based oil or spray-on grease.

REPLACEMENT PARTS



Ratchet Repair Kit

Kit Part No. Fits Ratchet Part Number

X101-RK 1" Drive fits X101

Repair kit consists of: Ratchet Head Core and Retaining Ring



Flex Handle Repair Kits

Kit Part No. Fits Flex Handle Part Number

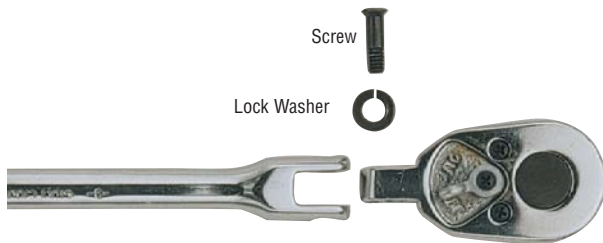
FHRK $\frac{3}{8}$ $\frac{3}{8}$ " Drive fits T30, T30B

FHRK $\frac{1}{2}$ $\frac{1}{2}$ " Drive fits 653, 653L, 653B, 653LB

FHRK $\frac{3}{4}$ $\frac{3}{4}$ " Drive fits 4288, 4288B (**screw & washer only**)

FHRK1 1" Drive fits X106

Repair kit consists of three parts: Head, Screw & Lock Washer.



Flex Head Ratchet Repair Parts

Part No. Description Fits Ratchet Part Number

T30-SCR Screw T37, T37X, T71, T72,

T71-LCW Lock Washer T76, T81, T82, T86, T87

653-SCR Screw 8798F, 677

677-LCW Lock Washer



Adjustable Wrench Repair Kits

Kit Part No. Fits Wrench Kit Part No. Fits Wrench

65104-RK 65104 **65304-RK** 65304

65106-RK 65106 **65306-RK** 65306

65108-RK 65108 **65308-RK** 65308

65110-RK 65110 **65310-RK** 65310

65112-RK 65112 **65312-RK** 65312

65115-RK 65115 **65315-RK** 65315

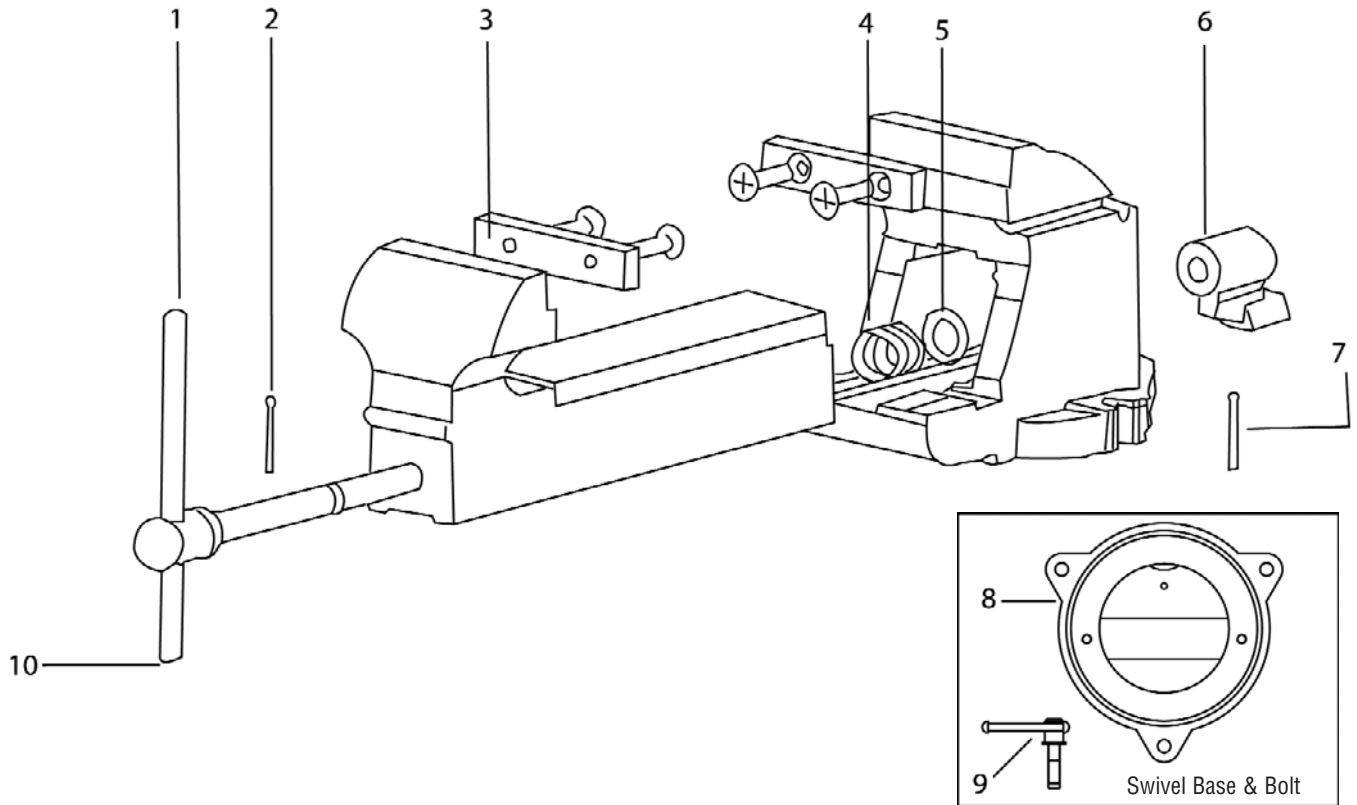
65118-RK 65118 **65318-RK** 65318

65124-RK 65124 **65324-RK** 65324

Repair kit consists of three parts: Pin, Knurl, and Spring.

Note: For jaw replacement, use wrench part number with suffix-JAW. ie: BW6-JAW or 65112-JAW.

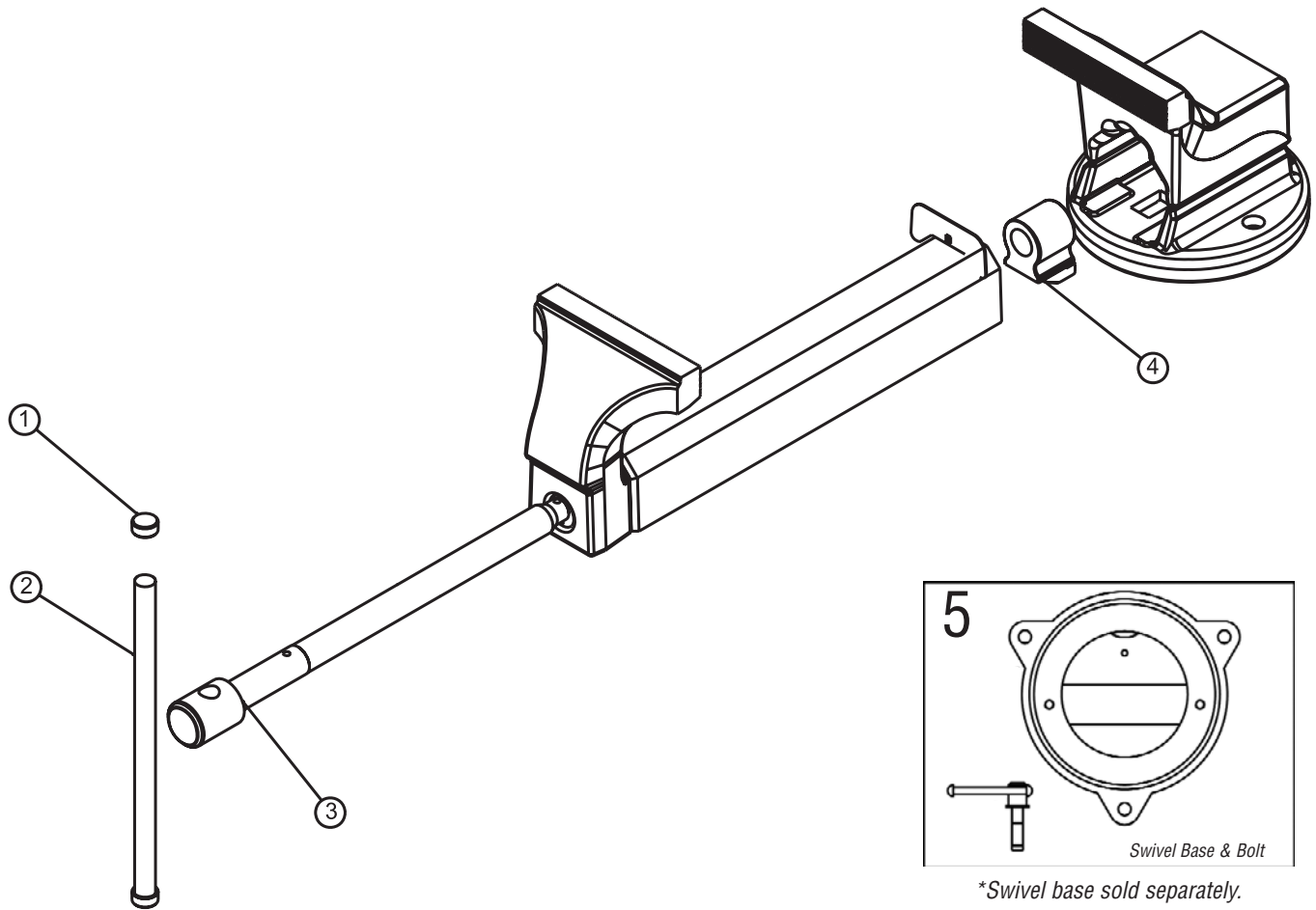
Mechanics' Vise Replacement Parts



*Swivel base not included on all models.

Jaw Width	1 Main Screw Part No.	2 Pin Part No.	3 Jaw Part No.	4 Spring Part No.	5 Washer Part No.	6 Nut Part No.	7 Retaining Pin Part No.	8 Swivel Base Part No.	9 Bolt Part No.	10 Knob Part No.
4"	03-00040-03	05-10860-00	04-00376-01	05-10702-00	05-10371-00	04-00377-00	04-00378-00	SWB3	05-14732-01	04-00366-03
4½"	03-00154-01	05-10860-00	04-00383-01	05-10702-00	05-10371-00	04-00340-00	04-00386-00	SWB4	05-14732-02	04-00366-03
5"	03-00151-02	05-10861-00	04-00391-01	05-10704-00	05-10373-00	04-00341-00	04-00386-00	SWB5	05-14732-02	04-00366-03
6"	03-00152-01	05-10861-00	04-00397-01	05-10704-00	05-10373-00	04-00342-00	04-00386-00	SWB6	05-14732-03	04-00332-00
8"	03-00153-01	05-10861-00	04-00467-01	05-10704-00	05-10373-00	04-00343-00	04-00386-00	SWB6	05-14732-03	04-00332-00

FORGED COMBINATION PIPE VISE Replacement Parts



Vise Part No.	1 Ring Part No.	2 Handle Part No.	3 Main Screw Part No.	4 Nut Part No.	5 Swivel Base Part No.
VS150	VS150-KNOB	VS150-HDL	VS150-SCR	VS150-NUT	VS150-SB
VS200	VS200-KNOB	VS200-HDL	VS200-SCR	VS200-NUT	VS200-SB

Hex Key Overall Length Reference Chart

SAE Extra-Long Arm Hex & Ball

Part No.	Description	OAL (in)
68200XL	X-Long .05"	3.15
68204XL	X-Long 1/16"	3.54
68205XL	X-Long 5/64"	3.94
68206XL	X-Long 3/32"	4.41
68207XL	X-Long 7/64"	4.65
68208XL	X-Long 1/8"	4.96
68209XL	X-Long 9/64"	5.20
68210XL	X-Long 5/32"	5.51
68212XL	X-Long 3/16"	6.30
68214XL	X-Long 7/32"	6.69
68216XL	X-Long 1/4"	7.09
68220XL	X-Long 5/16"	7.87
68224XL	X-Long 3/8"	8.82
68501XL	X-Long Ball .05"	3.15
68504XL	X-Long Ball 1/16"	3.54
68505XL	X-Long Ball 5/64"	3.94
68506XL	X-Long Ball 3/32"	4.41
68507XL	X-Long Ball 7/64"	4.65
68508XL	X-Long Ball 1/8"	4.96
68509XL	X-Long Ball 9/64"	5.20
68510XL	X-Long Ball 5/32"	5.51
68512XL	X-Long Ball 3/16"	6.30
68514XL	X-Long Ball 7/32"	6.69
68516XL	X-Long Ball 1/4"	7.09
68520XL	X-Long Ball 5/16"	7.87
68524XL	X-Long Ball 3/8"	8.82

Metric Extra-Long Arm Hex & Ball

Part No.	Description	OAL (mm)
68415XL	X-Long 1.5mm	90
68402XL	X-Long 2mm	100
68425XL	X-Long 2.5mm	112
68403XL	X-Long 3mm	126
68404XL	X-Long 4mm	140
68405XL	X-Long 5mm	160
68406XL	X-Long 6mm	180
68408XL	X-Long 8mm	200
68410XL	X-Long 10mm	224
68915XL	X-Long Ball 1.5 mm	90
68902XL	X-Long Ball 2mm	100
68925XL	X-Long Ball 2.5mm	112
68903XL	X-Long Ball 3mm	126
68904XL	X-Long Ball 4mm	140
68905XL	X-Long Ball 5mm	160
68906XL	X-Long Ball 6mm	180
68908XL	X-Long Ball 8mm	200
68910XL	X-Long Ball 10mm	224

SAE Long Arm Hex & Ball

Part No.	Description	OAL (in)
68200	Long .05"	2.83
68204	Long 1/16"	3.03
68205	Long 5/64"	3.27
68206	Long 3/32"	3.54
68207	Long 7/64"	3.70
68208	Long 1/8"	3.86
68209	Long 9/64"	4.02
68210	Long 5/32"	4.17
68212	Long 3/16"	4.65
68214	Long 7/32"	5.04
68216	Long 1/4"	5.39
68220	Long 5/16"	6.14
68224	Long 3/8"	6.69
68228	Long 7/16"	7.68
68232	Long 1/2"	8.15
68236	Long 9/16"	9.06
68240	Long 5/8"	9.84
68248	Long 3/4"	11.02
68501	Long Ball .05"	2.83
68504	Long Ball 1/16"	3.03
68505	Long Ball 5/64"	3.27
68506	Long Ball 3/32"	3.54
68507	Long Ball 7/64"	3.70
68508	Long Ball 1/8"	3.86
68509	Long Ball 9/64"	4.02
68510	Long Ball 5/32"	4.17
68512	Long Ball 3/16"	4.65
68514	Long Ball 7/32"	5.04
68516	Long Ball 1/4"	5.39
68520	Long Ball 5/16"	6.14
68524	Long Ball 3/8"	6.69
68528	Long Ball 7/16"	7.68
68532	Long Ball 1/2"	8.15
68536	Long Ball 9/16"	9.06
68540	Long Ball 5/8"	9.84
68548	Long Ball 3/4"	11.02

Metric Long Arm Hex & Ball

Part No.	Description	OAL (mm)
68415	Long 1.5mm	77
68402	Long 2mm	83
68425	Long 2.5mm	90
68403	Long 3mm	98
68404	Long 4mm	106
68405	Long 5mm	118
68406	Long 6mm	137
68408	Long 8mm	156
68410	Long 10mm	170
68411	Long 11mm	195
68412	Long 12mm	207
68414	Long 14mm	230
68417	Long 17mm	250
68419	Long 19mm	280

68915	Long Ball 1.5 mm	77
68902	Long Ball 2mm	83
68925	Long Ball 2.5mm	90
68903	Long Ball 3mm	98
68904	Long Ball 4mm	106
68905	Long Ball 5mm	118
68906	Long Ball 6mm	137
68908	Long Ball 8mm	156
68910	Long Ball 10mm	170
68911	Long Ball 11mm	195
68912	Long Ball 12mm	207
68914	Long Ball 14mm	230
68917	Long Ball 17mm	250
68919	Long Ball 19mm	280

SAE - Short Arm Hex Keys

Part No.	Description	OAL (in)
69100	Short .05"	1.66
69104	Short 1/16"	1.75
69105	Short 5/64"	1.88
69106	Short 3/32"	2.00
69107	Short 7/64"	2.12
69108	Short 1/8"	2.25
69109	Short 9/64"	2.38
69110	Short 5/32"	2.50
69112	Short 3/16"	2.75
69114	Short 7/32"	3.00
69116	Short 1/4"	3.25
69120	Short 5/16"	3.75
69124	Short 3/8"	4.25
69128	Short 7/16"	4.75
69132	Short 1/2"	5.25
69136	Short 9/16"	5.75
69140	Short 5/8"	6.25
69148	Short 3/4"	7.25
69152	Short 7/8"	8.25
69164	Short 1"	9.25

Metric - Short Arm Hex Keys

Part No.	Description	OAL (mm)
69301	Short 1.3mm	41.4
69302	Short 2mm	49.0
69303	Short 3mm	61.5
69304	Short 4mm	68.1
69305	Short 5mm	78.2
69306	Short 6mm	87.9
69307	Short 7mm	92.7
69308	Short 8mm	97.5
69310	Short 10mm	109.0
69312	Short 12mm	121.9
69314	Short 14mm	136.4
69315	Short 1.5mm	43.9
69317	Short 17mm	156.0
69319	Short 19mm	175.5
69325	Short 2.5mm	54.6

SAE Satin Combination Wrenches
Display No. 802000C



SAE Chrome Combination Wrenches
Display No. 802001C



Metric Box End & Flare Nut Combination Wrenches
Display No. 802002C



Metric Satin Combination Wrenches
Display No. 802003C



Metric Chrome Combination Wrenches
Display No. 802004C



SAE Box End Flare Nut Combination Wrenches
Display No. 802005C



Metric Geared Wrenches
Display No. 802006C



SAE Geared Wrenches
Display No. 802007C



SAE Ratcheting Box Wrenches
Display No. 802008C



**1/4" Dr. Ratchets, Attachments
& Sockets**
Display No. 802042C



3/8" Dr. Ratchets & Attachments
Display No. 802009C



1/2" Dr. Ratchets & Attachments
Display No. 802010C



**3/4" Dr. Ratchets &
Attachments**
Display No. 802011C



**3/8" Dr. 6 & 12 Pt.
Metric Chrome Sockets**
Display No. 802012C



**3/8" Dr. 6, 8 & 12 Pt.
SAE Chrome Sockets**
Display No. 802013C



**3/8" Dr. SAE & Metric Hex Head,
Torx® & Phillips® Sockets**
Display No. 802014C



**3/8" Dr. 6 & 12 Pt.
SAE & Metric Impact Sockets**
Display No. 802015C



**1/2" Dr. 12 Pt. SAE
Chrome Sockets**
Display No. 802016C



**1/2" Dr. 6 Pt. SAE
Chrome Sockets
Display No. 802017C**



**1/2" Dr. 6 Pt. Metric
Chrome Sockets
Display No. 802018C**



**1/2" Dr. 6 Pt. SAE
Impact Sockets
Display No. 802019C**



**1/2" 6 Pt. Dr. Metric
Impact Sockets
Display No. 802020C**



**1/2" Dr. SAE & Metric
Hex Head, Torx® & 8 Pt. Sockets
Display No. 802021C**



**3/4" Dr. 6 & 12 Pt. SAE
Chrome Sockets
Display No. 802022C**



**3/4" Dr. Regular Length
Impact Sockets
Display No. 802023C**



**3/4" Dr. 6 & 8 Pt. SAE
Impact Sockets
Display No. 802024C**



**Retaining Ring Pliers
Display No. 802025C**



**Metal Cutting
Snips/Pliers**
Display No. 802026C



Slip Joint Pliers
Display No. 802027C



**Wire Stripping, Crimping
& Cutting Pliers**
Display No. 802028C



Pliers
Display No. 802029C



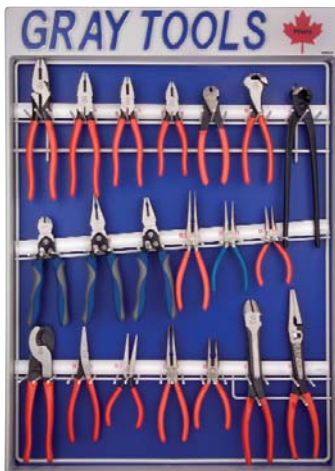
Adjustable Wrenches
Display No. 802030C



**Pipe Wrenches &
Tube Cutters**
Display No. 802031C



Pliers
Display No. 802032C



Retaining Ring Pliers
Display No. 802033C



Screwdrivers & Scrapers
Display No. 802034C



Comfort Grip Screwdrivers
Display No. 802035C



Slotted Screwdrivers
Display No. 802036C



Screwdrivers & Nut Drivers
Display No. 802037C



SAE Shoulder Pattern Eyebolts
Display No. 802038C



Torque Wrenches
Display No. 802039C



Pry Bars
Display No. 802043C



Plain Pattern Eyebolts - Display No. 802041C

Pry Bars
Display No. 802044C



Chisels
Display No. 802045C



Punches
Display No. 802046C



No. 801270
SAE Long Arm Ball UPC S2 Hex Key Wrench Display

Sizes: .050", 1/16", 5/64", 3/32", 7/64", 1/8", 9/64", 5/32", 3/16", 7/32", 1/4", 5/16",
3/8", 7/16", 1/2", 9/16", 5/8", 3/4"

No. 801271
SAE Long Arm UPC S2 Hex Key Wrench Display

Sizes: .050", 1/16", 5/64", 3/32", 7/64", 1/8", 9/64", 5/32", 3/16", 7/32", 1/4", 5/16",
3/8", 7/16", 1/2", 9/16", 5/8", 3/4"

No. 801273
Metric Long Arm Ball UPC S2 Hex Key Wrench Display

Sizes: 1.5, 2, 2.5, 3, 4, 5, 6, 8, 10, 11, 12, 14, 17, 19mm

No. 801272
Metric Long Arm UPC S2 Hex Key Wrench Display

Sizes: 1.5, 2, 2.5, 3, 4, 5, 6, 8, 10, 11, 12, 14, 17, 19mm

No. 801275
SAE Long Arm Bulk S2 Hex Key Wrench Display

Sizes: .050", 1/16", 5/64", 3/32", 7/64", 1/8", 9/64", 5/32", 3/16", 7/32", 1/4", 5/16", 3/8"

No. 801277
SAE Long Arm Ball Bulk S2 Hex Key Wrench Display

Sizes: .050", 1/16", 5/64", 3/32", 7/64", 1/8", 9/64", 5/32", 3/16", 7/32", 1/4", 5/16", 3/8"

No. 801276
Metric Long Arm Bulk S2 Hex Key Wrench Display

Sizes: 1.5, 2, 2.5, 3, 4, 5, 6, 8, 10mm

No. 801278
Metric Long Arm Ball Bulk S2 Hex Key Wrench Display

Sizes: 1.5, 2, 2.5, 3, 4, 5, 6, 8, 10mm

No. 801274
Screw Extractor Display

Contains: EX1, EX2, EX3, EX4, EX5, EX6, SE50-1, SE50-2, SE50-3, SE50-4,
SE50-5, SE50-6, SE50-7, SE50-8, SE50-9



801272



801275



801274

MERCHANDISING



No. 800077 Pry Bar Floor Display

Contains

Part No.	Description	Quantity
C40	24" Pinch Bar	3
C41	30" Pinch Bar	3
C42	38" Pinch Bar	3
C43	42" Pinch Bar	3
C44	48" Pinch Bar	3
C67	24" Pinch Bar - Nickel	3
C68	30" Pinch Bar - Nickel	3
C69	69" Pinch Bar - Nickel	3
C70	42" Pinch Bar - Nickel	3
C71	48" Pinch Bar - Nickel	3
C72	54" Pinch Bar - Nickel	2
73324	24" Erectors Pry Bar	3
73330	30" Erectors Pry Bar	3
73336	36" Erectors Pry Bar	3
73348	48" Erectors Pry Bar	3
WB24	24" Wrecking Bar	2
WB30	30" Wrecking Bar	2
WB36	36" Wrecking Bar	2
WB42	42" Wrecking Bar	2

Floor Display Stand # 810077



Ontario's Largest
Pneumatic & Hydraulic Tool Distributor

1-2430 Lucknow Drive, Mississauga, Ontario L5S 1V3. Tel: 905-672-5557 Fax: 905-672-5559
Email: sales@dobcoeqp.com www.dobcoeqp.com